



**V.10**  
**DECKHARDWARE**  
**PORTLIGHTS & HATCHES**

**RUTGERSON**  
*Best in action*





You might think it started in 1976.  
I would rather say the late 40s or early 50s.

A few nautical miles west of Marstrand there's a small island with a light house called *Pater Noster*. It was built in 1868. Pater Noster is the latin name of the prayer *Our Father* and its origin is much older than the light house itself. In the old days when seamen and fishermen approached Marstrand, they said that prayer in hope of reaching their destination.

Marstrand is a fabulous sailing venue but it can quickly turn dangerous with hard winds, rough seas, a strong current and thousands of treacherous rocks.

This is where I grew up in the 40s and 50s, this is where I learned to both love and fear the sea, this



is where the Rutgerson philosophy was founded; we know what boat fittings must handle during the worst of circumstances and that's why our core values are innovation, performance and reliability.

In 1976 I invented the revolutionary *Super Ring* and founded Rutgerson Marin. I wanted to offer modern, user-friendly and reliable boat fittings to sailors all over the world. Today, after 40 years, these values are still true and we will continue to develop smart and innovative solutions for many years to come.

At Rutgerson we don't compromise about quality. Never have. Never will. You just don't do that if you're born and raised in a place like Marstrand.

**Göran Rutgerson**  
EXECUTIVE DIRECTOR AND OWNER

## CONTENTS

<b>Portlights</b>	<b>4</b>	<b>Deck Hardware</b>	<b>22</b>
Oval Portlights	6	Blocks and wire Blocks	22
Rectangular Portlights	8	Footblocks	33
Elliptical Portlights	10	Rope clutches	34
Round Portlights	12	Deck Fillers	36
Customised portlights	13	Padeyes and stainless steel fittings	37
Accessories	14	Deck organisers	38
<b>Hatches</b>	<b>16</b>	Mainsheet System	40
Classic Hatches	18	Genoa System	46
Master Flush Hatches	20	Self-tacking Jib System	49
Exclusive Flush Hatches	21	General warranty & key terms of supply by Rutgerson Marin AB	51

Portlights

Hatches

Blocks

Rope Clutches

Padeyes &  
Organisers

Mainsheet  
System

Genoa System

Self Tacking  
Jib System



Photo: Courtesy of Bertel Koltthof. [www.seascape18.com](http://www.seascape18.com)



## PORTLIGHTS

Rutgerson portlights are famous for their seamless design as well as extensive range of shapes and sizes. Portlights let light and air into the boat and keep water and moisture out. They also make a strong visual statement about the quality of the craft. The design and construction of Rutgerson portlights fit all kinds of boats, but they are in particular suitable for the high end of the market as they offer great upper class added value.

The Rutgerson portlights are deep drawn in Swedish stainless steel 316L and polished to a high lustre. The seamless construction ensures that the strength and elegant design will last far longer than conventional alternatives.

The tinted acrylic glass is either 10 or 15mm thick and the window area of Rutgerson portlights is in general largest on the market.

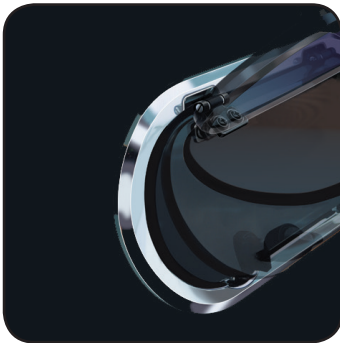
An essential factor is the seal around the opening window and frame. The most common materials used by other brands are cellular rubber or compressible foam, but they tend to disintegrate gradually over the years. These materials are also vulnerable to distortion due to the high pressure on the seal when the portlight is closed. Rutgerson portlights are equipped with a high quality silicone rubber gasket, which is very durable and thus prevents leakage.

The locking mechanism consists of Delrin spiral knobs, designed so that the closing pressure can be varied.

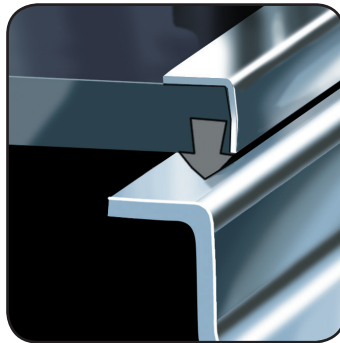
We offer a wide range of inner frames including frames made of stainless steel, which is completely unique. Inner frames are always included and the alternatives are chromed ABS (CH), Off-White ABS (OW) or Stainless Steel (RF).

The portlights are available in oval, rectangular, elliptical and round shapes in both fixed and opening models. All portlights are available in several different depths. They have a simple, fast installation and each product comes with a cut-out template. A range of optional fly screens is also available.

All Rutgerson portlights are CE approved in ocean category A, Area 1.



The hinges are made of polyamide and have a friction function, which enables the glass to stay open in different positions.



The seal is made of silicon rubber, which is the most durable solution and gives the portlight maximum performance. Additionally, the seal is incorporated into the acrylic glass.



The acetal knobs are designed so that the closing pressure can be varied.



## **Portlight shapes**



### **Oval Portlight**

403x204 mm



### **Rectangular Portlight**

370x164 mm

402x195 mm

428x179 mm

700x191 mm



### **Elliptical Portlight**

450x195 mm

485x225 mm



### **Round Portlight**

250 mm



## Oval Portlights



Stainless steel reinforcement



Opening



Fixed

### Oval Portlight 403 x 204 mm

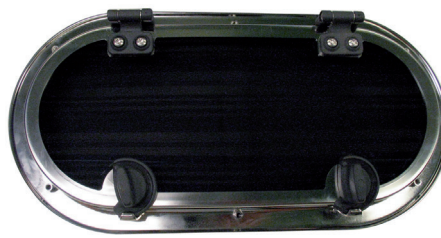
Part no	Glass	Type	Function	Inner frame	Rec. hull thickness [mm]	Depth [mm]	Weight [gr]	Glass Thickness [mm]
A1120-200RF	Tinted	SS reinforcement	Opening	Stainless steel	8 - 14	14	1910	10
A1120-200CH	Tinted	SS reinforcement	Opening	Chrome	8 - 33	14	1990	10
A1120-200OW	Tinted	SS reinforcement	Opening	Off-white	8 - 33	14	1990	10
A1130-200RF	Tinted	SS reinforcement	Opening	Stainless steel	15 - 27	27	2050	10
A1130-200CH	Tinted	SS reinforcement	Opening	Chrome	27 - 46	27	2130	10
A1130-200OW	Tinted	SS reinforcement	Opening	Off-white	27 - 46	27	2130	10
A1150-200RF	Tinted	SS reinforcement	Opening	Stainless steel	28 - 47	47	2150	10
A1150-200CH	Tinted	SS reinforcement	Opening	Chrome	47 - 66	47	2060	10
A1150-200OW	Tinted	SS reinforcement	Opening	Off-white	47 - 66	47	2060	10

Part no	Glass	Type	Function	Inner frame	Rec. hull thickness [mm]	Depth [mm]	Weight [gr]	Glass Thickness [mm]
A1320-200RF	Tinted	Regular	Opening	Stainless steel	8 - 14	14	1640	15
A1320-200CH	Tinted	Regular	Opening	Chrome	8 - 33	14	1710	15
A1320-200OW	Tinted	Regular	Opening	Off-white	8 - 33	14	1710	15
A1330-200RF	Tinted	Regular	Opening	Stainless steel	15 - 27	27	1780	15
A1330-200CH	Tinted	Regular	Opening	Chrome	27 - 46	27	1860	15
A1330-200OW	Tinted	Regular	Opening	Off-white	27 - 46	27	1860	15
A1350-200RF	Tinted	Regular	Opening	Stainless steel	28 - 47	47	1990	15
A1350-200CH	Tinted	Regular	Opening	Chrome	47 - 66	47	2060	15
A1350-200OW	Tinted	Regular	Opening	Off-white	47 - 66	47	2060	15
A1125-200RF	Tinted	Regular	Fixed	Stainless steel	8 - 14	14	1340	10
A1125-200OW	Tinted	Regular	Fixed	Off-white	8 - 33	14	1500	10
A1135-200RF	Tinted	Regular	Fixed	Stainless steel	15 - 27	27	1450	10
A1135-200OW	Tinted	Regular	Fixed	Off-white	27 - 46	27	1600	10
A1155-200RF	Tinted	Regular	Fixed	Stainless steel	28 - 47	47	1660	10
A1155-200OW	Tinted	Regular	Fixed	Off-white	47 - 66	47	1800	10

Engine room ventilation			Air inlet area				
A1495-200			26000 mm3	8 - 70		1670	

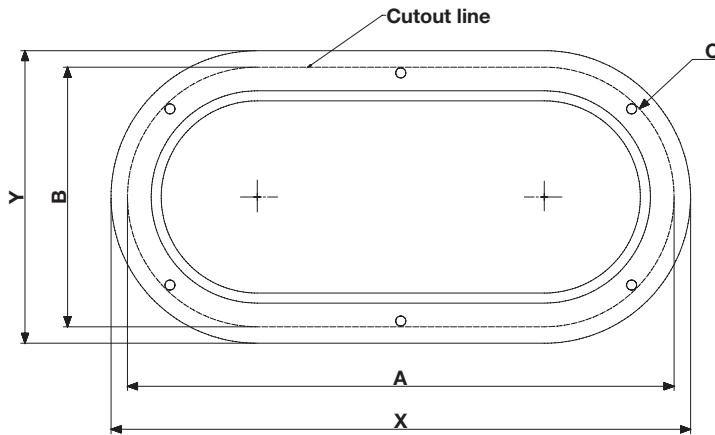


Engine room ventilation



Stainless steel reinforcement means that there is a frame on the inside of the acrylic glass that increases the rigidity of the portlight. It also gives the portlight a high-class impression when viewed from the inside.





## Oval Portlight dimension guide

Outer dimensions [mm]	Cut-out dimensions [mm]		
X x Y	A	B	C Radius
403 x 204	381	181	91



Photo: Courtesy of Viknes Boats



## Rectangular Portlights



Stainless steel reinforcement



Opening



Fixed

### Rectangular Portlight 402 x 195 mm

Part no	Glass	Type	Function	Inner frame	Rec. hull thickness [mm]	Depth [mm]	Weight [gr]	Glass Thickness [mm]
A2120-200CH	Tinted	SS reinforcement	Opening	Chrome	8 - 43	14	1810	10
A2120-200OW	Tinted	SS reinforcement	Opening	Off-white	8 - 43	14	1810	10
A2130-200CH	Tinted	SS reinforcement	Opening	Chrome	26 - 55	26	2040	10
A2130-200OW	Tinted	SS reinforcement	Opening	Off-white	26 - 55	26	2040	10

Part no	Glass	Type	Function	Inner frame	Rec. hull thickness [mm]	Depth [mm]	Weight [gr]	Glass Thickness [mm]
A2320-200CH	Tinted	Regular	Opening	Chrome	8 - 43	14	1600	15
A2320-200OW	Tinted	Regular	Opening	Off-white	8 - 43	14	1600	15
A2330-200CH	Tinted	Regular	Opening	Chrome	26 - 55	26	1740	15
A2330-200OW	Tinted	Regular	Opening	Off-white	26 - 55	26	1740	15
A2125-200CH	Tinted	Regular	Fixed	Chrome	8 - 43	14	1940	10
A2125-200OW	Tinted	Regular	Fixed	Off-white	8 - 43	14	1940	10
A2135-200CH	Tinted	Regular	Fixed	Chrome	26 - 55	26	1990	10
A2135-200OW	Tinted	Regular	Fixed	Off-white	26 - 55	26	1990	10



Opening

### Rectangular Portlight 428 x 179 mm

Part no	Glass	Type	Function	Inner frame	Rec. hull thickness [mm]	Depth [mm]	Weight [gr]	Glass Thickness [mm]
A2320-180CH	Tinted	Regular	Opening	Chrome	8 - 43	14	1650	10
A2320-180OW	Tinted	Regular	Opening	Off-white	8 - 43	14	1650	10
A2330-180CH	Tinted	Regular	Opening	Chrome	26 - 55	26	1650	10
A2330-180OW	Tinted	Regular	Opening	Off-white	26 - 55	26	1650	10



Opening

### Rectangular Portlight 700 x 191 mm

Part no	Glass	Type	Function	Inner frame	Rec. hull thickness [mm]	Depth [mm]	Weight [gr]	Glass Thickness [mm]
A2320-190CH	Tinted	Regular	Opening	Chrome	8 - 43	14	2250	10
A2320-190OW	Tinted	Regular	Opening	Off-white	8 - 43	14	2250	10





Opening

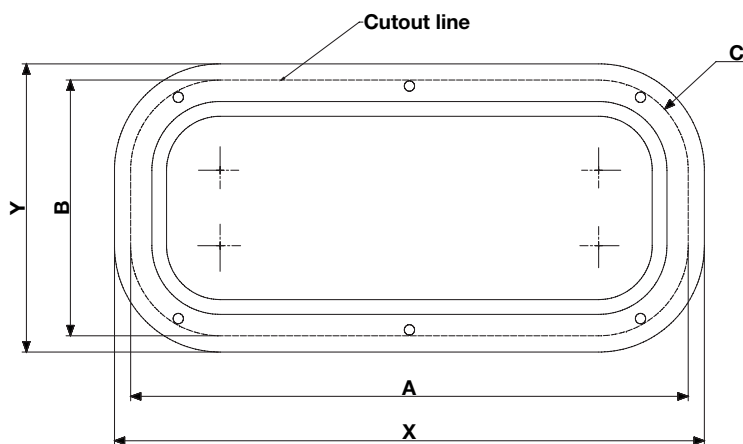


Fixed

## Rectangular Portlight 370 x 164 mm

Part no	Glass	Type	Function	Inner frame	Rec. hull thickness [mm]	Depth [mm]	Weight [gr]	Glass Thickness [mm]
A2320-170RF	Tinted	Regular	Opening	Stainless steel	8 - 20	14	1530	15
A2320-170OW	Tinted	Regular	Opening	Off-white	8 - 46	14	1580	15
A2340-170RF	Tinted	Regular	Opening	Stainless steel	21 - 40	40	1790	15
A2340-170OW	Tinted	Regular	Opening	Off-white	21 - 66	40	1750	15
A2125-170RF	Tinted	Regular	Fixed	Stainless steel	8 - 20	14	1010	10
A2125-170OW	Tinted	Regular	Fixed	Off-white	8 - 43	14	1200	10
A2145-170RF	Tinted	Regular	Fixed	Stainless steel	21 - 40	40	1380	10
A2145-170OW	Tinted	Regular	Fixed	Off-white	28 - 66	40	1450	10

## Rectangular cutout



## Rectangular Portlight dimension guide

Outer dimensions [mm]	Cut-out dimensions [mm]		
X x Y	A	B	C Radius
370 x 164	347	142	61
402 x 195	380	173	61
428 x 179	406	157	61
700 x 191	678	169	61



Photo: Courtesy of Chantier Catana

## Elliptical Portlights 450 x 195 mm



Stainless steel reinforcement



Opening



Fixed

### Elliptical Portlight 450 x 195 mm

Part no	Glass	Type	Function	Inner frame	Rec. hull thickness [mm]	Depth [mm]	Weight [gr]	Glass Thickness [mm]
A3120-190RF	Tinted	SS reinforcement	Opening	Stainless steel	8 - 15	15	1850	10
A3120-190CH	Tinted	SS reinforcement	Opening	Chrome	8 - 32	15	1750	10
A3120-190OW	Tinted	SS reinforcement	Opening	Off-white	8 - 32	15	1750	10
A3130-190RF	Tinted	SS reinforcement	Opening	Stainless steel	16 - 27	27	2060	10
A3130-190CH	Tinted	SS reinforcement	Opening	Chrome	27 - 44	27	1950	10
A3130-190OW	Tinted	SS reinforcement	Opening	Off-white	27 - 44	27	1950	10

Part no	Glass	Type	Function	Inner frame	Rec. hull thickness [mm]	Depth [mm]	Weight [gr]	Glass Thickness [mm]
A3320-190RF	Tinted	Regular	Opening	Stainless steel	8 - 15	15	1600	15
A3320-190CH	Tinted	Regular	Opening	Chrome	8 - 32	15	1500	15
A3320-190OW	Tinted	Regular	Opening	Off-white	8 - 32	15	1500	15
A3330-190RF	Tinted	Regular	Opening	Stainless steel	16 - 27	27	1800	15
A3330-190CH	Tinted	Regular	Opening	Chrome	27 - 44	27	1700	15
A3330-190OW	Tinted	Regular	Opening	Off-white	27 - 44	27	1700	15
A3125-190RF	Tinted	Regular	Fixed	Stainless steel	8 - 15	15	1350	10
A3125-190OW	Tinted	Regular	Fixed	Off-white	8 - 32	15	1500	10
A3135-190RF	Tinted	Regular	Fixed	Stainless steel	16 - 27	27	1470	10
A3135-190OW	Tinted	Regular	Fixed	Off-white	27 - 44	27	1750	10

Engine room ventilation			Air inlet area				
A3495-190			21 000 mm <sup>3</sup>	8 - 70		1670	



Engine room ventilation



Photo: Courtesy of Elan Boats



## Elliptical Portlights 485 x 225 mm



Stainless steel reinforcement



Opening



Fixed

### Elliptical Portlight 485 x 225 mm

Part no	Glass	Type	Function	Inner frame	Rec. hull thickness [mm]	Depth [mm]	Weight [gr]	Glass Thickness [mm]
A3130-220RF	Tinted	SS reinforcement	Opening	Stainless steel	8 - 27	27	2250	10
A3130-220CH	Tinted	SS reinforcement	Opening	Chrome	8 - 54	27	2250	10
A3130-220OW	Tinted	SS reinforcement	Opening	Off-white	8 - 54	27	2250	10
A3150-220RF	Tinted	SS reinforcement	Opening	Stainless steel	28 - 47	47	2500	10
A3150-220CH	Tinted	SS reinforcement	Opening	Chrome	47 - 67	47	2290	10
A3150-220OW	Tinted	SS reinforcement	Opening	Off-white	47 - 67	47	2290	10

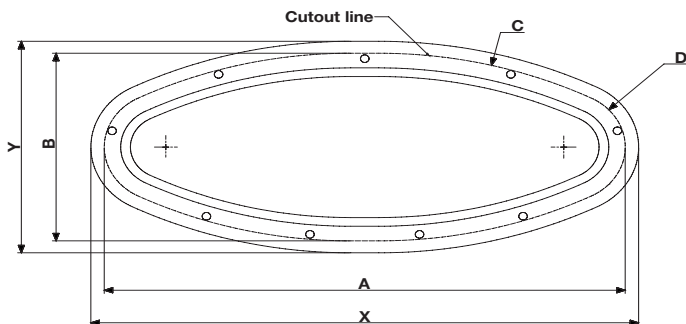
Part no	Glass	Type	Function	Inner frame	Rec. hull thickness [mm]	Depth [mm]	Weight [gr]	Glass Thickness [mm]
A3330-220RF	Tinted	Regular	Opening	Stainless steel	8 - 27	27	1950	15
A3330-220CH	Tinted	Regular	Opening	Chrome	8 - 54	27	1950	15
A3330-220OW	Tinted	Regular	Opening	Off-white	8 - 54	27	1950	15
A3350-220RF	Tinted	Regular	Opening	Stainless steel	28 - 47	47	2050	15
A3350-220CH	Tinted	Regular	Opening	Chrome	47 - 67	47	2050	15
A3350-220OW	Tinted	Regular	Opening	Off-white	47 - 67	47	2050	15
A3135-220RF	Tinted	Regular	Fixed	Stainless steel	8 - 15	27	1700	10
A3155-220RF	Tinted	Regular	Fixed	Stainless steel	28 - 47	47	1850	10

Engine room ventilation				Air inlet area				
A3395-220				27 500 mm3	8 - 70		2100	



Engine room ventilation

### Elliptical cutout



#### Elliptical Portlight dimension guide

Outer dimensions [mm]	Cut-out dimensions [mm]			
X x Y	A	B	C Radius	D Radius
450 x 195	428	173	389	51
485 x 225	467	205	390	48

## Round Portlights

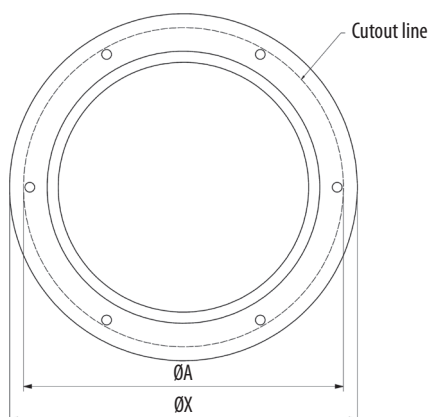


Opening

### Round Portlight 250 mm

Part no	Glass	Type	Function	Inner frame	Rec. hull thickness [mm]	Depth [mm]	Weight [gr]	Glass Thickness [mm]
A4320-250OW	Tinted	Regular	Opening	Off-white	8 - 33	20	2120	15
A4330-250OW	Tinted	Regular	Opening	Off-white	27 - 46	30	2320	15

### Round cutout



### Round Portlight dimension guide

Outer dimensions [mm]	Cut-out dimensions [mm]
X	A
250	230



Photo: Courtesy of Hanse Yacht



## Customised Portlights

Due to our flexible production facilities and knowledgeable staff, there are endless possibilities for customised portlights. Through the years we have produced numerous unique models for boats such as Moody 41, Elan, Storebro and many more (see pictures). It is possible to change shape, colour of the glass, colour of the stainless steel frame or innerframe and constructional alternatives such as the opening mechanism or hinges. We would be happy to discuss any ideas that our customers might have concerning new designs.



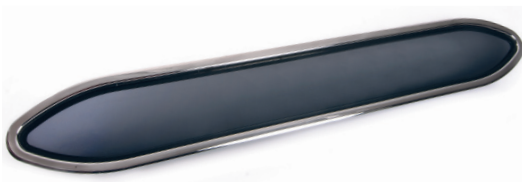
Made for Moody - Germany



Made for Paragon - Sweden



Made for Elan - Slovenia



Made for Moody - Germany



Made for Yamarin - Finland



Made for Elan - Slovenia

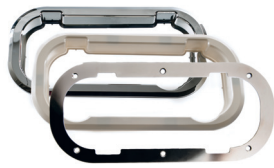


Made for Bella boats - Finland

## Accessories Portlights



Oval



Rectangular



Elliptical



Round

### Inner frames

Part no	Product description	Function	Inner frame	Size [mm]
A1480-20RF	Oval portlight	Opening	Stainless steel	403 x 204
A1480-20CH	Oval portlight	Opening	Chrome	403 x 204
A1480-20OW	Oval portlight	Opening	Off-white	403 x 204
A1485-20RF	Oval portlight	Fixed	Stainless steel	403 x 204
A1485-20OW	Oval portlight	Fixed	Off-white	403 x 204
A2480-17OW	Rectangular portlight	Opening	Off-white	370 x 164
A2480-17RF	Rectangular portlight	Opening	Stainless steel	370 x 164
A2485-17OW	Rectangular portlight	Fixed	Off-white	370 x 164
A2485-17RF	Rectangular portlight	Fixed	Stainless steel	370 x 164
A2480-18CH	Rectangular portlight	Opening	Chrome	428 x 179
A2480-18OW	Rectangular portlight	Opening	Off-white	428 x 179
A2480-19CH	Rectangular portlight	Opening	Chrome	700 x 191
A2480-19OW	Rectangular portlight	Opening	Off-white	700 x 191
A2480-20CH	Rectangular portlight	Opening	Chrome	402 x 195
A2480-20OW	Rectangular portlight	Opening	Off-white	402 x 195
A2485-20CH	Rectangular portlight	Fixed	Chrome	402 x 195
A2485-20OW	Rectangular portlight	Fixed	Off-white	402 x 195
A3480-19RF	Elliptical portlight	Opening	Stainless steel	450 x 195
A3480-19CH	Elliptical portlight	Opening	Chrome	450 x 195
A3480-19OW	Elliptical portlight	Opening	Off-white	450 x 195
A3480-22RF	Elliptical portlight	Opening	Stainless steel	485 x 225
A3480-22CH	Elliptical portlight	Opening	Chrome	485 x 225
A3480-22OW	Elliptical portlight	Opening	Off-white	485 x 225
A3485-19RF	Elliptical portlight	Fixed	Stainless steel	450 x 195
A3485-19OW	Elliptical portlight	Fixed	Off-white	450 x 195
A3485-22RF	Elliptical portlight	Fixed	Stainless steel	485 x 225
A4480-25OW	Round portlight	Opening	Off-white	250



A3999-199  
A3999-299



A1999-209



A2999-189



A2999-169  
A2999-179  
A2999-199

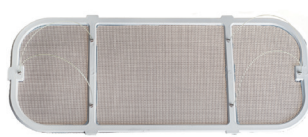
### Aluminium Templates

Part no	Product description	Size [mm]
A1999-209	Template Oval Portlight	403 x 204
A2999-169	Template Rectangular Portlight	370 x 164
A2999-179	Template Rectangular Portlight	428 x 179
A2999-189	Template Rectangular Portlight	700 x 191
A2999-199	Template Rectangular Portlight	402 x 195
A3999-199	Template Elliptical Portlight	450 x 195
A3999-229	Template Elliptical Portlight	485 x 225





A1490



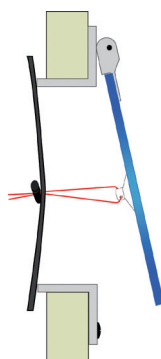
A2490



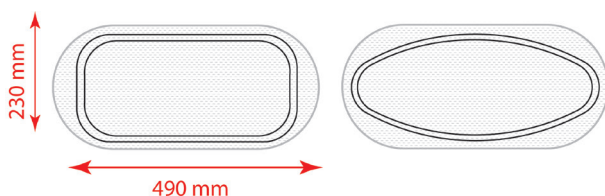
A3492

## Mosquito Net

Part No	Product description	Size [mm]
A1490	Oval Portlight	403 x 204
A2490	Rectangular Portlight	402 x 195
A2497	Rectangular Portlight	370 x 164
A2498	Rectangular Portlight	428 x 179
A2499	Rectangular Portlight	700 x 191
A3492	Elliptical Portlight	485 x 225
A34925	Elliptical Fixed Portlight	485 x 225
A3498	Elliptical Portlight	450 x 195
A34985	Elliptical Fixed Portlight	450 x 195
A4490	Round Portlight	250
A6-001	Universal All Portlights	



A6-001



A1-001



A2-001

## Spare Parts

Part No	Product description
A1-001	Opening knob kit
A2-001	Hinge kit



A1300-200



A2300-200



A3300-220

## Spare acrylic glass

Part no	Product description	Portlight size [mm]	Glass size [mm]	Glass thickness [mm]
A1300-200	Acrylic glass Oval Portlight Tinted	403 x 204	350 x 152	15
A2300-170	Acrylic glass Rectangular Portlight Tinted	370 x 164	315 x 110	15
A2300-180	Acrylic glass Rectangular Portlight Tinted	428 x 179	375 x 125	10
A2300-190	Acrylic glass Rectangular Portlight Tinted	700 x 191	645 x 135	10
A3300-190	Acrylic glass Elliptical Portlight Tinted	450 x 195	400 x 145	15
A2300-200	Acrylic glass Rectangular Portlight Tinted	402 x 195	350 x 145	15
A3300-220	Acrylic glass Elliptical Portlight Tinted	485 x 225	435 x 175	15
A4300-250	Acrylic glass Round Tinted	250	200	15

# HATCHES

## HATCHES

Using the best materials available, stainless steel, acrylic and composite, we offer a stunning range of hatches. There are three ranges with different design and application. The hatch frames have no welded seams to maximise the strength and integrity when confronted with the worst elements at sea. All hatches are CE approved for Area 2a.

Delivery time for our hatches is approximately 4 weeks. For detailed information, please see the specific hatch line.



Rutgerson Rund Classic Hatch

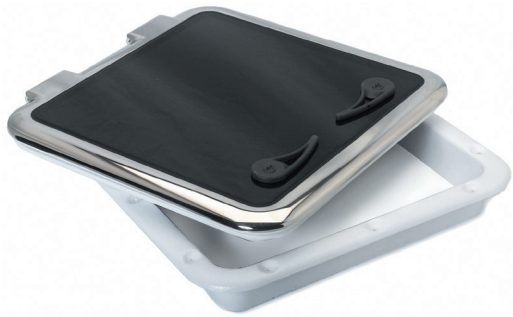


Rutgerson Exclusive Flush Hatch



Photo: Courtesy of Windy Boats





## **Classic Hatches**

Round Ø500 mm  
Half-round Ø500 mm  
Square 556x556 mm  
Square 456x456 mm  
Rectangular 556x276 mm



## **Master Flush Hatches**

Square size 10  
Square size 44  
Square size 60



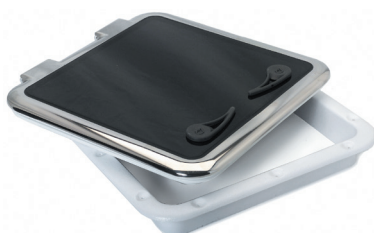
## **Exclusive Flush Hatches**

Round Ø500 mm  
Rectangular 200x340 mm  
Square 500x500 mm

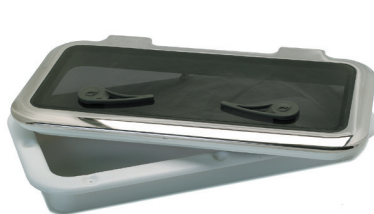
## Classic Hatch Line

Our Classic Hatch Line has an elegant, timeless design due to its seamless construction and mirror-polished frame. The hatch lid combines the highest grade Swedish stainless steel and acrylic glass. The frame is made of an extremely strong, UV-resistant composite material. The classic range is designed to compliment the aesthetics of all types of boats and generate a retro, classy feeling.

The hatches are available in different shapes: Round, square, half-round and rectangular. The thickness of the acrylic glass for the Classic Hatch range is 10mm.



H0111-4403



H0211-5203



H0311-0503



H1111-5503



H0411-2503

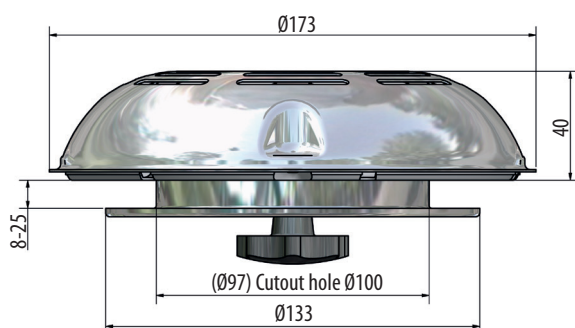


H1311-5503

### Classic Hatch Line

Part No	Product description	Dimension [mm]	Height [mm]	Weight [gr]
H0311-0503	Round hatch	500	27	4200
H1311-0503	Round hatch with air vent	500	27	4700
H0411-2503	Half-round hatch	500	27	3800
H0111-4403	Square hatch	456x456	27	4200
H0111-5503	Square hatch	556x556	27	7000
H1111-4403	Square hatch with air vent	456x456	27	4950
H1111-5503	Square hatch with air vent	556x556	27	7100
H5111-4403	Square hatch with stay	456x456	27	4400
H5111-5503	Square hatch with stay	556x556	27	7500
H0211-5203	Rectangular hatch	276x556	27	4100

## Classic Hatch Accessories



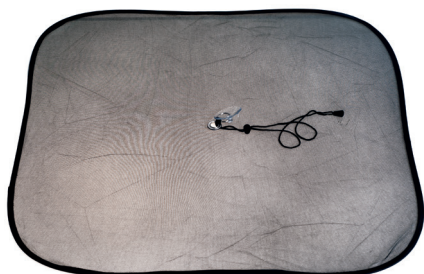
Air vent

### Air vent

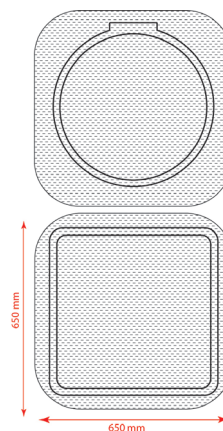
Part no	Diameter [mm]	Height [mm]	Weight [gr]	Air opening [mm <sup>3</sup> ]
H9-170	173	40	655	3580



## Hatch Accessories



H9-001



Universal Mosquito Net

Part No	Hatch type
H9-001	Universal

Accessories for Classic and Exclusive Flush Hatch

Part No	Product description
H2-380	Manual stay part
H5-001	Composite handle, left
H5-002	Composite handle, right
H5-003	Stainless steel outer handle and composite inner handle, left
H5-004	Stainless steel outer handle and composite inner handle, right



H5-001



H5-002

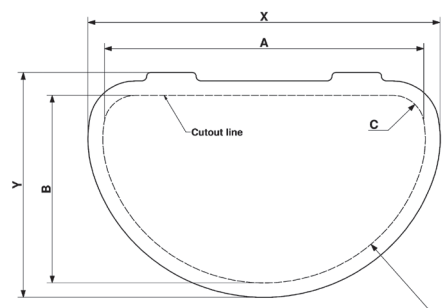
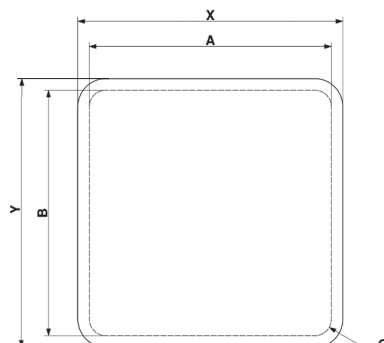
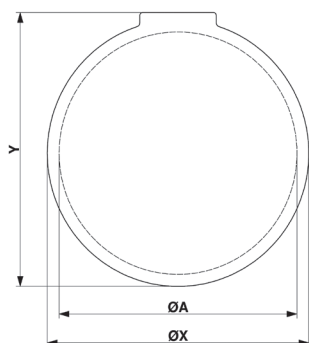


H5-003



H5-004

## Classic Hatches cutout



Shape of hatch	Outer dimensions [mm]	Cut-out dimensions [mm]			
		A	B	C Radius	D Radius
Round	X x Y	Ø482	-	-	-
Half-round	570 x 380	522	312	51	265
Square 500x500	556 x 576	508	508	34,5	-
Square 400x400	456 x 476	408	408	34,5	-
Rectangular	556 x 296	508	228	34,5	-

## Master Flush Hatch Line

The Rutgerson Master Flush hatches are at this stage available in sizes 10 ,44 and 60. The Master Line has a modern, trendy design that will give the boat a sporty image. As the name implies, the Master Flush hatch Line is flush but requires a recess on the deck. Once the recess is in place, however, the hatch is incredibly easy to install. The hatches consist of a faced, tinted acrylic glass and a frame made out of a high-tech composite. The handles can either be made of stainless steel or composite.

The combination of clever construction and the unique innovation of a composite frame results in the lightest and most durable hatch yet. The thickness of the acrylic glass for the Master Flush Hatch range is 12mm.

At a later stage size 60 will also be available, which will display the same superior level of performance as our existing hatches.

The Master Flush Line conforms to the CE standards EN ISO 12216:2002, EN ISO 9094-1 and EN ISO 9094-2.



H6000-1415



H4400-1415



H1000-1401

### Master Flush Hatch Line

Part No	Product description	Dimension [mm]	Height [mm]	Weight [gr]	Inner / Outer handles	Stay
H1000-1401	Hatch 10	330x330	31	2810	Composite black	Friction hinges
H1000-1403	Hatch 10	330x330	31	2810	Composite/stainless steel	Friction hinges
H1000-1405	Hatch 10	330x330	31	2810	Stainless steel	Friction hinges
H4400-1411	Hatch 44	512x512	31	5350	Composite black	Manual
H4400-1413	Hatch 44	512x512	31	5350	Composite/stainless steel	Manual
H4400-1415	Hatch 44	512x512	31	5350	Stainless steel	Manual
H6000-1411	Hatch 60	577x577	31	7400	Composite black	2xManual
H6000-1413	Hatch 60	577x577	31	7400	Composite/Stainless steel	2xManual
H6000-1415	Hatch 60	577x577	31	7400	Stainless steel	2xManual



H8-001



H8-004



H8-003



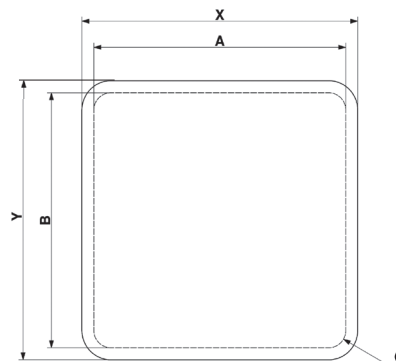
H8-002

### Accessories for Master Flush Hatch

Part No	Product description
H8-001	Stainless steel handle, left
H8-002	Stainless steel handle*, left
H8-003	Stainless steel handle*, right
H8-004	Stainless steel handle, right
H8-007	Manual stay spare part

\* With stay attachment

### Master Flush Hatch cutout



Shape of hatch	Outer dimensions [mm]	Cut-out dimensions [mm]		
	X x Y	A	B	C Radius
Square size 10	330 x 330	260	260	42,5
Square size 44	512 x 512	442	442	42
Square size 60	577 x 577	506	506	40



## Exclusive Flush Hatch Line

The Exclusive Flush hatch is the most luxurious hatch that you will find on the market. It is completely unique due to its stainless steel frame. This model is completely flushed against the deck, giving the boat a smooth and streamlined impression.

The boat designer can optimise the total construction of the deck due to the flush hatches' draining system, which is incorporated into the frame. Another unique aspect of this hatch is that the drainage hole is covered by a screen to prevent dirt from clogging up the drainage pipe.

The exclusive flush hatch does not require a recess on deck for installation. This is a very flexible solution, and it is possible to offer this model as a more luxurious option to the customer.

The flush hatch comes in two versions, one that suits teak-wooded decks and another for glass reinforced polyester decks. The different sizes are 200x340mm, 500x500mm and a round hatch with the diameter 500mm. These factors offer the customer the opportunity to choose a hatch that matches the boat perfectly. The thickness of the acrylic glass for the Exclusive Flush Hatch range is 15mm.

Rutgerson Flush Hatch Line conforms to the CE standards EN ISO 12216:2002 and EN ISO 9094-1 & 2



HF7111-2300



HF7111-5500



HF7311-0500

### Exclusive Flush Hatch Line

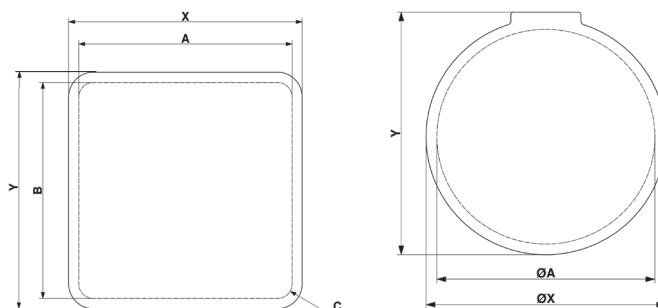
Part No	Product description	Dimension [mm]	Height [mm]	Weight [gr]	Stay
HF6111-2300	Rectangular hatch teak deck	200x340	1.5	5000	Gas
HF7111-2300	Rectangular hatch GRP* deck	200x340	1.5	5000	Gas
HF6111-5500	Square hatch teak deck	500x500	1.5	9500	Gas
HF7111-5500	Square hatch GRP deck	500x500	1.5	9500	Gas
HF6311-0500	Round hatch teak deck	500	1.5	9500	Gas
HF7311-0500	Round hatch GRP deck	500	1.5	9500	Gas

\* Glass reinforced polyester

### Core benefits

- Does not require a recess on the deck or change in the mold for installation. Just cut out the hole.

### Exclusive Flush Hatch cutout



Shape of hatch	Outer dimensions [mm]	Cut-out dimensions [mm]		
	X x Y	A	B	C Radius
Round	Ø610	Ø590	-	-
Rectangular	454 x 309	435	290	100
Square 500x500	614 x 614	595	595	99,5

## GENERAL WARRANTY & KEY TERMS OF SUPPLY BY RUTGERSON MARIN AB

### A) WARRANTY

#### 1) PERIOD OF WARRANTY

Rutgerson Marin AB issues a general warranty time durable for three years against malfunction or breakage from the date of delivery.

#### 2) WARRANTY COVERAGE

Products sold by Rutgerson Marin AB and in normal and customary use, are conditionally warranted against malfunction or breakage. The warranty does not cover:

- i) Defects or damage resulting from use of the product in other than its normal and customary manner;
- ii) Defects or damage from misuse, accident or neglect;
- iii) Defects from improper testing, operation, maintenance, installation, alteration, modification or adjustment;
- iv) Damage from unauthorized repair or alterations;
- v) Damage from corrosive materials, ultra violet degradation, wear or tear beyond the specification of the case or enclosure.

#### 3) WARRANTY PROCEDURE OF SERVICE OR REPLACEMENT

Notice of a claim for defect, service or replacement covered by this limited warranty shall be made promptly and in writing to the local Rutgerson distributor that supplied the product or to Rutgerson Marin AB. Products returned for service or replacement under this limited warranty must be assigned a valid RGA Return Goods Authorization number by Rutgerson Marin AB. Unidentified and unauthorized goods returned to Rutgerson Marin AB will NOT be approved or eligible for further investigation.

The customer is responsible for undertaking all expenses associated with transporting the goods to and from Rutgerson Marin AB or the local Rutgerson distributor that supplied the product. If the investigation of the product and the warranty claim reveals that the defect, malfunction or breakage is not covered by this limited warranty, the customer will be contacted and advised with respect to additional cost in conjunction with service or replacement.

For approved RGA goods, please send these together with assigned RGA documents to:

WARRANTY GOODS  
Rutgerson Marin AB  
Mjölkekilsgratan 21  
SE-442 66 Marstrand  
SWEDEN

### B) PURCHASE ON APPROVAL

Rutgerson Marin AB issues a general purchase on approval period durable for 60 days after delivery. Products that are subject for return needs to be unused and delivered to Rutgerson Marin AB in their original packing and according to the procedure stated in section (A3) above. Returned products will thereafter be subject to investigation and upon approval a 15% handling fee of the original purchase amount will be surcharged to all eventual credits. For all customized or one-off items, purchase on approval does not apply.

### C) SUPPLY

#### 1) PACKING QUANTITY

Products are supplied in stated packing and minimum purchase quantities only. For supply in smaller and/or customized quantities, additional terms will apply. For further information about alternative supply conditions, please contact Rutgerson Marin AB.

#### 2) DELIVERY TIME

All official delivery times endorsed by Rutgerson Marin AB are estimated and can be subject to changes. Rutgerson Marin AB is in the event of such related changes legislated to inform the customer.

#### 3) UNANTICIPATED DEFECTS & DELAYS

Rutgerson Marin AB shall not be liable for unanticipated defects/delays, nor shall it be liable for any damage, whether direct or indirect, beyond the provisions set forth above or otherwise provided to customers under statutory law legislation. In connection with delivery of incorrect or defective goods, the customer must promptly submit a complaint to Rutgerson Marin AB.

### D) DEFINITIONS

#### 1) SAFE WORKING LOAD (SWL)

Is the maximum static and/or dynamic load at which the product will still function without excessive friction, distortion, wear or permanent deformation of its components. Above this load, systems may fail, moving parts may seize and stainless steel or plastic components may begin to bend, stretch or otherwise deform. SWL should never exceed 55% of the breaking load (BL), and should never be exceeded in use.

#### 2) BREAKING LOAD (BL)

Is the load at, or around which, a major failure can be expected to occur to some part of the product's structure when new. Plastic components may split, rivets may give way, shackles may break and other metallic components may fracture. No product should be used at more than 55% of the breaking load.





## The Rutgerson original philosophy

It is my firm belief that innovator, designer or manufacturer of yacht fittings should know the open sea in really bad weather to understand what is going on.

The Rutgerson staff have been out there...

A handwritten signature in black ink, appearing to read 'Göran Rutgerson'.

Göran Rutgerson - 1976

**RUTGERSON**  
*Best in action*

### **Deck Hardware Distributor Network**

Rutgerson Marin AB is represented on all continents by an impressive network of over 40 local distributors. All our distributors have a long tradition of serving our customers with

dedication and knowledge of our products and their demands.

For updated information about our distributors, please visit [www.rutgerson.se](http://www.rutgerson.se).

### **Rutgerson Marin AB**

Mjölkekilsgatan 21,  
SE-442 66 Marstrand, Sweden  
+46 (0)303-20 66 50,  
[postmaster@rutgerson.se](mailto:postmaster@rutgerson.se)