

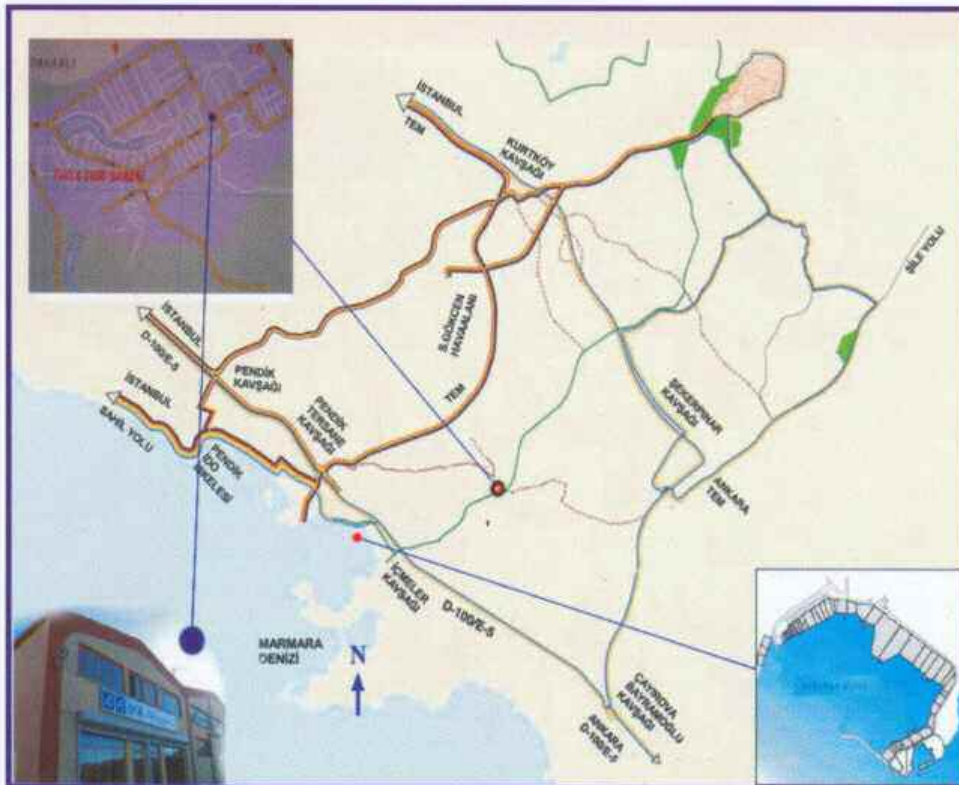


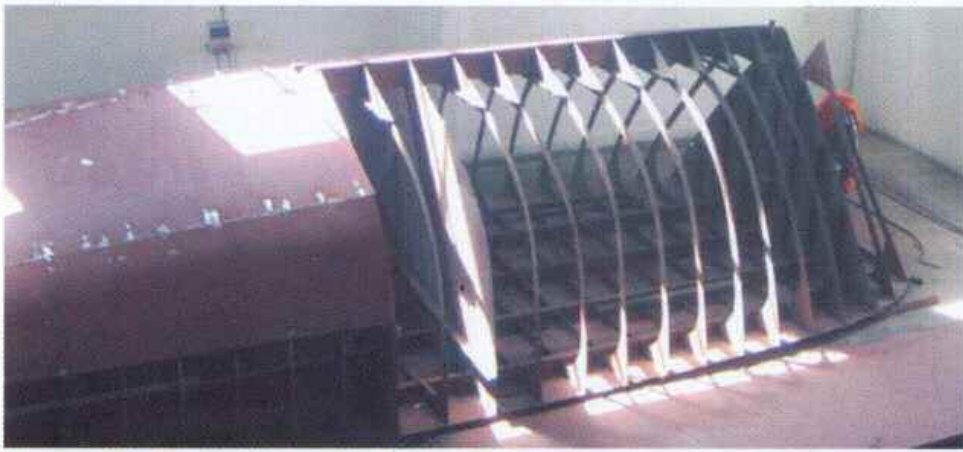
shipyard



Arya Shipyard Co.
Org.Deri San. Böl.
18. yol No:2
Tuzla/İstanbul
TURKEY

Phone: +90 216 394 20 98
+90 216 394 20 99
Fax : +90 216 394 26 00
aryashipyard@gmail.com





Arya Shipyard

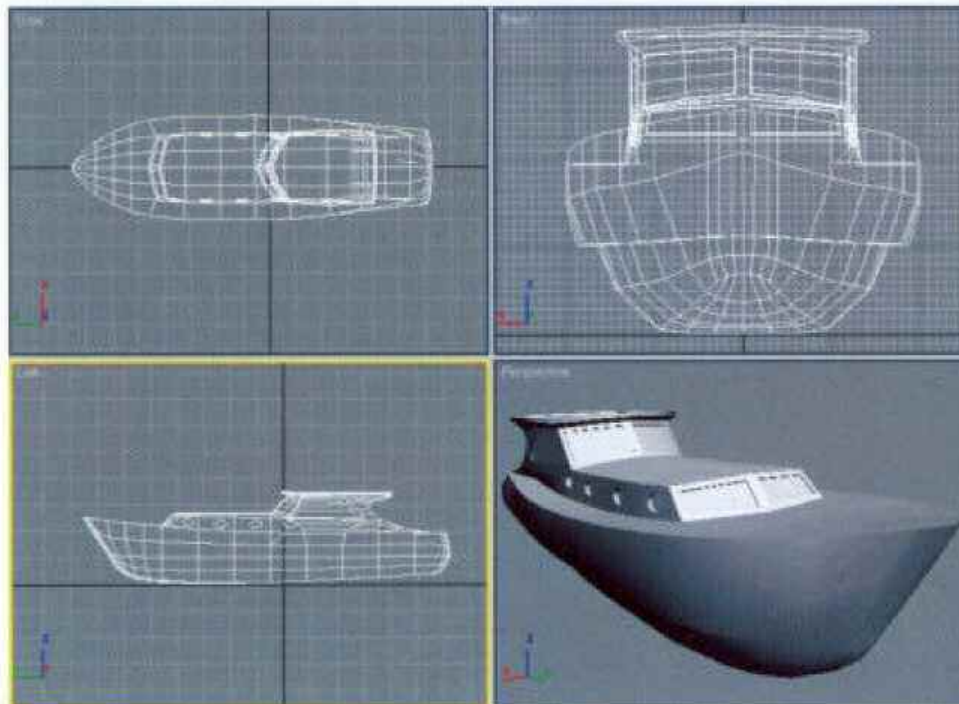
- 600 sqm covered and 2000 sqm open space available
- Upto 10 ton winch capacity
- Application of nesting Methods for each part to be produced
- Cutting by Oxygen & Plasma CNC



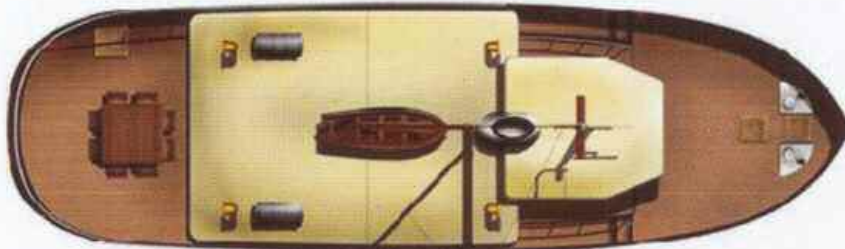
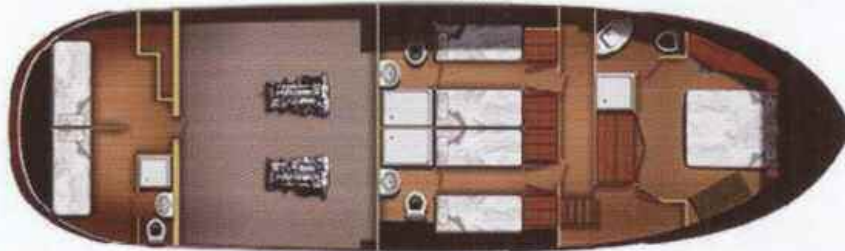


ARYA shipyard provides complete service and production with its design and new building facilities for all kinds of boats and ships under the approval of major class authorities such as TL, GL, BV, ABS, DNV...etc





Arya is a shipyard with design and new building facilities for lots of kind of ships...

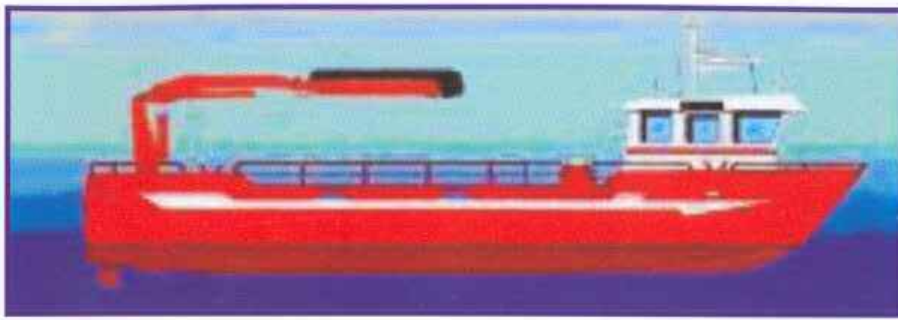


Steel hull construction of ATR 62 Trawler was ordered by Atlantik Trawler

Our engineers are working with 3d models on a digital platform before the beginning of the actual production phase in order to obtain the most efficient results for the new buildings.

All floating characters and structure analysis are being calculated on the computer before the start of the construction.

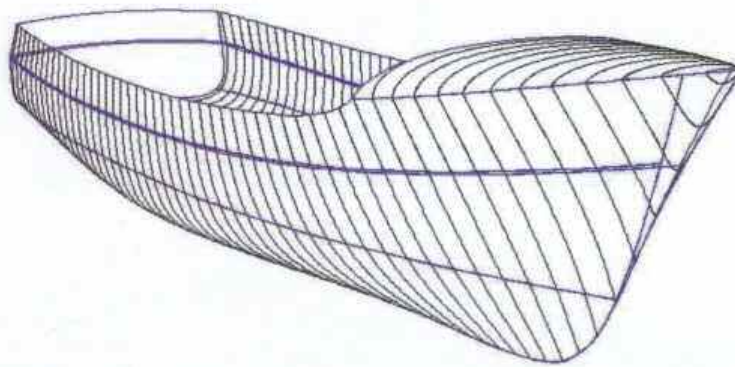
Our experienced surveyors are constantly controlling the production from the very beginning till the final.



Arya Shipyard is founded on the principle to satisfy the sector's needs and requirements with maximum efficiency and best quality.

In addition to the Arya Shipyard's production capacities we also offer full after sale services, training programmes, repair & maintainance works, desing and technical assistance as well as local survey work with it's qualifed staff.

3d model of a trawler boat prapered by Arya's specialist



3d section of frames.

01.07.2006

