



DENIZ INDUSTRY CO.
CICEK SHIPYARD

3150 D.W.T. IMO II OIL
CHEMICAL TANKER



25.000 D.W.T. DOUBLE
HULL BULK CARRIER



- SHIPBUILDER

- HULL NO

- Type of Vessel
- Scantling
- Deadweight
- Classification

- Cruising Range

DE
-C
TU
NE

TY
ac
ab
BV
Oli
UN
CLI
ICE
AL
Na

- **Main Dimensions**

Lenght O. A. 84.975 m.
Lenght B. P. 77.966 m.
Breadth moulded 12.60 m.
Depth to main deck 6.40 m.
Design draught 5.40 m

- **Main Engine**

abt 2 X 940 KW at 1600 rpm

- **Speed**

abt. 11.5 knot

- **Cargo Capacity**

Abt. 3500 m³ at %100 capacity
12 cargo tanks
+ 2 slop tanks on deck

- **Fuel Capacities**

MDO Abt. 175 m³

- **Deck's Machinery**

-1 hydraulic hose handling crane -2 tons SWL/10 m
-2 hyd. Comb. anchor and mooring winches
-2 hyd. Mooring winches aft
-1 comb. provision/rescue crane

- **Deck's equipment**

-1 Free-fall type lifeboat
-1 Rescue boat (MOB) for 12 persons
-3 Life rafts for 12 persons.

Special Plants

-BOW THRUSTER ABT. 200 KW
-DEEPWELL CARGO PUMPING SYSTEM
-2 X AZAMUTHING PROVISION UNITS.
(RUDDER THRUSTERS)

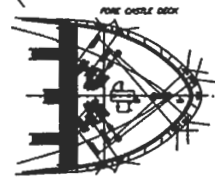
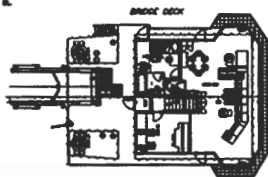
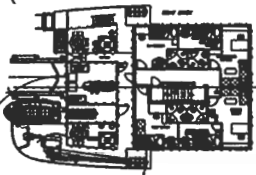
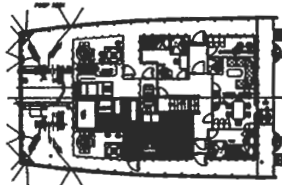
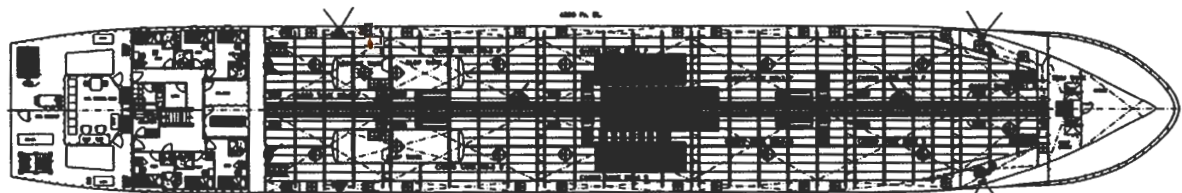
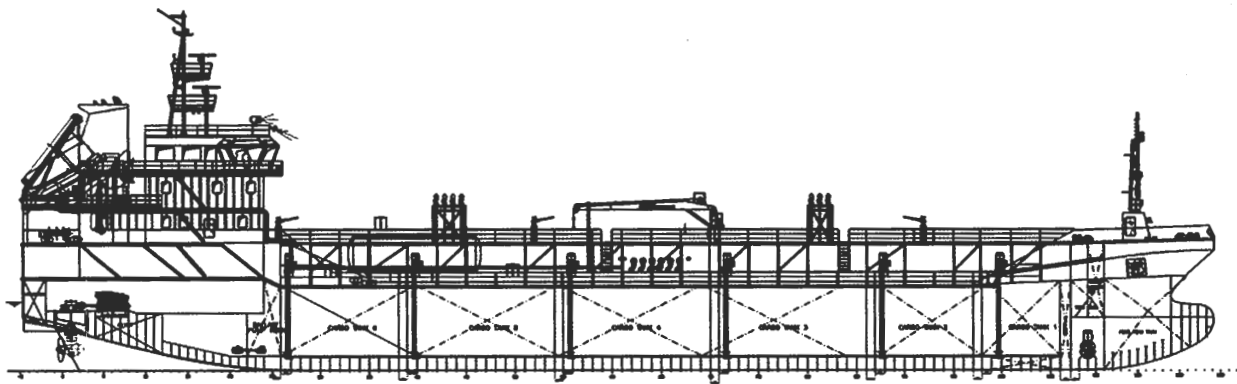
OIL

CHEMICAL TANKER

INIZ INDUSTRY CO.
CEK SHIPYARD, TUZLA / ISTANBUL,
URKEY
45, NB46, NB47, NB48

PE II OIL / CHEMICAL TANKER
c. toBV Rules
t. 3150 DWT at T:5.40 m.
I + HULL + MACH,
/ CHEMICAL TANKER, ESP,
RESTRICTED, NAVIGATION, AUT-UMS,
EAN SHIP, AVM - DPS, VCS - TRANSFER,
1B, INWATER SURVEY,
TERNATIVE / ASIMETRICAL LOADING AT SEA
utical rangeabt.4000nm





25.000 D.W.T. DOUBLE

HULL BULK CARRIER

SHIPBUILDER

DENIZ INDUSTRY CO. CICEK SHIPYARD,
TUZLA / ISTANBUL, TURKEY
CICEK SHIPYARD

DESIGNER

NB49, NB53

HULL NO

DOUBLE HULL BULK CARRIER

Type of vessel

Scantling

Deadweight

Classification

acc. to BV Rules

abt. 25000 DWT at T=9.924 m

BV HULL, MACH., BULK CARRIER,

CSR, BC-A, ESP, GRABLOADING,

UNRESTRICTED NAVIGATION

NONHOMLOAD, HEAVY CARGO,

+ AHT-UMS, CLEAN, MON SHAFT, IWS

DECK'S MACHINERY

CARGO CRANES

NMF GMBH 3 sets

SWL 35 t capacity, 4.0 - 26.0 m outreach
(Cargo Cranes with spare parts.)

2 Hyd. Anchor and mooring winches

2 Hyd. Mooring winches aft

1 Provision/rescue crane

STEP-UP GEAR BOX & SHAFT ALTERNATOR

BERG PROPULSION Step-up in 2 steps

173 RPM to 1805 RPM, Abt 982 kVA

PITCH CONTROL PROPELLER & SHAFTING

BERG PROPULSION Four propeller blades in
Cu-Ni-Al bronze, with moderate screw design
machined polished and balanced. 4200 mm diameter.

MAIN ENGINE

MAN B&W 8S35MC 5920 kW OUTPUT 173 RPM

Cruising Range

abt. 12000 NM (%90 fuel capacity)

Main dimensions

Length O. A. : 158.475 m
Length B. P. : 149.400 m
Breadth moulded : 25.00 m (MOULDED)

Depth to main deck : 13.95 m
Design draught : 10.00 m
Scantling draught : 9.924 m
Speed : abt. 13.0 Knot

