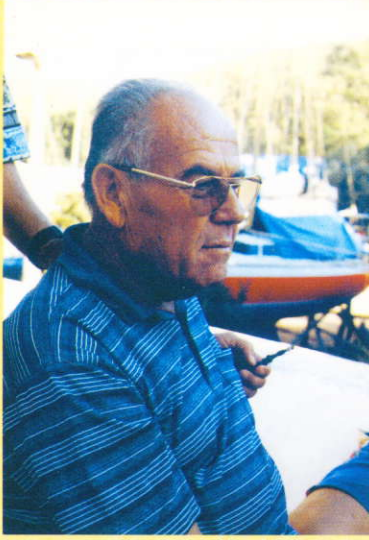




*"Bir geleneđi yařatıyoruz"*



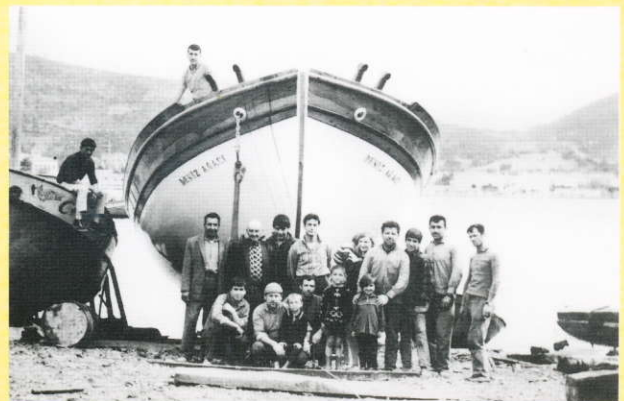
## Carrying on a tradition in Bodrum



The Shipyard Etemoğlu, where the most beautiful yachts of styles Gulet, Ketch and Tirhandil were built, which are cruising turkish and world seas, here changes wood to work of art and get enlived. We are placed in İçmeler-Area in Bodrum.

The production of the first vessels in The Shipyard Etemoğlu were initiated in the year 1949 at the historical place which is presently named The Ottoman Shipyard. With his passion for the sea inherited by his father Captain Etem, Master Erol Özyurt was building for 33 years rowboats, infantry boats, fisher boats, tirhandils and gulets; thereafter due to increasing of tourism and commence of yacht tours called blue journey, the master began to build the required yachts

where the passengers were entertained luxuriously. In regard on their workmanship, design, comfort of usage and as most important point their posture on sea the yachts built by him mostly attracted attention and were preferred. In 1982 moved The Shipyard Etemoğlu to the area İçmeler and started to manufacture today's requirements for the bigger and modern yachts. Erol Özyurt was continuously achieving better and modern works in his working life as master and trained a lot of craftsmen to build yachts in Bodrum today, thus he played an important part of the progress of this sector. Master Erol Özyurt handed over The Shipyard Etemoğlu to his son İsmail Özyurt. Master İsmail Özyurt promoted The Shipyard Etemoğlu to new horizons, and the most beautiful, most aesthetic and top modern yachts of styles gulet, ketch and tirhandil presently are produced by using of the top modern technology of wooden yacht manufacturing. At The Shipyard Etemoğlu are presently produced yachts of any measurments with laminated body by using the best quality and long life woods such as mahogany, acacia, cipo, teak and the superb adhesive of today's chemistry industry Epoxi, with maximum luxurious and comfortable interior, to drive by motor and by sail. At the modern stocks of The Shipyard Etemoğlu, four yachts can be put on the stocks at the same time.

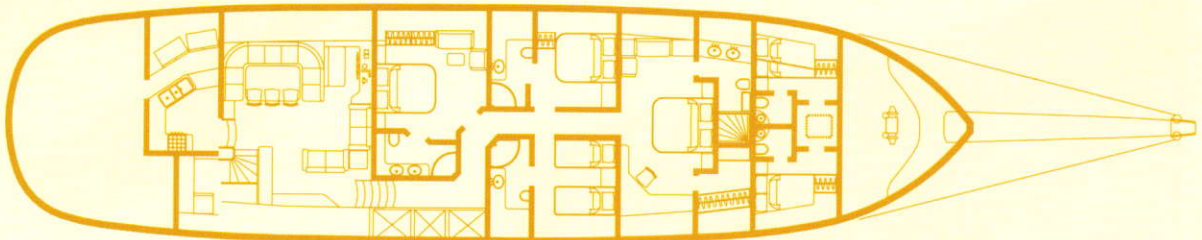


# BLACK SEA



## TECHNICAL SPECIFICATIONS

Type	: Traditional Bodrum Gulet
Rig	: Ketch
Loa	: 32.80 m
Beam	: 7.80 m
Draught	: 3.05 m
Displacement	: 104 Tons
Speed	: 11 Knots
Engine (S)	: Volvo Penta 450 Hp X 2
Gen-Sets	: Onan 2x30 KVA
Class Society	: R.I.N.A.
Class	: 100 A 1.1 IYI



# BLACK SEA

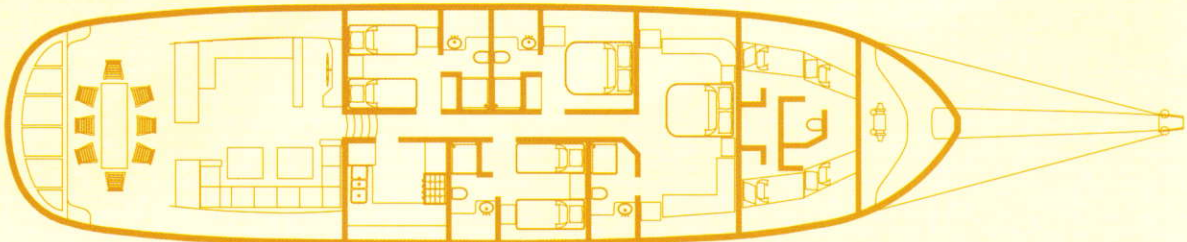


## CARPE DIEM

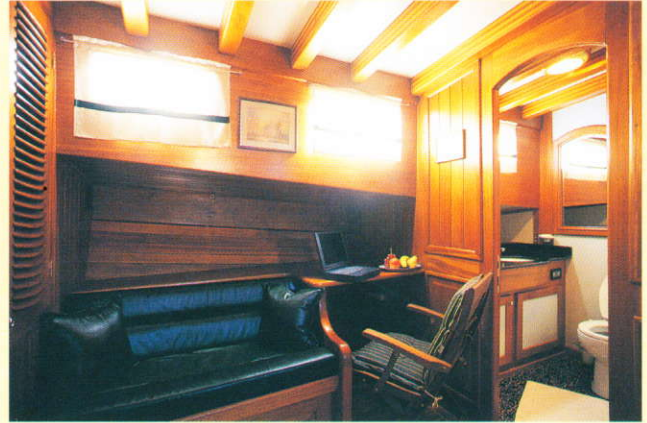


### TECHNICAL SPECIFICATIONS

Type	: Traditional Bodrum Gulet
Rig	: Ketch
Loa	: 28.00 m
Beam	: 7.00 m
Draught	: 2.7 m
Displacement	: 92 Tons (206.080 Lbs)
Speed	: 12 Knots
Engine(S)	: Iveco Aifo 450 Hp
Sails	: 550 Sqm
Gen-Sets	: Onan 22.5 KwaX1 + 17.5 KwaX1
Fuel Capacity	: 2 Tons
Fresh Water	: 4 Tons
Constr. Date	: 2003



# CARPE DIEM

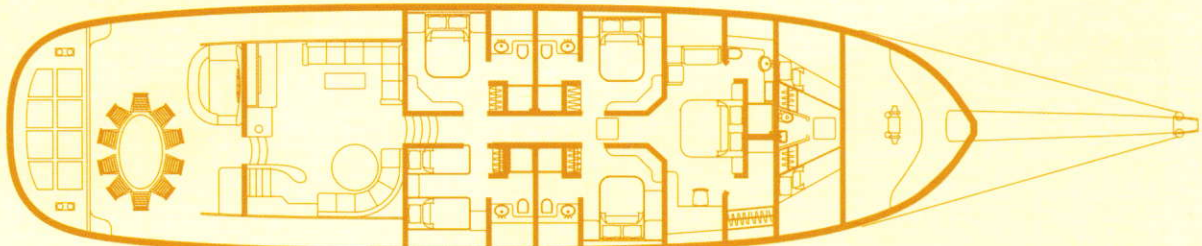


# COBRA QUEEN

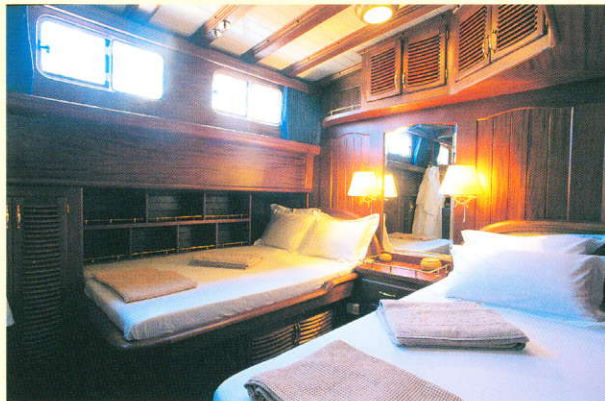
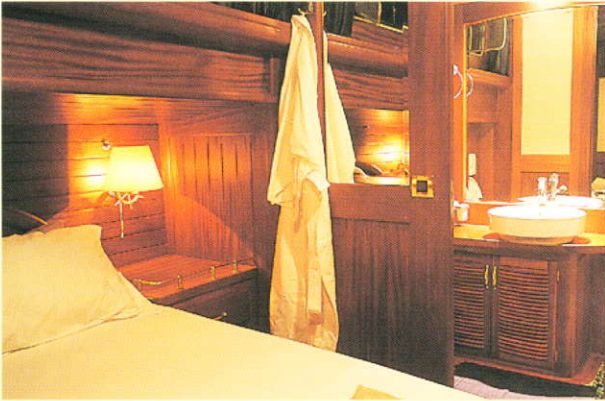


## TECHNICAL SPECIFICATIONS

Type	: Traditional Bodrum Gulet
Rig	: Ketch
Loa	: 32.00 m ( 105 Feet)
Beam	: 7.80 m ( 25 Feet 6î)
Draught	: 2.55 m ( 8 Feet 4î)
Displacement	: 120 Tons (264.00 Lbs)
Speed	: 13 Knots With Engines , 12 Knots With Sails
Engine(S)	: Man 400 Hp X 2
Sails	: 552 Sqm (5940 Square Feet)
Gen-Sets	: Onan 22.5 Kwa X 2
Fuel Capacity	: 5 Tons
Fresh Water	: 15 Tons
Black Water	: 5 Tons
Construction Date	: 2003



# COBRA QUEEN



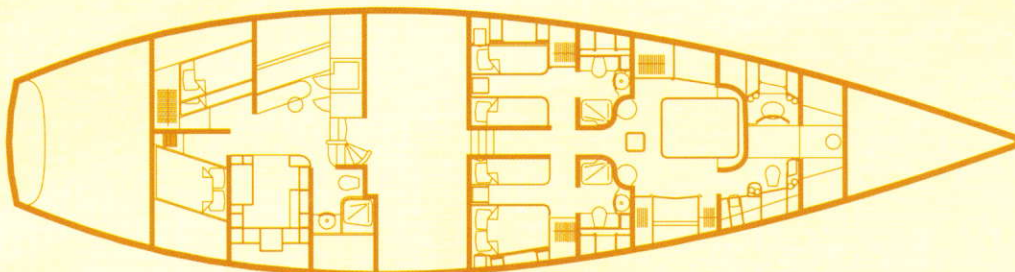


# LADIES FIRST

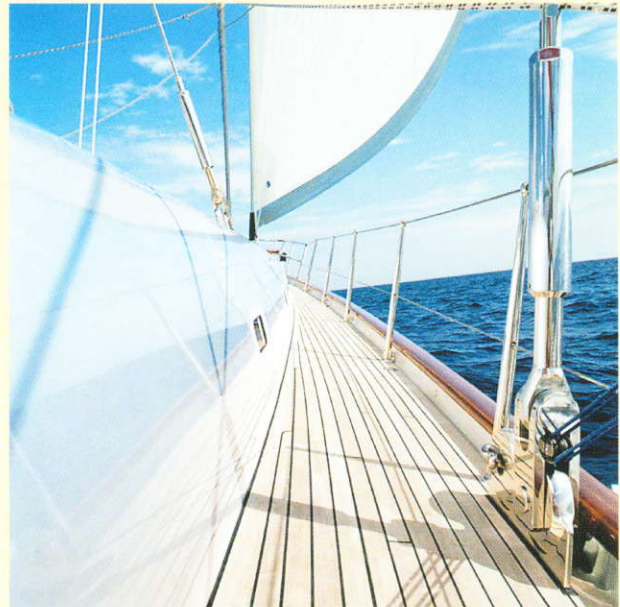


## TECHNICAL SPECIFICATIONS

Length O.A	: 27 m (88,6 ft)
Length W.L	: 20.8 m (68,2 ft)
Beam	: 7 m (23,0 ft)
Draft	: (3.18 ft)
Tonnage	: Displacement 89 tons
Year Built	: 2005
Construction	: Wooden Laminated & Epoxy Fibre Coated
Rigging	: Ocean Yacht Systems Rod Rigging Harken Hydraulic Furlers & Winchs
Main Engines	: ? - 2 x 265 hp at 2300 rpm – Volvo Penta
Fuel Tank Capacity	: 4000 litres (1050 US gallons)
Water Tank Capacity	: 4000 litres (1050 US gallons)



## LADIES FIRST



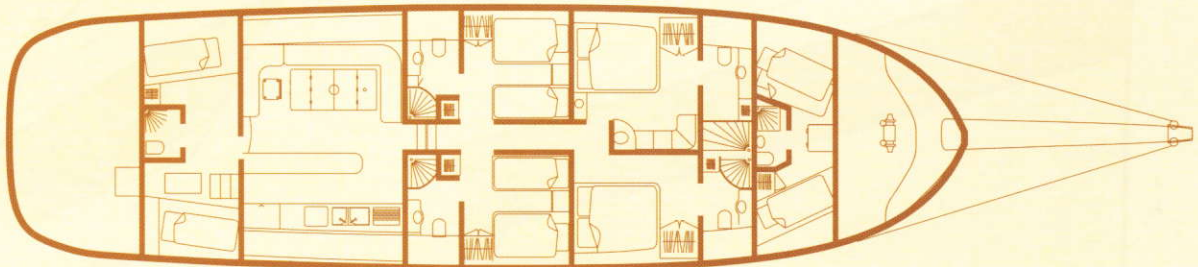
- WaterMaker : 4000 litres (1050 US gallons) per day  
Propulsion System : Controllable Pitch Propeller System by West Mekan  
Air- Conditioning : Separate air-conditioning system (97000 BTU) with individual controls throughout  
Accommodation : 1 x Master cabin with bathroom and a steam bath en suite  
                          2 x Double cabins each with bathrooms en suite  
                          1 x Double Captain's cabin  
                          1 x Crew cabin with two single beds  
Safety : Safety equipment to exceed class & MCA requirements

# SAMARKAND



## TECHNICAL SPECIFICATIONS

Length Overall	: 23.95 m.
Beam	: 6.70 m.
Engine	: 280 hp Iveco
Cabins	: 4
Wc & Shower	: 4
Power Suplly	: 2 x 17.5 Kwa Onan 220 V Genset
Fuel Capacity	: 3.7 tons
Water Capacity	: 6 tons
Communication	: VHF radio, Direct Mobile, Color Radar, GPS.



# SAMARKAND

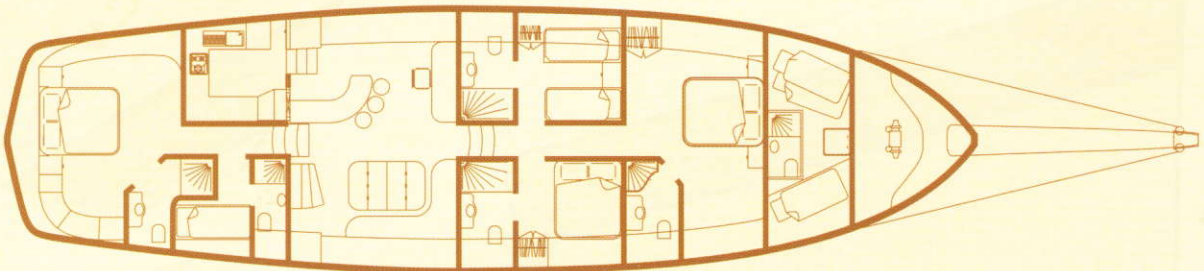


## WHY NOT II



### TECHNICAL SPECIFICATIONS

Length Overall	: 23.95 m.
Beam	: 6.70 m.
Engine	: 237 hp Volvo Penta
Cabins	: 4
Wc & Shower	: 4
Power Supply	: 2 x 17.5 Onan 220V Genset
Fuel Capacity	: 4 tons
Water Capacity	: 3.5 tons
Communication	: VHF radio, Direct Mobile, Color Radar, GPS, Satelite TV, Navtex



## WHY NOT II



