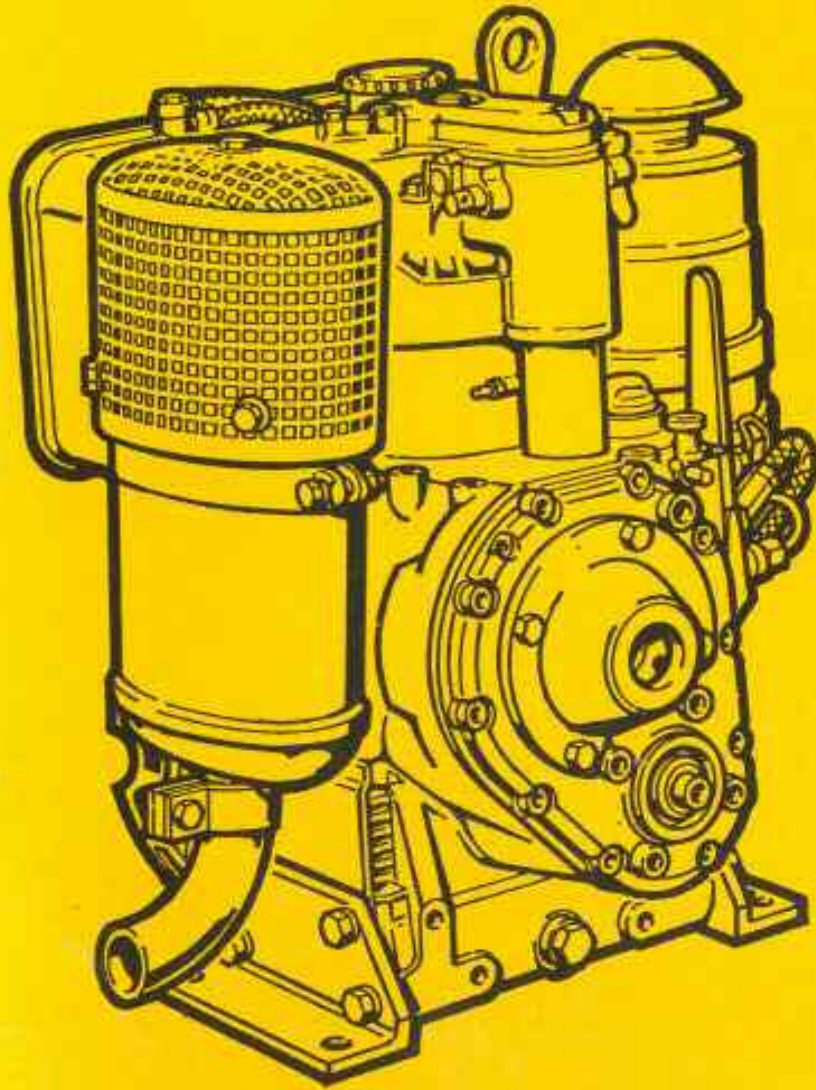


YEDEK PARÇA KATALOGU



- * Kalitesini milyonlarca defa kanıtlamış
- * Ekonomik
- * Emniyetli
- * Güçlü
- * Gürültüsü azaltılmış
- * Hava soğutmalı



PANCAR
MOTOR
DIESEL
TÜRK MALI

E71
E75
E79
E780
E786

Lütfen aşağıdaki kısımları doldurunuz.

1

Yandaki kısma Motorun etiketi üzerinden, Motor Tipini, Motor Numarasını, Motor Devrini yazınız.



PANCAR MOTOR

**DIESEL
TÜRK MALI**

Tip

No.

Devir/dak.

**Pancar Motor Sanayi ve Ticaret A.Ş.
Bayrampaşa - İstanbul**

1

2

Yandaki kısma satıcı firma kaşesini basınız.



2

3

Yandaki kısma bulunduğunuz yere en yakın PANCAR MOTOR servisinin adresini yazınız.



PANCAR MOTOR Servisi

10 AGUSTOS 1994

3

Bu mamul, Fatura tarihinden itibaren malzeme ve montaj hatalarına karşı bir yıl garantilidir.

PANCAR MOTOR SAN. VE TİC. A.Ş.
Eski Edirne Asfaltı
Kartaltepe Mah. No. 33
Bayrampaşa - İSTANBUL
Tel. : (1) 545 46 50 - 10 Hat
Tlx. : 30067 pamo
Fax : (1) 578 03 41
Tlg. : PANCAR MOTOR

Yedek Parça Siparişlerinde Dikkat Edilmesi Gereken Hususlar:

Sayın PANCAR MOTOR Sahiplerine,

Sahibi bulunduğunuz Pancar Motor, kendi güç sınıflarında bugün için en iyi çalışma randımanı veren, en son teknik icaplar göz önünde tutularak imal edilen Motorları temsil etmektedirler. Bu motorlar kullanma talimatlarına uygun bir şekilde çalıştırıldığında ve dikkatli bir bakıma tabi tutulduğunda, son derece uzun ömürlüdür. Ancak normal yıpranma ve aşınma neticesinde yedek parçaya ihtiyaç duyarlar.

Motorunuz için normal aşınma dolayısı ile ihtiyaç duyacağınız yedek parçalar için, sipariş verilmesinde, her hangi bir yanlışlığa meydan vermemek bakımından, şu hususların mutlaka bildirilmesi lâzımdır:

- 1- Arzu edilen Parçanın numarası,
- 2- Motor Numarası,
- 3- Açık posta adresi,
- 4- Ödemenin ne şekilde yapılacağı,

I. Yedek parça siparişlerinde tereddüte düşüldüğünde
hızzat Pancar Motor Yedek Parça Servisinden veya
satış acentelerinden aydınlatıcı bilgi alınabilir.

II. Garantiden yapılan onarımlarda hatalı parçaların fab-
rikamıza gönderilmesi gerekir.

III. Garanti, sadece motorla ilgili parça ve işçilik
ücretlerini kapsayıp başkaca zararları kapsamaz.

PANCAR MOTOR SAN. VE TİC. A.Ş.

Eski Edirne Asfaltı

Kartaltepe Mah. No. 33

Bayrampaşa - İSTANBUL

Tel. : (1) 545 46 50 - 10 Hat

Tlx. : 30067 pamo

Fax : (1) 578 03 41

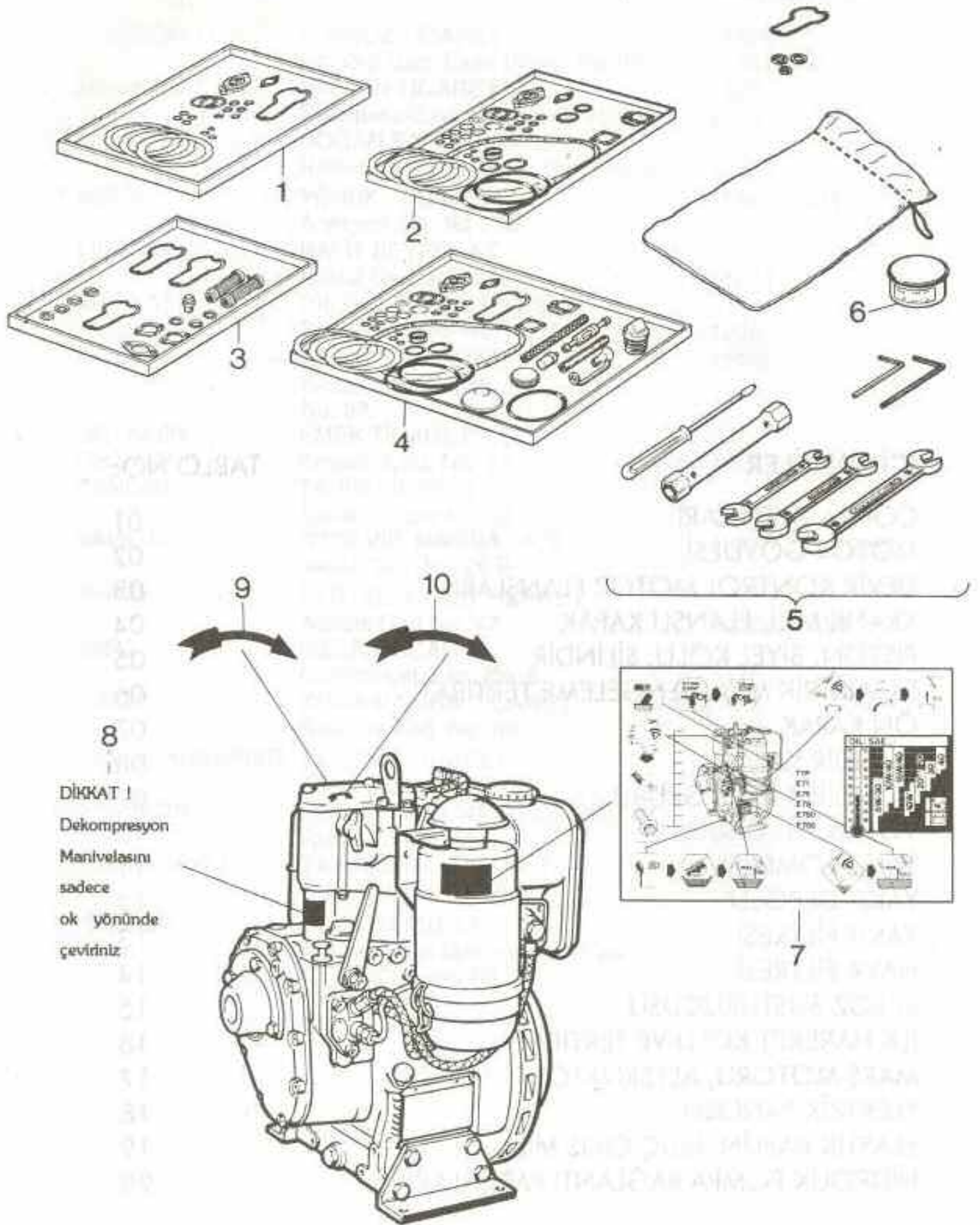
Tlg. : PANCAR MOTOR

İÇİNDEKİLER

TABLO NO:

CONTA TAKIMLARI	01
MOTOR GÖVDESİ	02
DEVİR KONTROL MOTOR FLANŞLARI	03
KRANK MİLİ, FLANŞLI KAPAK	04
PİSTON, BİYEL KOLU, SİLİNDİR	05
EKSANTRİK MİLİ, DENGELEME TERTİBATI	06
ÖN KAPAK	07
SİLİNDİR KAFASI	08
SİLİNDİR KAFASI GRUBU	09
VOLAN, TİJ GRUBU	10
YAKIT POMPASI	11
YAKIT DEPOSU	12
YAKIT FİLTRESİ	13
HAVA FİLTRESİ	14
EKSOZ SUSTURUCUSU	15
İLK HAREKET KOLU VE TERTİBATI	16
MARŞ MOTORU, ALTERNATÖR	17
ELEKTRİK PANOSU	18
ELASTİK KAPLİN, GÜÇ ÇIKIŞ MİLİ	19
HİDROLİK POMPA BAĞLANTI PARÇALARI	20

TABLO NO. 01 CONTA TAKIMLARI , TAKIM CONTASI KİTİ



01

PARÇA NO.

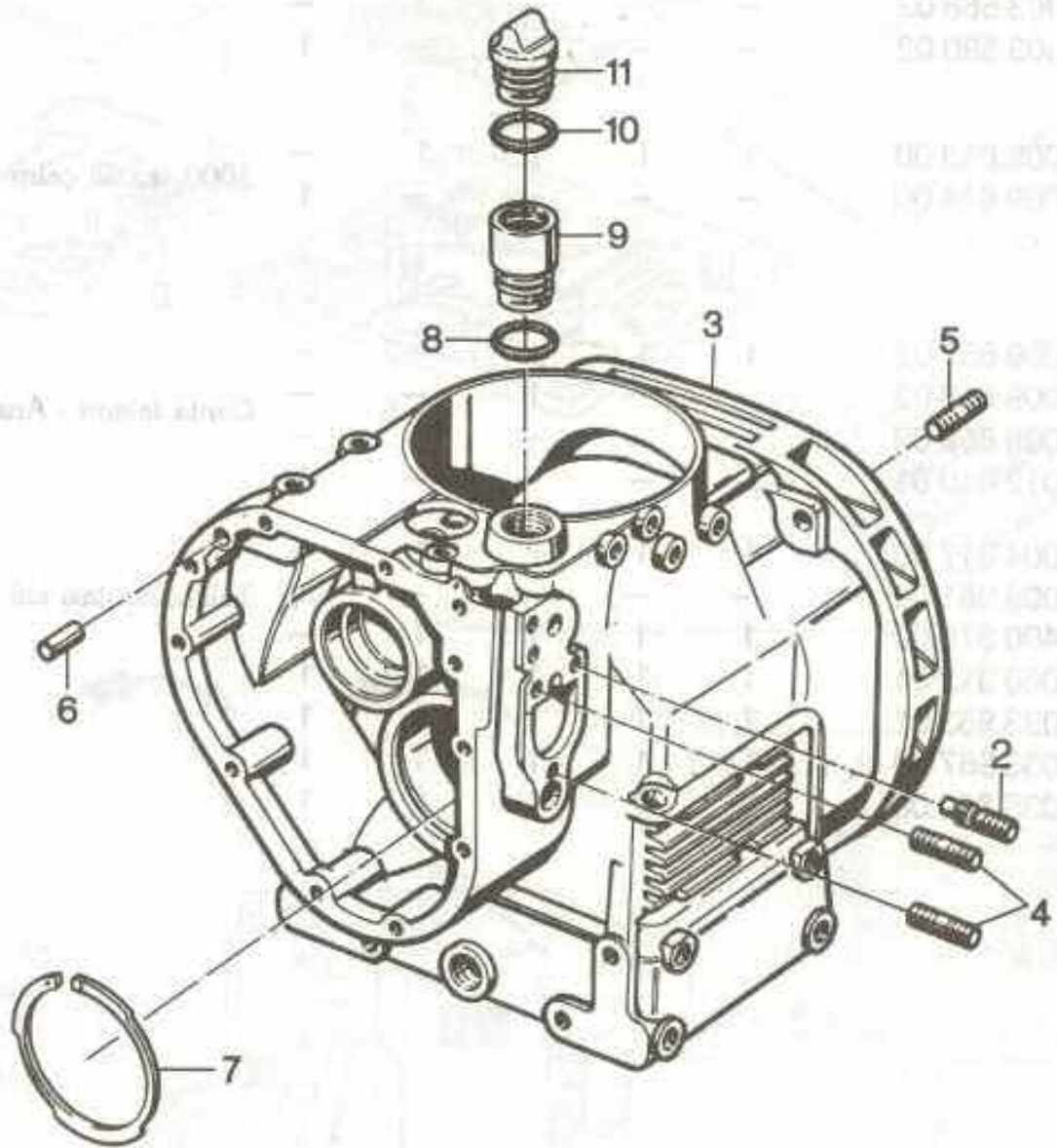
MİKTAR

AÇIKLAMALAR

E 71 | E 75 | E 79 | E 780 | E 786

	PARÇA NO.	E 71	E 75	E 79	E 780	E 786	AÇIKLAMALAR
1	003 394 10 P1	1	1	—	—	—	Conta takımı - sil. kafası için
1	003 552 10 P1	—	—	1	1	—	
1	003 589 10 P1	—	—	—	—	1	
2	003 395 02	1	1	—	—	—	Conta takımı - Yağ keçesiz
2	003 553 02	—	—	1	—	—	
2	003 566 02	—	—	—	1	—	
2	003 590 02	—	—	—	—	1	
3	009 613 00	1	1	1	1	—	1000 saatlik çalışma kiti
3	009 614 00	—	—	—	—	1	
4	009 657 02	1	1	—	—	—	Conta takımı - Arıza bakım için
4	009 658 02	—	—	1	—	—	
4	009 659 02	—	—	—	1	—	
4	012 010 01	—	—	—	—	1	
5	004 317 00	1	1	1	1	—	Takım contası kiti
5	009 981 00	—	—	—	—	1	
6	400 370 00	1	1	1	1	—	
7	036 312 01	1	1	1	1	1	
8	033 963 01	1	1	1	1	1	
9	033 967 00	1	1	1	1	1	
10	035 890 00	1	1	1	1	1	

TABLO NO. **02** MOTOR GÖVDESİ



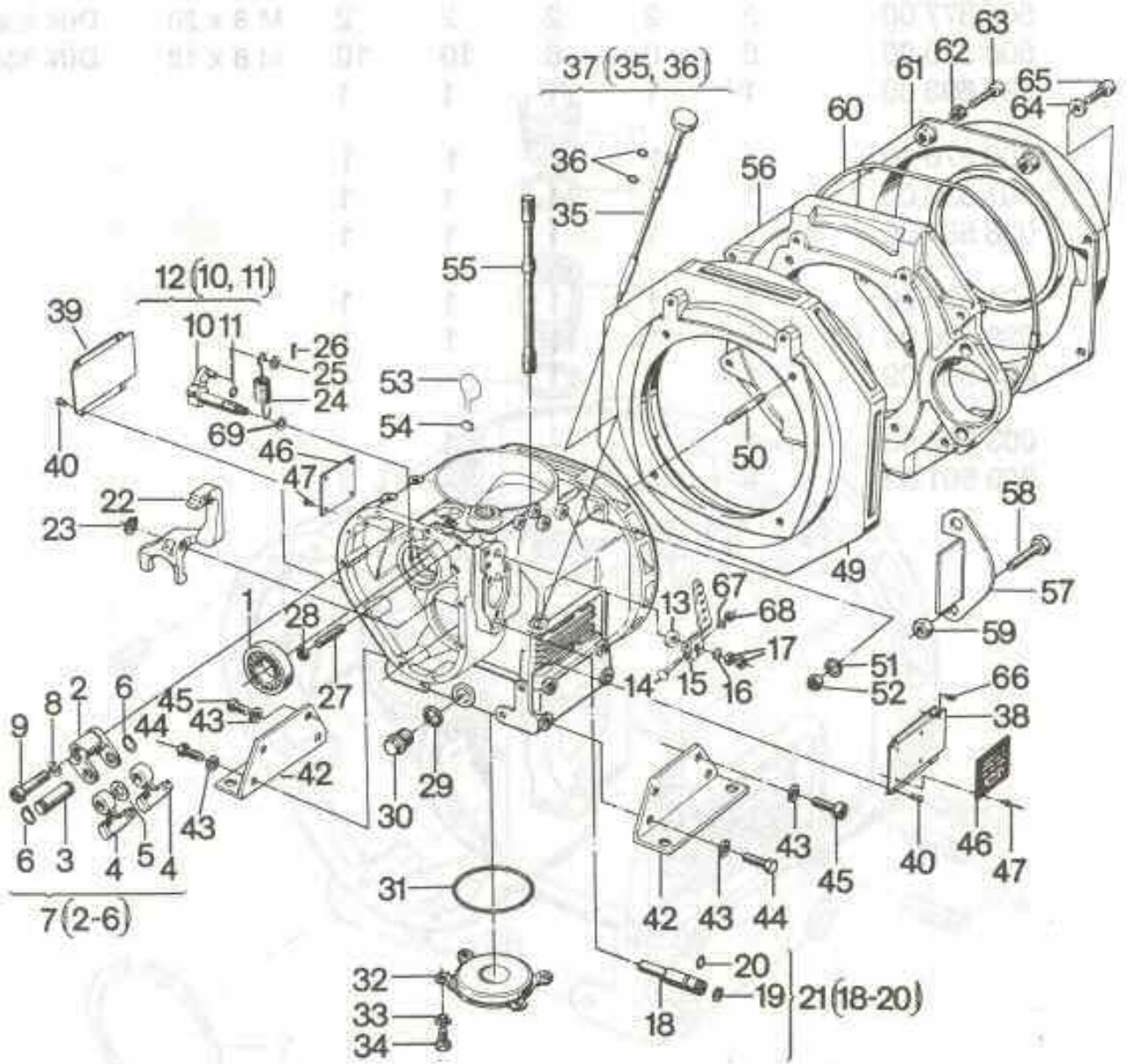
12(3-11)

E 71 | E 75 | E 79 | E 780 | E 786

	PARÇA NO.	E 71	E 75	E 79	E 780	E 786		
1	—	—	—	—	—	—		
2	037 746 00	1	1	1	1	1		
3	—	—	—	—	—	—		
4	500 377 00	2	2	2	2	2	M 8 x 20	DIN 939 - 5.6
5	500 373 00	6	6	6	10	10	M 8 x 18	DIN 835-10.9
6	031 693 00	1	1	1	1	1		
7	400 276 00	1	1	1	1	1		
8	501 538 00	1	1	1	1	1		
9	036 584 00	1	1	1	1	1		
10	501 538 00	1	1	1	1	1		
11	030 690 04 P1	1	1	1	1	1		
12	003 554 02	1	1	1	—	—		
12	003 567 03	—	—	—	1	—		
12	003 591 02	—	—	—	—	1		



TABLO NO. **03** DEVİR KONTROL ,MOTOR FLANŞLARI

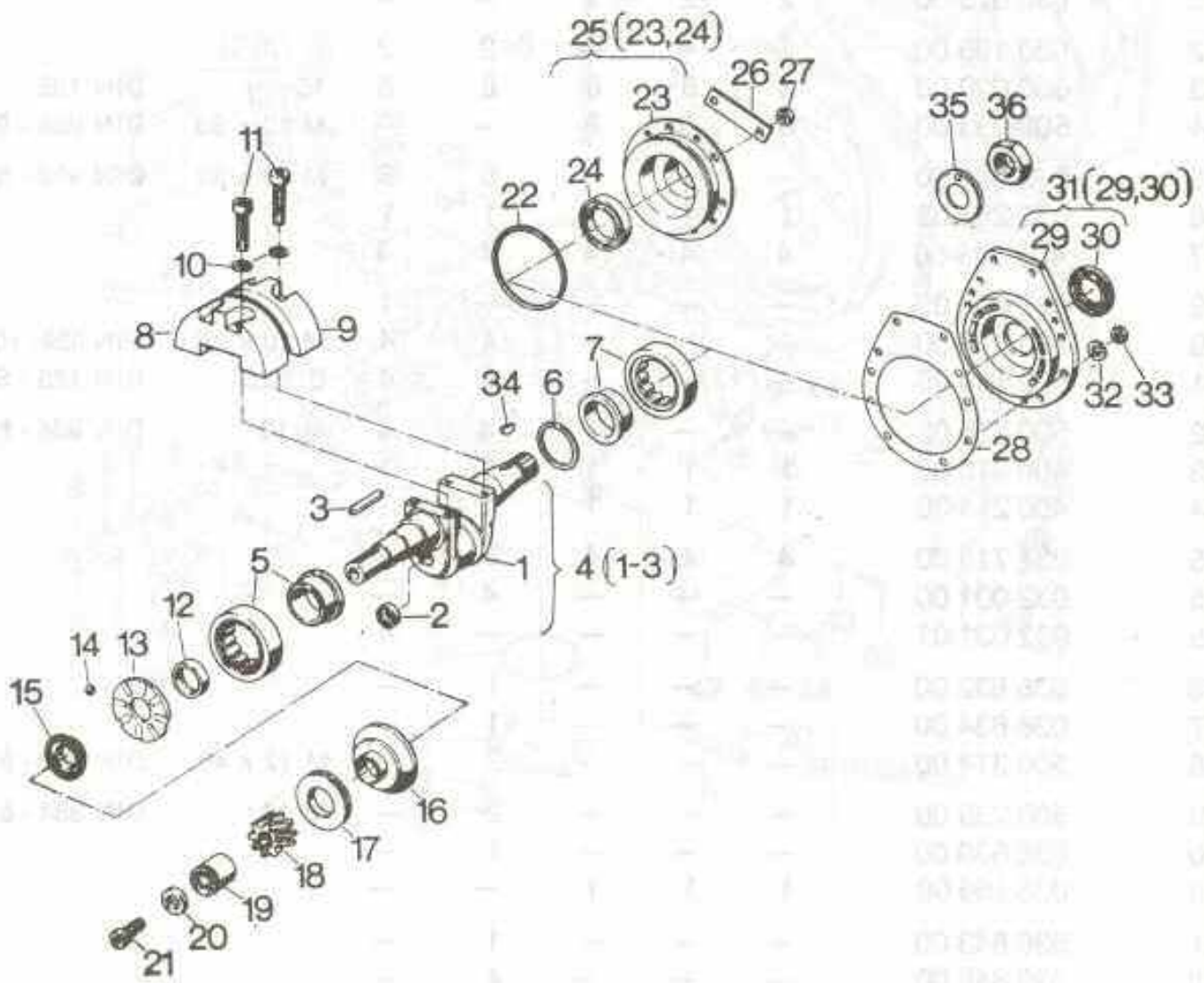


E 71 | E 75 | E 79 | E 780 | E 786

	PARÇA NO.	E 71	E 75	E 79	E 780	E 786		
1	500 142 00	1	1	1	1	1		
2	030 091 00	1	1	1	1	1		
3	031 688 00	1	1	1	1	1		
4	030 090 02	2	2	2	2	2		
5	031 694 00	1	1	1	1	1	0,1 mm	
5	031 696 00	1	1	1	1	1	0,2 mm	
5	031 697 00	1	1	1	1	1	0,3 mm	
5	031 698 00	1	1	1	1	1	0,5 mm	
6	500 195 00	2	2	2	2	2	12 x 1	DIN 471
7	003 396 00	1	1	1	1	1		
8	500 029 00	1	1	1	1	1	10	DIN 128
9	031 704 00	1	1	1	1	1		
10	—	—	—	—	—	—		
11	400 223 00	1	1	1	1	1		
12	003 002 00	1	1	1	1	1		
13	031 462 00	1	1	1	1	1		
14	502 803 00	1	1	1	1	1	M 6 x 32	DIN 603-8.8
15	038 883 00	1	1	1	1	1		
16	500 169 00	1	1	1	1	1	B 10,5	DIN 125-St
17	500 238 00	2	2	2	2	2	BM 10	DIN 439-6
18	—	—	—	—	—	—		
19	400 310 00	1	1	1	1	1		
20	400 223 00	1	1	1	1	1		
21	005 579 00	1	1	1	1	1		
22	010 603 00	—	—	—	—	1		
22	030 084 05	1	1	1	1	—		
23	500 194 00	1	1	1	1	1	8 x 0,8	DIN 471
24	031 949 02	1	1	1	1	—	2,1 mm ϕ	$\leq 2100 \text{ min}^{-1}$
24	037 708 00	—	—	—	—	1	2,0 mm ϕ	$\leq 2100 \text{ min}^{-1}$
24	037 699 00	—	—	—	—	1	2,4 mm ϕ	$> 2100 \text{ min}^{-1}$
24	031 948 01	1	1	1	1	—	2,6 mm ϕ	$> 2100 \text{ min}^{-1}$
25	031 332 00	1	1	1	1	1		
26	500 361 00	1	1	1	1	1	2 x 22	DIN 94
27	031 695 01	1	1	1	1	1		
28	500 232 00	1	1	1	1	1	BM 8	DIN 439 - 5
29	500 015 00 W7	1	1	1	1	1	A 21 x 26	DIN 7603-Cu
30	031 691 03 W1	1	1	1	1	1		
31	502 229 00	1	1	1	1	1		
32	030 032 01	1	1	1	1	1		

	PARÇA NO.	MİKTAR					AÇIKLAMALAR	
		E 71	E 75	E 79	E 780	E 786		
33	500 028 00	4	4	4	4	4	8	DIN 128
34	500 267 00	4	4	4	4	4	M 8 x 16	DIN 933 - 8.8
35	—	—	—	—	—	—		
36	400 217 00	2	2	2	2	2		
37	003 071 02	1	1	1	1	1		
38	031 690 00	1	1	1	1	1		
39	031 692 00	1	1	1	1	1		
40	500 055 00	8	8	8	8	6	3 x 12	DIN 1476
42	030 075 00	2	2	2	—	—		
42	030 165 00	—	—	—	2	2		
43	500 029 00	8	8	8	8	8	10	DIN 128
44	500 293 00	8	8	8	—	—	M 10 x 30	DIN 933 - 8.8
45	500 541 00	—	—	—	8	8	M 10 x 30	DIN 912 - 8.8
46	032 255 03	1	1	1	1	1		
47	400 025 00	4	4	4	4	4		
49	032 008 03	—	—	—	—	1		
50	500 408 00	—	—	—	4	4	M 10 x 28	DIN 939-10.9
51	500 169 00	—	—	—	4	4	B 10,5	DIN 125 - St
52	500 235 00	—	—	—	4	4	M 10	DIN 934 - 8
53	400 215 00	1	1	1	1	1		
54	400 214 00	1	1	1	1	1		
55	031 716 00	4	4	4	—	—		
55	032 001 00	—	—	—	4	—		
55	032 031 01	—	—	—	—	4		
56	036 632 00	—	—	—	1	—		
57	036 634 00	—	—	—	1	—		
58	500 314 00	—	—	—	2	—	M 12 x 40	DIN 933 - 8.8
59	500 239 00	—	—	—	2	—	M 12	DIN 934 - 8
60	036 630 00	—	—	—	1	—		
60	036 156 00	1	1	1	—	—		
61	036 843 00	—	—	—	1	—		
62	036 845 00	—	—	—	4	—		
63	500 538 00	—	—	—	4	—	M 10 x 25	DIN 912 - 8.8
64	036 844 00	—	—	—	4	—		
65	500 522 00	—	—	—	4	—	M 8 x 30	DIN 912 - 8.8
66	500 183 00	—	—	—	—	2	3 x 12	DIN 1477
67	501 143 00	1	1	1	1	1	6,4	DIN 7349
68	501 444 00	1	1	1	1	1	M 6	DIN 934-8 A3C
69	502 870 00	1	1	1	1	1	25 x 12,2 x 1	

TABLO NO. 04 KRANK MİLİ FLANŞLI KAPAK



E 71 | E 75 | E 79 | E 780 | E 786

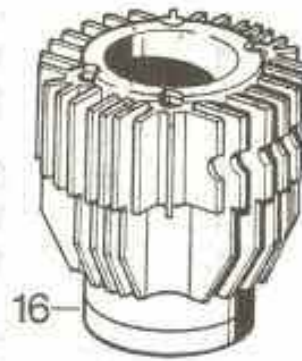
		E 71	E 75	E 79	E 780	E 786		
1	—	—	—	—	—	—		
2	031 950 00	1	1	1	1	—		
2	032 010 00	—	—	—	—	1		
3	031 951 00	1	1	1	1	1		
4	003 555 03	1	1	1	—	—		
4	003 568 02	—	—	—	1	—		
4	003 593 01	—	—	—	—	1		
5	500 479 00	1	1	1	1	1		
6	031 952 00	1	1	1	—	—	0,10 mm	
6	031 953 00	1	1	1	—	—	0,20 mm	
6	031 954 00	1	1	1	—	—	0,30 mm	
6	031 955 00	1	1	1	—	—	0,40 mm	
6	031 956 00	1	1	1	—	—	0,50 mm	
6	031 987 00	—	—	—	1	—	0,10 mm	
6	031 988 00	—	—	—	1	—	0,20 mm	
6	031 989 00	—	—	—	1	—	0,30 mm	
6	031 990 00	—	—	—	1	—	0,40 mm	
6	031 991 00	—	—	—	1	—	0,50 mm	
6	032 011 00	—	—	—	—	1	0,10 mm	
6	032 012 00	—	—	—	—	1	0,20 mm	
6	032 013 00	—	—	—	—	1	0,30 mm	
6	032 014 00	—	—	—	—	1	0,40 mm	
6	032 015 00	—	—	—	—	1	0,50 mm	
7	500 479 00	1	1	1	—	—		
7	500 481 00	—	—	—	1	—		
7	500 483 00	—	—	—	—	1		
8	030 131 02	1	1	1	—	—		
8	030 152 01	—	—	—	1	—		
8	030 186 00	—	—	—	—	1		
9	034 370 00	1	1	—	—	—		
9	030 132 02	—	—	1	—	—		
9	030 153 01	—	—	—	1	—		
9	030 187 00	—	—	—	—	1		
10	500 029 00	4	4	4	4	4	10	DIN 128
11	500 550 00	4	4	4	4	—	M 10 x 50	DIN 912-10.9

E 71 | E 75 | E 79 | E780 | E 786

	PARÇA NO.	E 71	E 75	E 79	E780	E 786	AÇIKLAMALAR
11	500 553 00	—	—	—	—	4	M 10 x 60 DIN 912-10.9
12	030 130 00	1	1	1	1	1	
13	030 066 02	1	1	1	1	1	
14	500 100 00	8	8	8	8	8	
15	031 700 01	1	1	1	1	1	
16	007 420 00	1	1	1	1	—	
16	012 132 00	—	—	—	—	1	
17	030 045 01	1	1	1	1	1	
18	030 010 01	1	1	1	1	1	
19	030 016 01	1	1	1	1	1	E
20	031 699 01	1	1	1	1	1	E
21	500 576 00	1	1	1	1	1	M 12x1,5x28 DIN 6912-10.9
22	502 229 00	1	1	1	—	—	
23	—	—	—	—	—	—	
24	400 339 00	1	1	1	—	—	
25	003 398 02	1	1	1	—	—	
26	032 799 00	3	3	3	—	—	
27	500 229 00	6	6	6	—	—	M 8 DIN 934 - 8
28	031 992 00	—	—	—	1	1	
29	—	—	—	—	—	—	
30	400 339 00	—	—	—	1	—	
30	400 341 00	—	—	—	—	1	
31	003 570 00	—	—	—	1	—	
31	003 594 00	—	—	—	—	1	
32	031 701 00	—	—	—	10	10	
33	500 229 00	—	—	—	10	10	M 8 DIN 934 - 8
34	500 178 00	1	1	1	1	—	4 x 6,5 DIN 6888
34	500 181 00	—	—	—	—	1	8 x 11 DIN 6888
35	031 986 00	1	1	1	1	—	
35	032 009 00	—	—	—	—	1	
36	032 855 00	1	1	1	1	—	
36	032 854 00	—	—	—	—	1	

TABLO NO. **05** PİSTON, BİYEL KOLU, SİLİNDİR

17 (15,16)

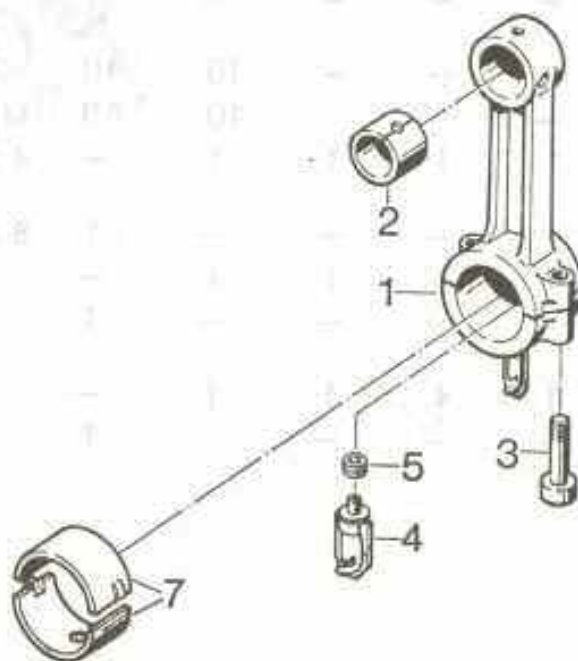


15 (8-14)



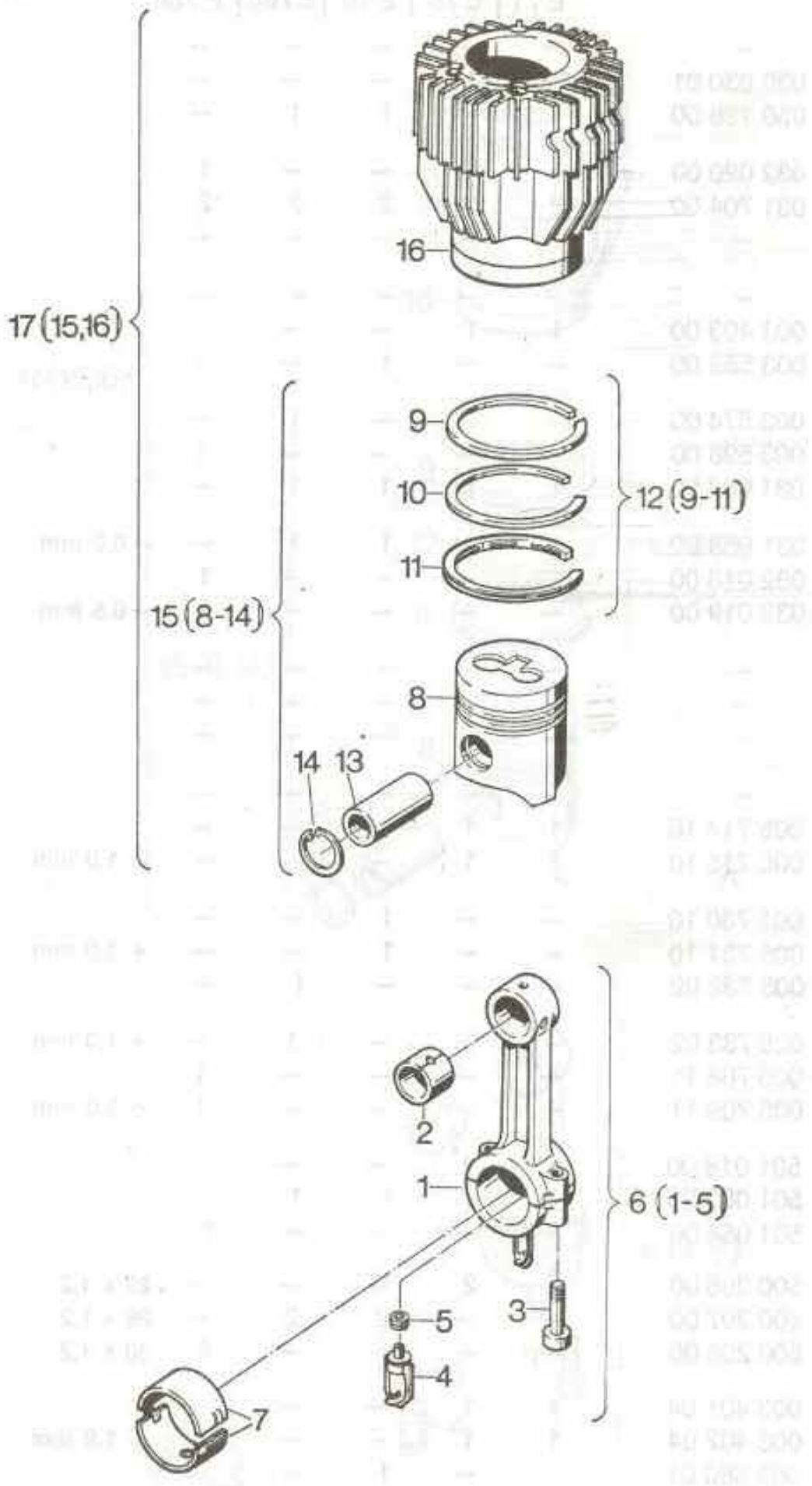
12 (9-11)

6 (1-5)



E 71 | E 75 | E 79 | E 780 | E 786

		E 71	E 75	E 79	E 780	E 786		
1	—	—	—	—	—	—		
2	030 030 01	1	1	—	—	—		
2	030 128 00	—	—	1	1	—		
2	032 020 00	—	—	—	—	1		
3	031 704 00	2	2	2	2	2		
4	—	—	—	—	—	—		
5	—	—	—	—	—	—		
6	003 403 00	1	1	—	—	—		
6	003 559 00	—	—	1	—	—		
6	003 574 00	—	—	—	1	—		
6	003 598 00	—	—	—	—	1		
7	031 957 00	1	1	1	1	—		
7	031 958 00	1	1	1	1	—	— 0,5 mm	
7	032 018 00	—	—	—	—	1		
7	032 019 00	—	—	—	—	1	— 0,5 mm	
8	—	—	—	—	—	—		
9	—	—	—	—	—	—		
10	—	—	—	—	—	—		
11	—	—	—	—	—	—		
12	005 714 10	1	1	—	—	—		
12	005 715 10	1	1	—	—	—	+ 1,0 mm	
12	005 730 10	—	—	1	—	—		
12	005 731 10	—	—	1	—	—	+ 1,0 mm	
12	005 732 02	—	—	—	1	—		
12	005 733 02	—	—	—	1	—	+ 1,0 mm	
12	005 708 11	—	—	—	—	1		
12	005 709 11	—	—	—	—	1	+ 1,0 mm	
13	501 018 00	1	1	—	—	—		
13	501 082 00	—	—	1	1	—		
13	501 064 00	—	—	—	—	1		
14	500 206 00	2	2	—	—	—	25 x 1,2	DIN 472
14	500 207 00	—	—	2	2	—	28 x 1,2	DIN 472
14	500 208 00	—	—	—	—	2	30 x 1,2	DIN 472
15	003 401 04	1	1	—	—	—		
15	003 402 04	1	1	—	—	—	+ 1,0 mm	
15	003 560 01	—	—	1	—	—		



05

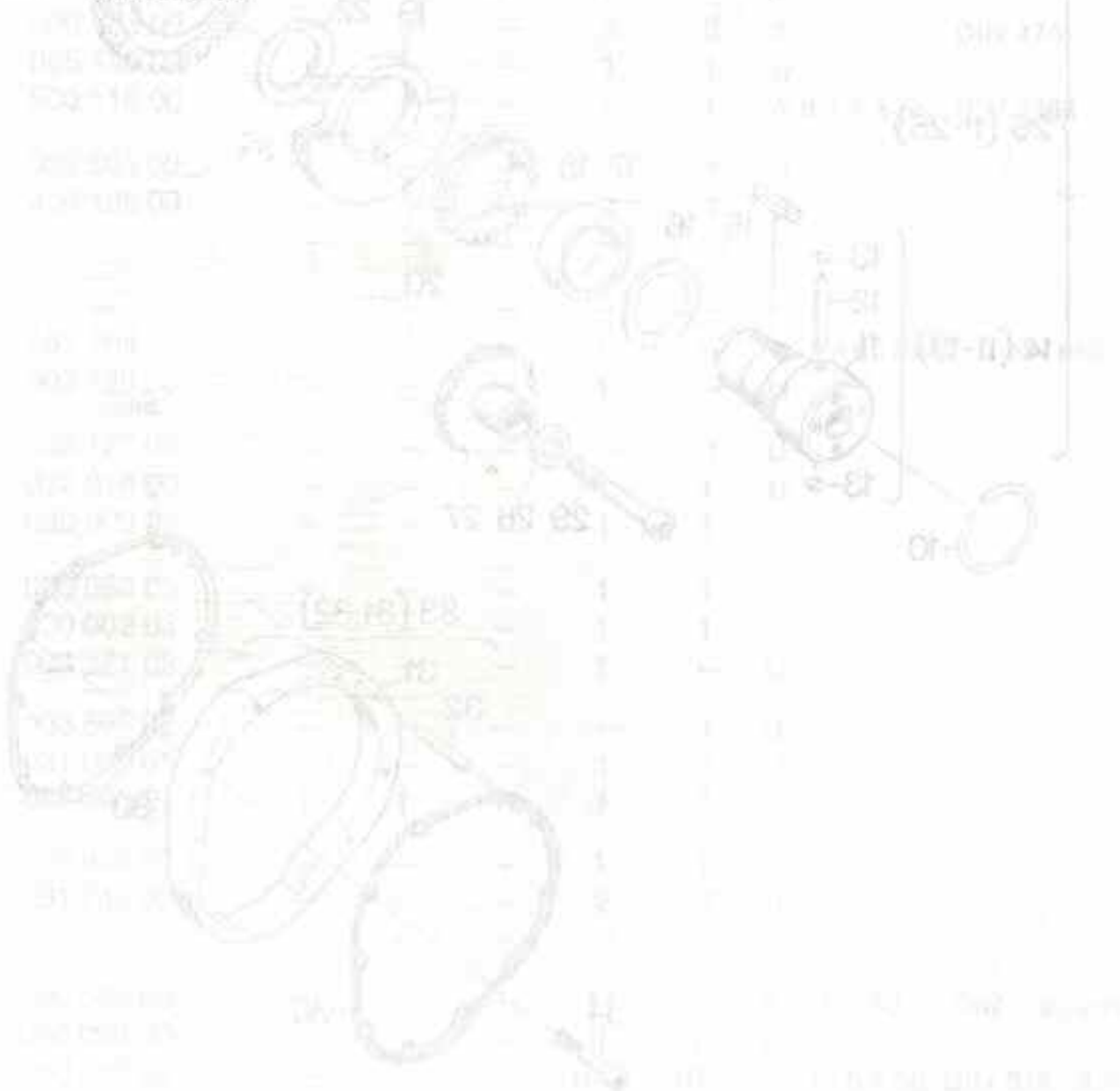
PARÇA NO.

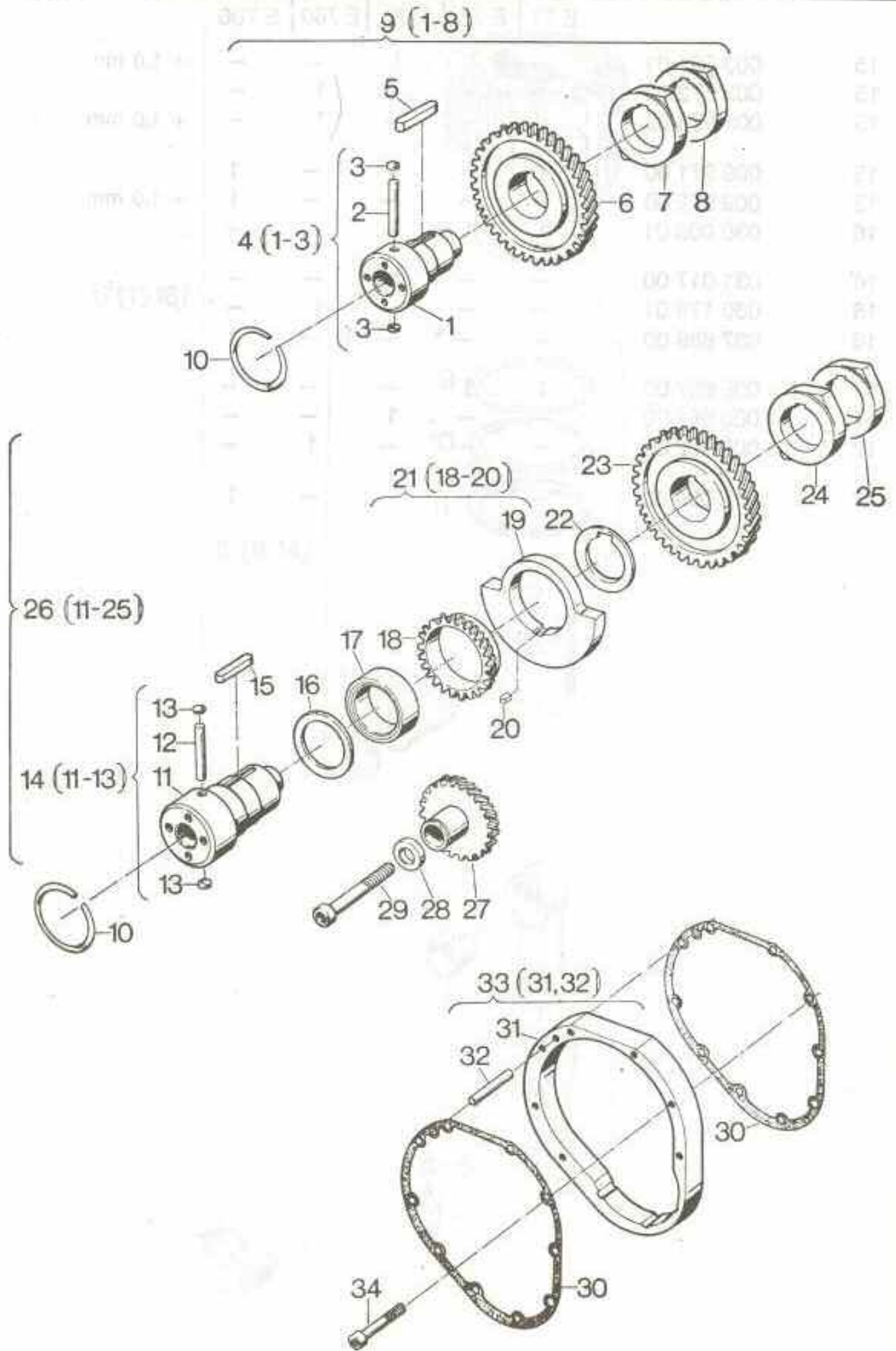
MİKTAR

AÇIKLAMALAR

E71 | E75 | E79 | E780 | E786

15	003 561 01	-	-	1	-	-	+ 1,0 mm
15	003 572 02	-	-	-	1	-	
15	003 573 02	-	-	-	1	-	+ 1,0 mm
15	009 971 00	-	-	-	-	1	
15	009 972 00	-	-	-	-	1	+ 1,0 mm
16	030 006 01	1	1	-	-	-	
16	031 017 00	-	-	1	-	-	
16	030 179 01	-	-	-	1	-	
16	037 689 00	-	-	-	-	1	
17	005 657 00	1	1	-	-	-	
17	005 661 00	-	-	1	-	-	
17	005 662 00	-	-	-	1	-	
17	012 004 00	-	-	-	-	1	

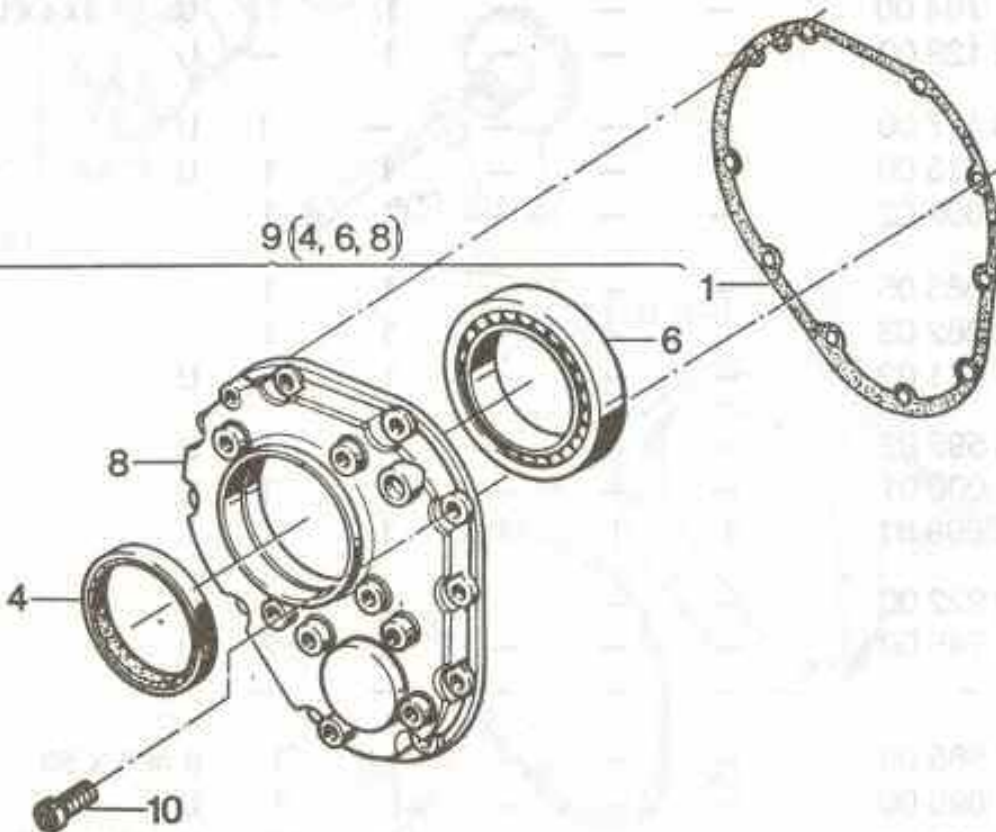
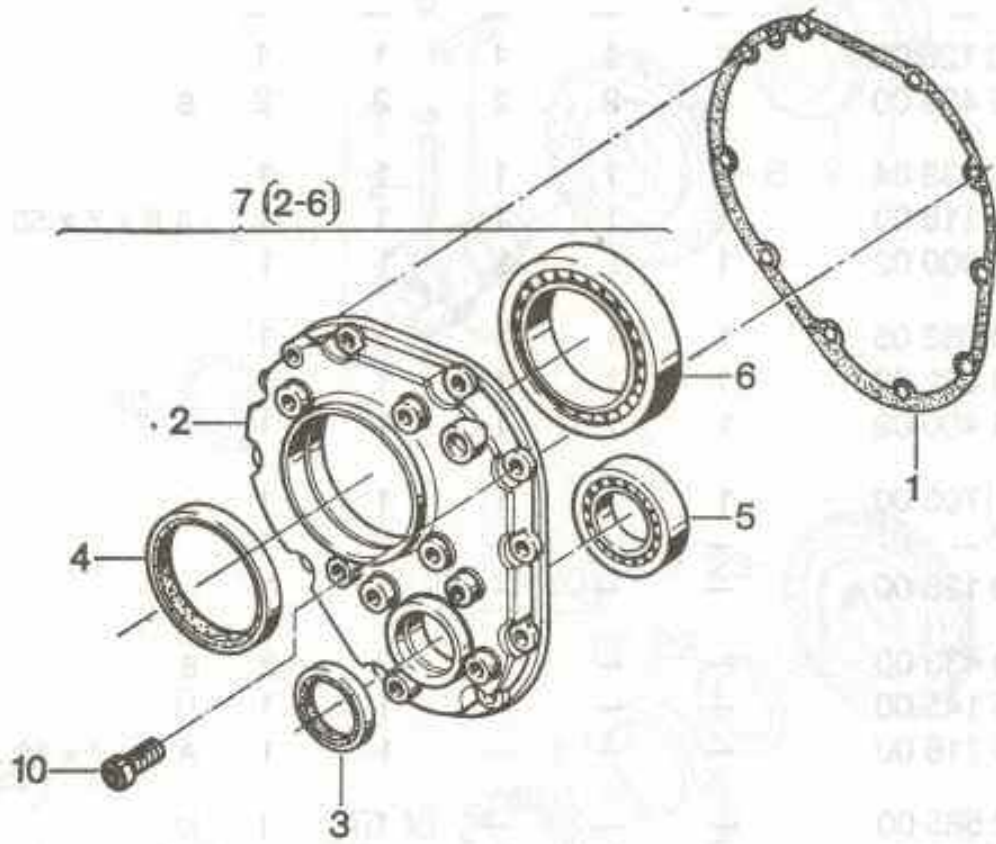




E 71 | E 75 | E 79 | E780 | E 786

	PARÇA NO.	E 71	E 75	E 79	E780	E 786		
1	—	—	—	—	—	—		
2	030 126 00	1	1	1	1	1		
3	500 433 00	2	2	2	2	2	8	DIN 470
4	004 233 04	1	1	1	1	1		
5	500 116 00	1	1	1	1	1	A 8 x 7 x 56	DIN 6885
6	030 009 02	1	1	1	1	1		
7	030 083 05	1	1	1	1	1		
8	030 082 03	1	1	1	1	1		
9	003 400 02	1	1	1	1	1		
10	031 703 00	1	1	1	1	1		
11	—	—	—	—	—	—		
12	030 126 00	—	—	—	1	1		
13	500 433 00	—	—	—	2	2	8	DIN 470
14	005 145 00	—	—	—	1	1	U	
15	500 116 00	—	—	—	1	1	A 8 x 7 x 56	DIN 6885
16	032 565 00	—	—	—	1	1	U	
17	400 196 00	—	—	—	1	1	U	
18	—	—	—	—	—	—		
19	—	—	—	—	—	—		
20	501 704 00	—	—	—	1	1	U	A6x4x12 DIN 6885
21	003 129 00	—	—	—	1	—	U	
21	003 127 00	—	—	—	—	1	U	
22	032 016 00	—	—	—	1	1	U	
23	030 009 02	—	—	—	1	1		
24	030 083 05	—	—	—	1	1		
25	030 082 03	—	—	—	1	1		
26	003 571 02	—	—	—	1	—	U	
26	003 595 02	—	—	—	—	1	U	
27	031 000 01	—	—	—	1	1	U	
28	031 699 01	1	1	1	1	1		
29	400 922 00	—	—	—	1	1	U	
30	031 745 00	—	—	—	2	2	U	
31	—	—	—	—	—	—		
32	500 586 00	—	—	—	1	1	8 m 6 x 50	DIN7-9S20k
33	004 096 00	—	—	—	1	1	U	
34	500 527 00	—	—	—	10	10	U M 8 x 50	DIN 912 - 8.8

TABLO NO. 07 ÖN KAPAK



07

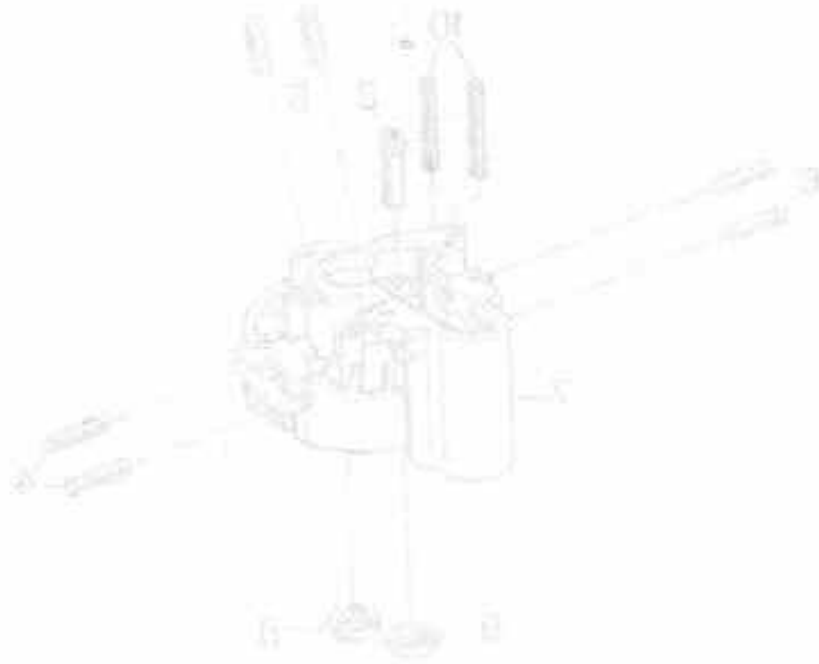
PARÇA NO.

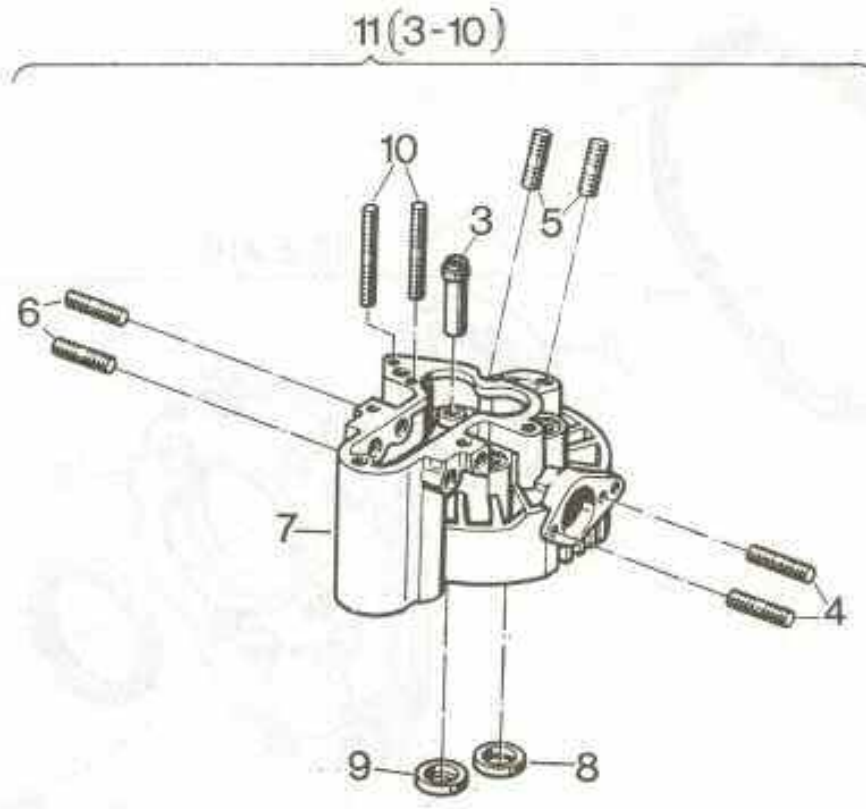
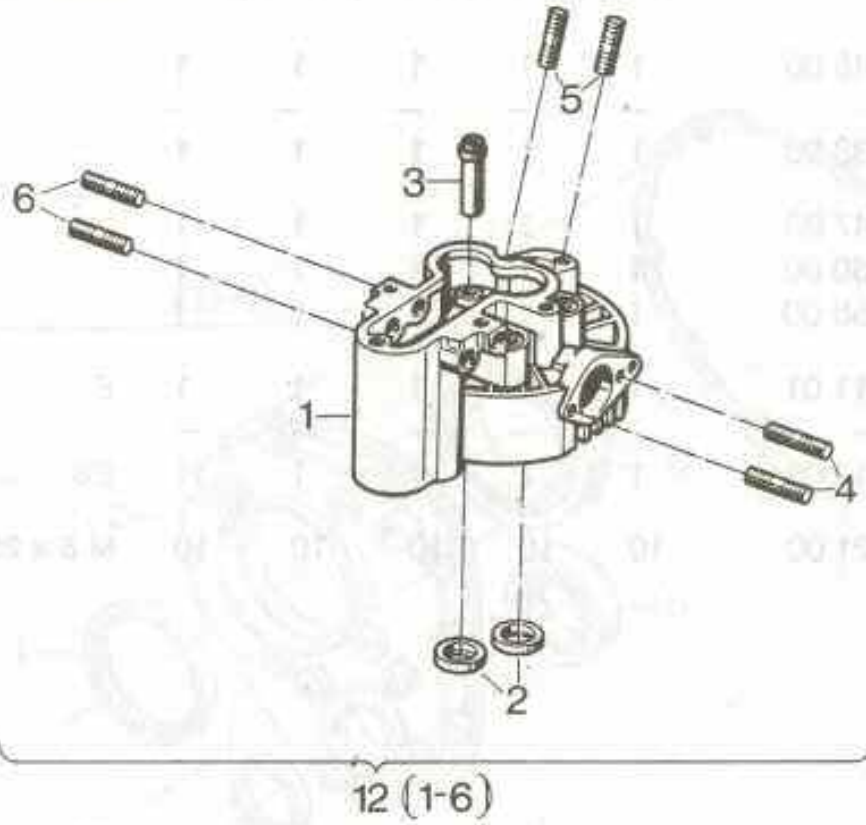
MİKTAR

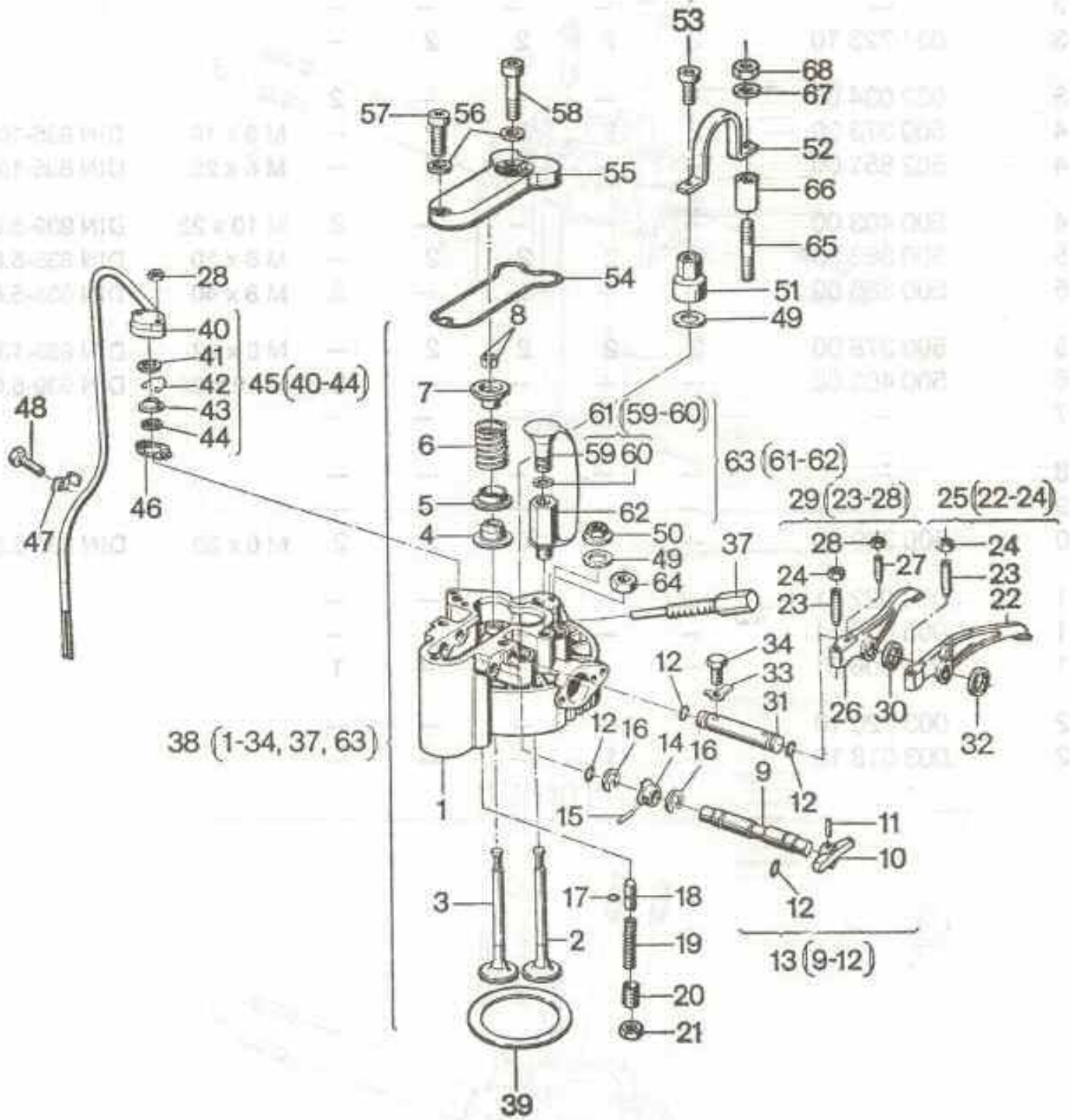
AÇIKLAMALAR

E 71 | E 75 | E 79 | E 780 | E 786

	PARÇA NO.	E 71	E 75	E 79	E 780	E 786	AÇIKLAMALAR
1	031 745 00	1	1	1	1	1	
2	-	-	-	-	-	-	
3	400 338 00	1	1	1	1	1	
4	400 347 00	1	1	1	1	1	
5	500 130 00	1	1	1	1	1	
6	500 155 00	1	1	1	1	1	
7	003 411 01	1	1	1	1	1	E
8	-	-	-	-	-	-	
9	003 413 01	1	1	1	1	1	ES
10	500 521 00	10	10	10	10	10	M 8 x 25 DIN 912 - 8.8
11							
12							
13							
14							
15							
16							
17							







E 71 | E 75 | E 79 | E 780 | E 786

		E 71	E 75	E 79	E 780	E 786		
1	003 020 10	1	—	—	—	—		
1	003 018 10	—	1	—	—	—		
1	003 022 10	—	—	1	—	—		
1	003 005 10	—	—	—	1	—		
1	012 008 01	—	—	—	—	1		
2	031 243 10	1	1	1	1	—		
2	037 659 00	—	—	—	—	1		
3	031 243 10	1	1	1	1	—		
3	030 199 10	—	—	—	—	1		
4	031 724 00	2	2	2	2	—		
4	032 032 00	—	—	—	—	2		
5	031 730 00	2	2	2	2	—		
5	032 033 00	—	—	—	—	2		
6	031 720 00	2	2	2	2	—		
6	031 587 01	—	—	—	—	2		
7	030 040 10	2	2	2	2	—		
7	030 185 10	—	—	—	—	2		
8	031 719 10	2	2	2	2	—		
8	036 209 00	—	—	—	—	2		
9	—	—	—	—	—	—		
10	031 734 01	1	1	1	1	1		
11	500 346 00	1	1	1	1	1	4 x 18	DIN 1481
12	400 223 00	4	4	4	4	4		
13	003 408 00	1	1	1	1	1		
14	030 008 01	1	1	1	1	1		
15	500 341 00	1	1	1	1	1	3 x 16	DIN 1481
16	400 502 00	2	2	2	2	2		
17	501 542 00	1	1	1	1	1		
18	030 103 00	1	1	1	1	1		
19	031 728 01	1	1	1	1	1		
20	500 050 00	1	1	1	1	—	AM 10 x 25	DIN 913-45 H
20	500 052 00	—	—	—	—	1	AM 10 x 35	DIN 913-45H
21	500 235 00	1	1	1	1	1	M 10	DIN 934 - 8

09

PARÇA NO.

MİKTAR

AÇIKLAMALAR

E 71 | E 75 | E 79 | E 780 | E 786

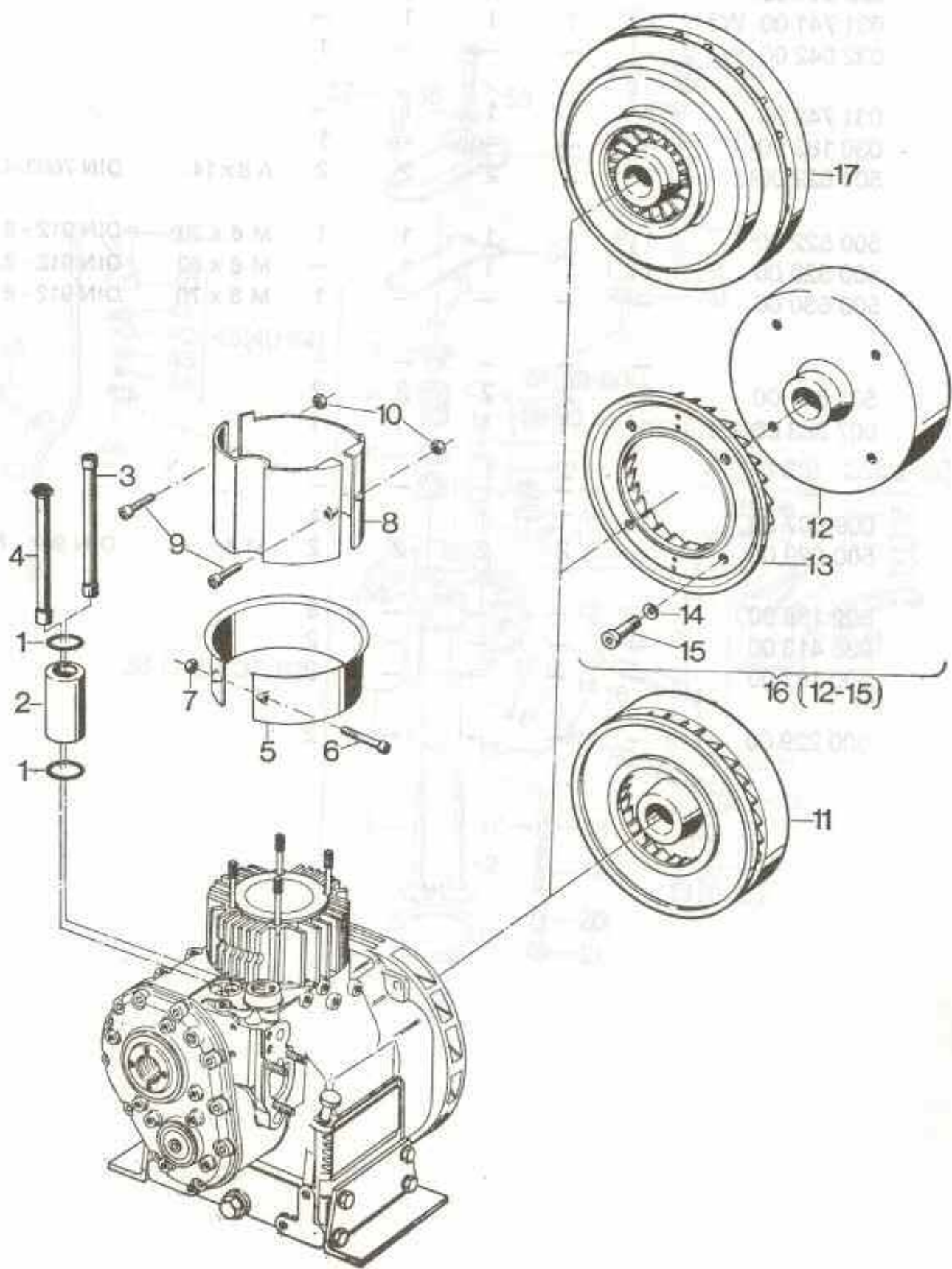
		E 71	E 75	E 79	E 780	E 786		
22	-	-	-	-	-	-		
23	030 037 00	2	2	2	2	2		
24	031 731 00	2	2	2	2	2		
25	003 405 03	1	1	1	1	1		
26	-	-	-	-	-	-		
27	030 220 01	1	1	1	1	1		
28	500 227 00	2	2	2	2	2	M 6	DIN 934 - 8
29	003 406 04	1	1	1	1	1		
30	030 344 01	-	-	-	-	1	4,0 mm	
30	034 053 00	-	-	-	-	1	4,1 mm	
30	034 007 00	-	-	-	-	1	4,2 mm	
30	034 008 00	-	-	-	-	1	4,3 mm	
31	031 721 00	1	1	1	1	1		
32	031 694 00	1	1	1	1	1	0,10 mm	
32	031 696 00	1	1	1	1	1	0,20 mm	
32	031 697 00	1	1	1	1	1	0,30 mm	
32	031 698 00	1	1	1	1	1	0,50 mm	
33	500 187 00	2	2	2	2	2	6,4*	DIN 463 - St
34	500 255 00	2	2	2	2	-	M 6 x 12	DIN 933 - 8.8
34	500 257 00	-	-	-	-	2	M 6 x 16	DIN 933 - 8.8
37	030 115 00	1	1	1	1	-		
38	004 129 01	1	-	-	-	-		
38	004 125 03	-	1	-	-	-		
38	004 130 03	-	-	1	-	-		
38	004 131 01	-	-	-	1	-		
38	009 973 01	-	-	-	-	1		
39	031 722 00	1	1	-	-	-	0,40 mm	
39	031 735 00	1	1	-	-	-	0,50 mm	
39	031 736 00	1	1	-	-	-	0,60 mm	
39	031 737 00	1	1	-	-	-	0,70 mm	
39	031 738 00	1	1	-	-	-	0,80 mm	
39	031 739 00	1	1	-	-	-	0,90 mm	
39	031 740 00	1	1	-	-	-	1,00 mm	

	PARÇA NO.	MİKTAR					AÇIKLAMALAR
		E 71	E 75	E 79	E 780	E 786	
39	031 973 00	—	—	1	1	—	0,40 mm
39	031 974 00	—	—	1	1	—	0,50 mm
39	031 975 00	—	—	1	1	—	0,60 mm
39	031 976 00	—	—	1	1	—	0,70 mm
39	031 977 00	—	—	1	1	—	0,80 mm
39	031 978 00	—	—	1	1	—	0,90 mm
39	031 979 00	—	—	1	1	—	1,00 mm
39	032 035 00	—	—	—	—	1	0,40 mm
39	032 036 00	—	—	—	—	1	0,50 mm
39	032 037 00	—	—	—	—	1	0,60 mm
39	032 038 00	—	—	—	—	1	0,70 mm
39	032 039 00	—	—	—	—	1	0,80 mm
39	032 040 00	—	—	—	—	1	0,90 mm
39	032 041 00	—	—	—	—	1	1,00 mm
40	—	—	—	—	—	—	—
41	034 443 00	—	—	1	1	1	
42	031 727 00	—	—	1	1	1	
43	031 725 00	—	—	1	1	1	
44	031 726 00	—	—	1	1	1	
45	003 563 01	—	—	1	—	—	
45	003 576 01	—	—	—	1	—	
45	003 600 01	—	—	—	—	1	
46	031 729 00	—	—	1	1	1	
47	031 972 00	—	—	1	—	—	
47	030 166 00	—	—	—	1	1	
48	500 267 00	—	—	1	1	1	M 8 x 16
49	031 717 00	4	4	4	4	4	DIN 933-8.8
50	031 718 00	2	2	2	2	—	
50	031 830 00	—	—	—	—	2	
51	034 580 00	2	2	2	2	—	
51	031 873 00	—	—	—	—	2	
52	037 569 00	1	1	1	1	—	
52	037 568 00	—	—	—	—	1	

E 71 | E 75 | E 79 | E 780 | E 786

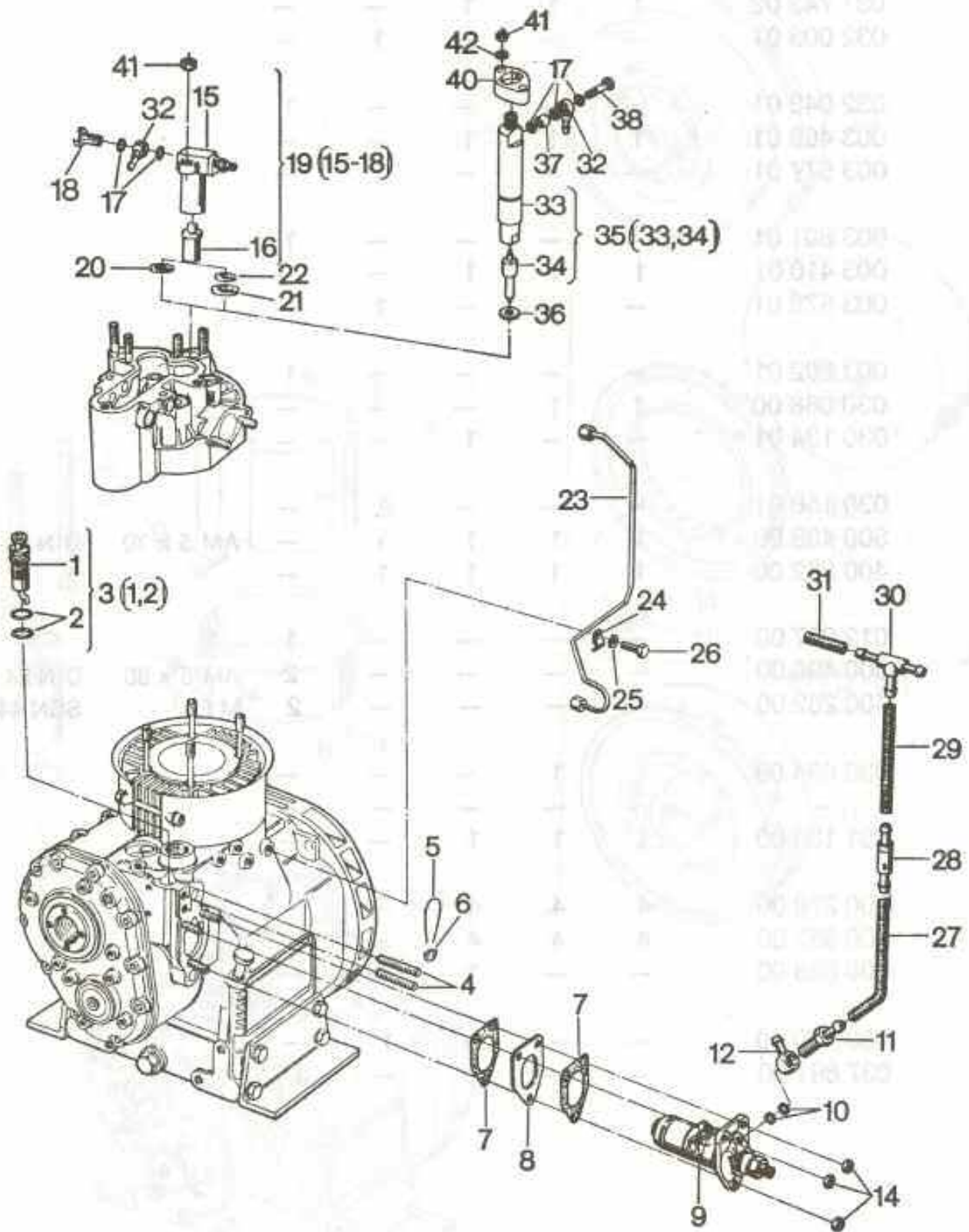
		E 71	E 75	E 79	E 780	E 786		
53	500 514 00	2	2	2	2	—	M 8 x 12	DIN 912 - 8.8
54	031 741 00 W3	1	1	1	1	—		
54	032 042 00 W3	—	—	—	—	1		
55	031 742 00	1	1	1	1	—		
55	030 183 00	—	—	—	—	1		
56	501 629 00	2	2	2	2	2	A 8 x 14	DIN 7603 - Cu
57	500 522 00	1	1	1	1	1	M 8 x 30	DIN 912 - 8.8
58	500 529 00	1	1	1	1	—	M 8 x 60	DIN 912 - 8.8
58	500 530 00	—	—	—	—	1	M 8 x 70	DIN 912 - 8.8
59	—	—	—	—	—	—		
60	501 541 00	2	2	2	2	2		
61	007 363 00 P1	1	1	1	1	1		
62	—	—	—	—	—	—		
63	009 507 00	1	1	1	1	1		
64	500 229 00	2	2	2	2	2	M 8	DIN 934 - 8
65	502 186 00	—	—	—	—	2		
66	036 413 00	—	—	—	—	2		
67	500 167 00	—	—	—	—	2		
68	500 229 00	—	—	—	—	2		

TABLO NO. 10 VOLAN, TIJ GRUBU



E 71 | E 75 | E 79 | E 780 | E 786

	PARÇA NO.	E 71	E 75	E 79	E 780	E 786	AÇIKLAMALAR
1	400 232 00	2	2	2	2	2	
2	031 743 02	1	1	1	-	-	
2	032 003 01	-	-	-	1	-	
2	032 043 01	-	-	-	-	1	
3	003 409 01	1	1	1	-	-	
3	003 577 01	-	-	-	1	-	
3	003 601 01	-	-	-	-	1	
4	003 410 01	1	1	1	-	-	
4	003 578 01	-	-	-	1	-	
4	003 602 01	-	-	-	-	1	
5	030 068 00	1	1	-	-	-	
5	030 134 01	-	-	1	-	-	
5	030 158 01	-	-	-	1	-	
6	500 498 00	1	1	1	1	-	AM 5 x 70 DIN 84-4.8
7	400 282 00	1	1	1	1	-	
8	012 017 00	-	-	-	-	1	
9	500 496 00	-	-	-	-	2	AM 5 x 60 DIN 84-4.8
10	400 282 00	-	-	-	-	2	M 5 SSN 440-8 Cu
11	030 094 03	1	1	-	-	-	
12	-	-	-	-	-	-	
13	031 130 00	1	1	1	-	-	
14	400 278 00	4	4	4	-	-	
15	400 357 00	4	4	4	-	-	
16	009 085 00	-	-	1	-	-	
17	030 170 10	-	-	-	1	-	
17	037 691 00	-	-	-	-	1	

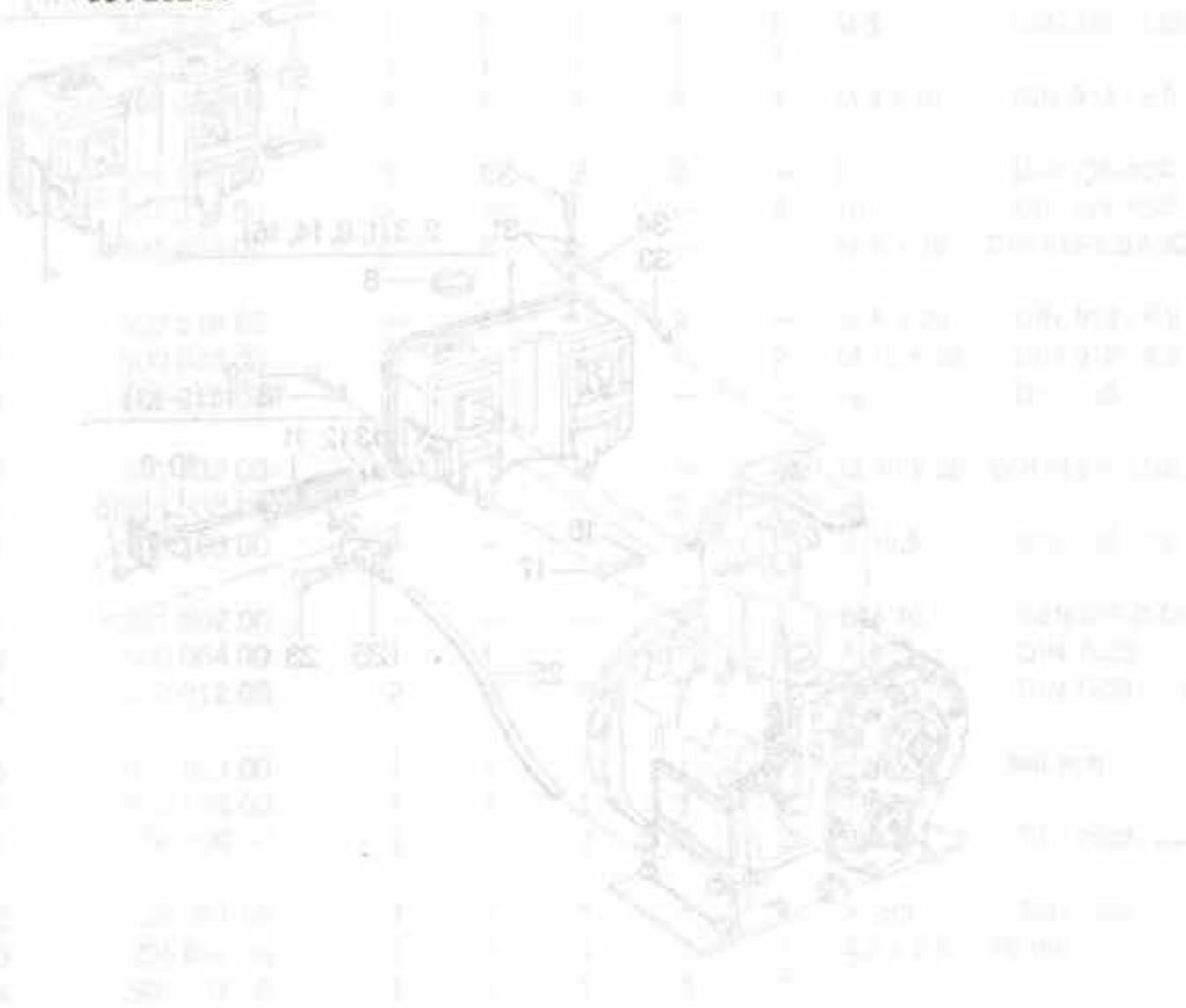


E 71 | E 75 | E 79 | E 780 | E 786

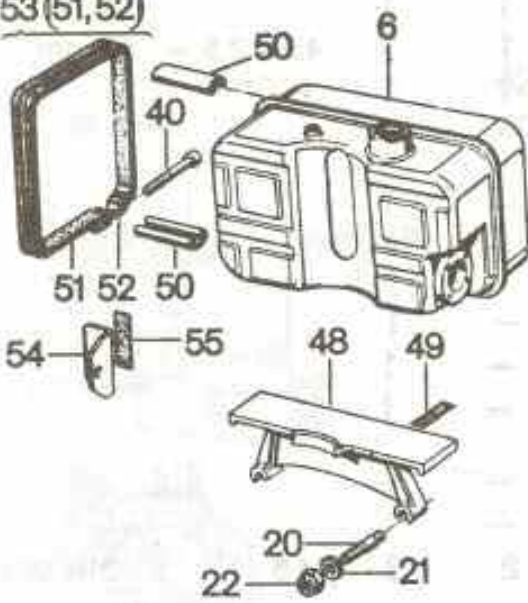
		E 71	E 75	E 79	E 780	E 786	
1	-	-	-	-	-	-	
2	400 229 00	2	2	2	2	2	
3	003 416 01	1	1	1	1	1	
4	031 746 00	2	2	2	2	2	
5	400 215 00	1	1	1	1	1	
6	400 214 00	1	1	1	1	1	
7	031 684 00	2	2	2	2	2	
8	031 683 02	1	1	1	1	1	0,15 mm
8	031 685 01	1	1	1	1	1	0,20 mm
8	031 686 01	1	1	1	1	1	0,25 mm
8	031 687 01	1	1	1	1	1	0,30 mm
9	400 052 01	1	1	1	-	-	
9	400 369 01	-	-	-	1	-	
9	502 571 10	-	-	-	-	1	
10	500 011 00	2	2	2	2	2	A 12 x 15,5 DIN 7603-Cu
11	036 623 00	1	1	1	1	1	
12	500 158 00	1	1	1	1	1	
14	500 229 00	3	3	3	3	3	M 8 DIN 934 - 8
15	-	-	-	-	-	-	
16	400 046 00 P1	1	1	1	1	-	
17	500 009 00	2	2	2	2	3	A 8 x 11,5 DIN 7603-C
18	500 061 00	1	1	1	1	-	A 2/3 DIN 7623
19	400 067 00	1	1	-	-	-	
19	400 068 00	-	-	1	1	-	
20	031 605 00	1	1	-	-	-	
21	030 129 00	-	-	1	1	-	
22	400 030 00	-	-	1	1	-	
23	003 417 01	1	1	1	-	-	
23	003 579 00	-	-	-	1	-	
23	009 974 00	-	-	-	-	1	
24	031 747 00	1	1	1	1	1	
25	500 028 00	1	1	1	1	1	
26	500 267 00	1	1	1	1	1	M 8 x 16 DIN 933 - 8.8
27	036 637 00	1	1	1	1	1	4,5 x 2,5 - 50 mm
28	008 055 00 P1	1	1	1	1	1	
29	038 068 00	1	1	1	1	1	4,5 x 2,5 - 380 mm

E 71 | E 75 | E 79 | E 780 | E 786

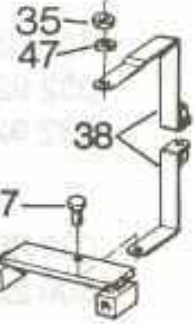
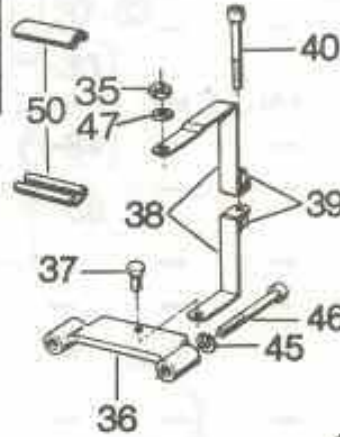
		E 71	E 75	E 79	E 780	E 786		
30	501 578 00	1	1	1	1	1		
31	036 637 00	1	1	1	1	1	4,5 x 2,5 -	50 mm
32	500 157 00	1	1	1	1	1		
33	-	-	-	-	-	-		
34	502 576 10 P1	-	-	-	-	1		
35	502 572 10	-	-	-	-	1		
36	400 850 00	-	-	-	-	1		
37	032 929 00	-	-	-	-	1		
38	032 928 00	-	-	-	-	1		
39	-	-	-	-	-	-		
40	032 850 00	-	-	-	-	1		
41	500 229 00	2	2	2	2	2	M 8	DIN 934-8
42	501 282 00	-	-	-	-	2	8	DIN 127



53 (51, 52)



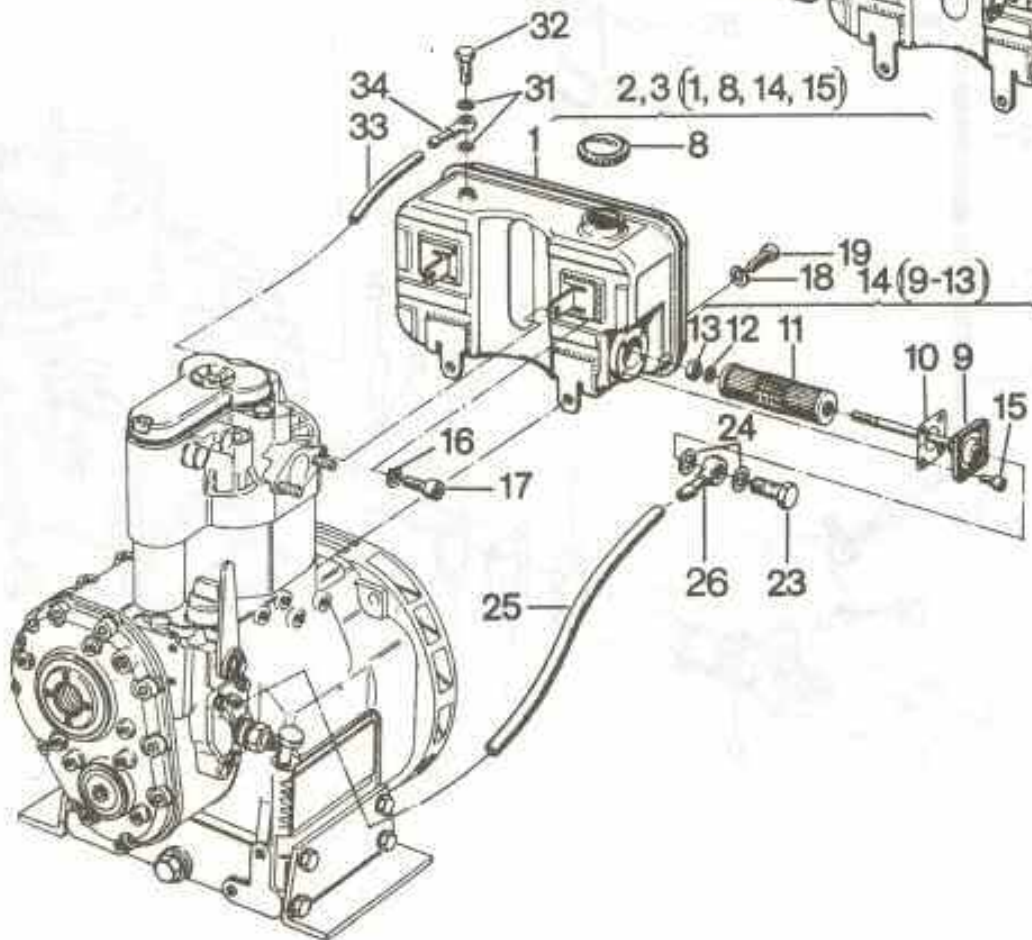
7 (6, 8, 14, 15)



5 (4, 8, 14, 15)



2, 3 (1, 8, 14, 15)



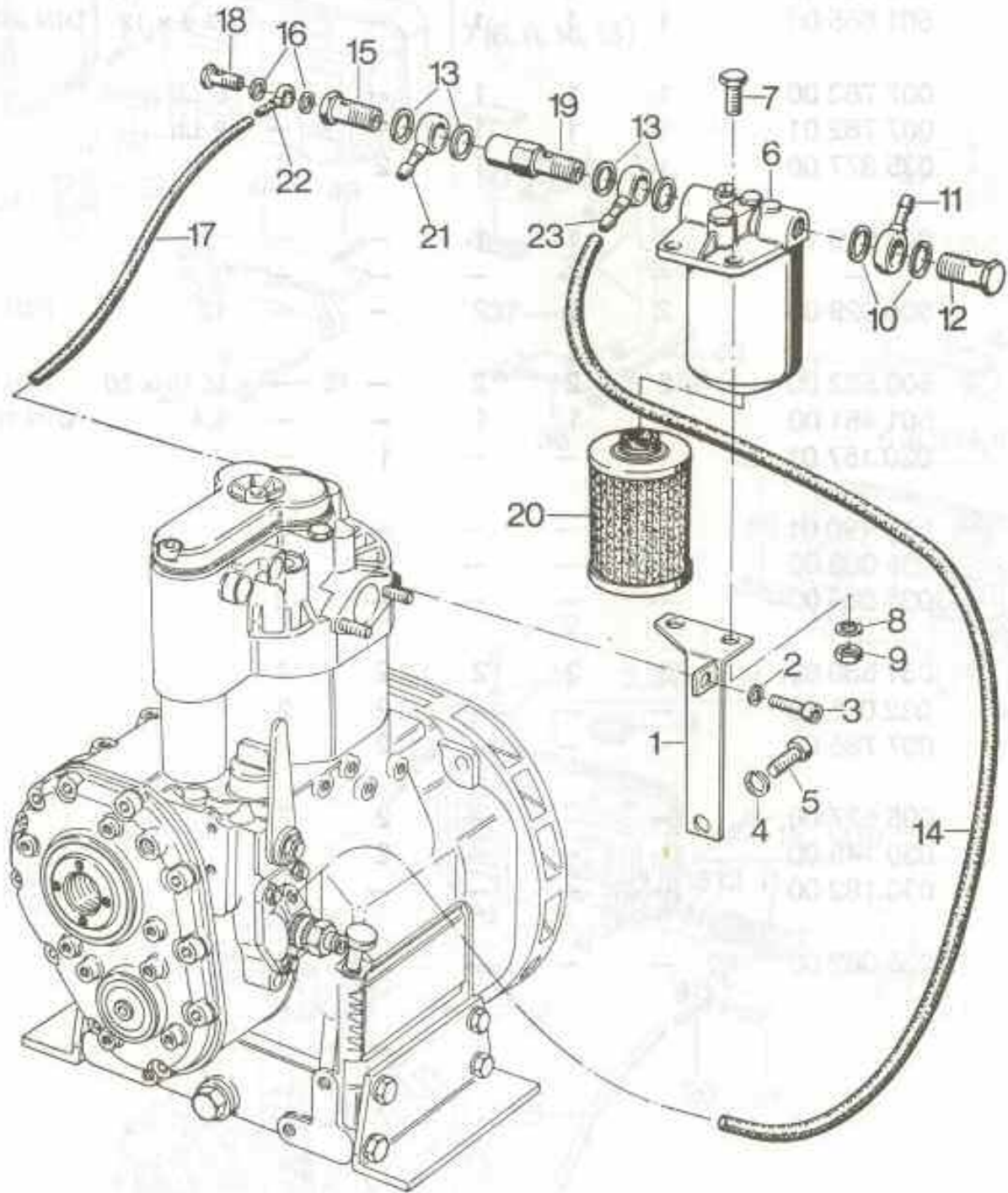
E 71 | E 75 | E 79 | E 780 | E 786

		E 71	E 75	E 79	E 780	E 786		
1	-	-	-	-	-	-		
2	004 126 00	1	1	1	-	-	5 Ltr.	
3	004 127 00	1	1	1	-	-	9 Ltr.	
4	-	-	-	-	-	-		
5	004 128 00	1	1	1	-	-	5 Ltr.	
6	-	-	-	-	-	-		
7	004 132 00	-	-	-	1	1	9 Ltr.	
8	400 327 00 P1	1	1	1	1	1		
9	-	-	-	-	-	-		
10	031 502 01 W2	1	1	1	1	1		
11	400 438 00 W2	1	1	1	1	1		
12	031 506 00	1	1	1	1	1		
13	400 835 00	1	1	1	1	1	M 8	SSN003-04 Zn
14	003 291 02	1	1	1	1	1		
15	500 627 00	4	4	4	4	4	M 6 x 10	DIN 912 - 8.8
16	502 085 00	2	2	2	2	-	8	DIN 128-A3C
16	501 356 00	-	-	-	-	2	10	DIN 128-A3C
17	501 654 00	2	2	2	-	-	M 8 x 16	DIN 912-8.8 A3C
17	500 519 00	-	-	-	2	-	M 8 x 20	DIN 912 - 8.8
17	500 538 00	-	-	-	-	2	M 10 x 25	DIN 912 - 8.8
18	500 029 00	2	2	2	-	-	10	DIN 128
19	501 732 00	2	2	2	-	-	M 10 x 20	DIN 912-8.8 A3C
20	501 803 00	-	-	-	2	2		
21	500 169 00	-	-	-	2	2	B 10,5	DIN 125 - St
22	501 802 00	-	-	-	2	2	BM 10	SSN 001-8 Zn
23	500 064 00	1	1	1	1	1	A 8	DIN 7623
24	500 012 00	2	2	2	2	2	A 14 x 18	DIN 7603-Cu
25	036 934 00	1	1	1	1	1	7,00 x 2,5 - 360 mm	
26	500 159 00	1	1	1	1	1		
31	500 009 00	2	2	2	2	2	A 8 x 11,5	DIN 7603-Cu
32	500 061 00	1	1	1	1	1	A 2/3	DIN 7623
33	036 637 00	1	1	1	1	1	4,5 x 2,5 - 50 mm	
34	500 157 00	1	1	1	1	1		

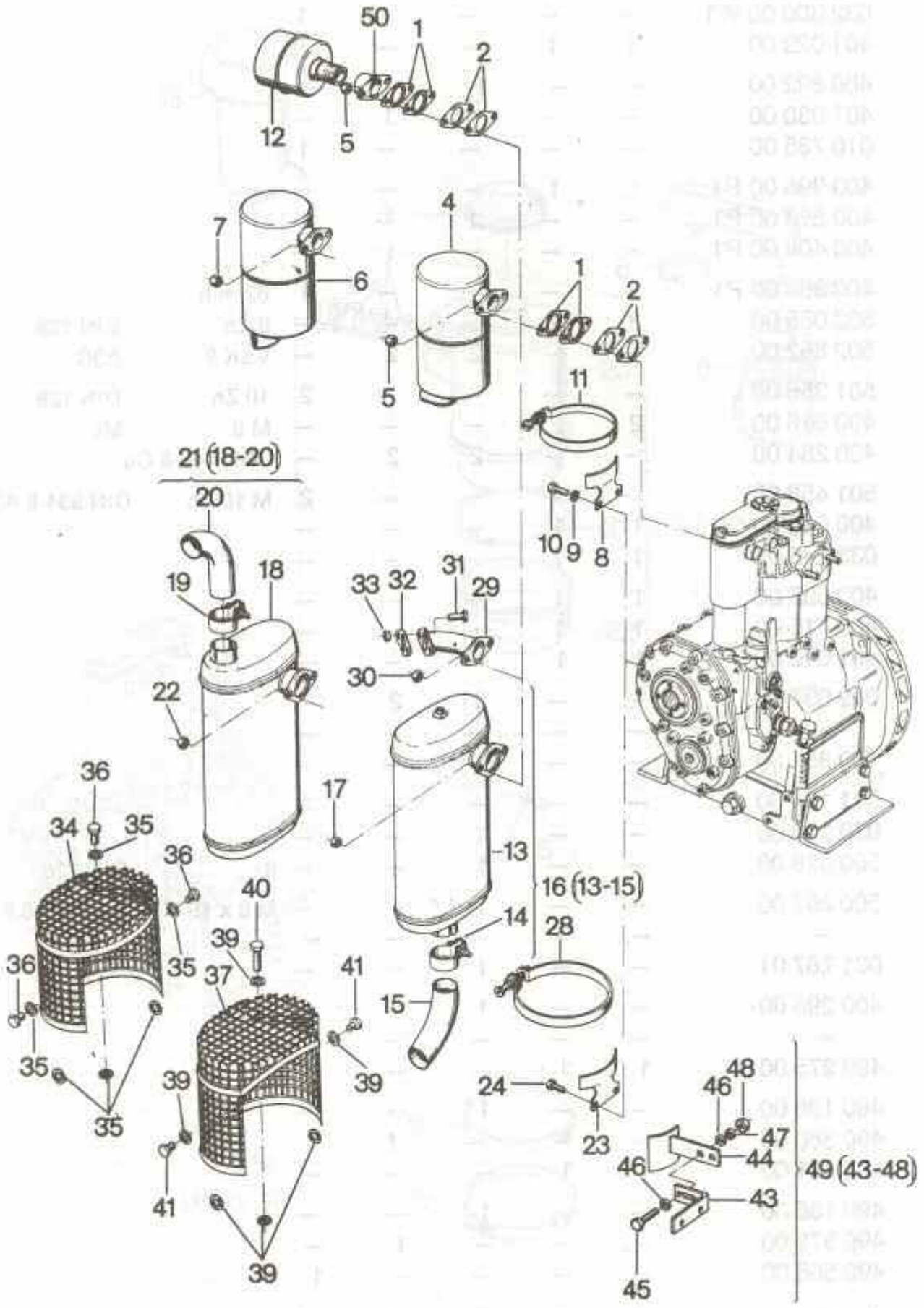
E 71 | E 75 | E 79 | E 780 | E 786

		E 71	E 75	E 79	E 780	E 786		
35	501 480 00	1	1	1	—	—	M 8	DIN 934-8 A3C
36	030 063 10	1	1	1	—	—		
37	501 655 00	1	1	1	—	—	M 6 x 12	DIN 933-8.8 A3C
38	007 783 00	1	1	1	—	—	5 Ltr.	
39	007 782 01	1	1	1	—	—	9 Ltr.	
40	035 377 00	1	1	1	2	2		
43	003 076 10	1	1	1	—	—		
44	—	—	—	—	—	—		
45	500 029 00	2	2	2	—	—	10	DIN 128
46	500 552 00	2	2	2	—	—	M 10 x 60	DIN 912 - 8.8
47	501 481 00	1	1	1	—	—	8,4	DIN 125-St A3C
48	030 157 01	—	—	—	1	—		
48	030 190 01	—	—	—	—	1		
49	035 063 00	—	—	—	2	—		
49	035 064 00	—	—	—	—	2		
50	031 886 00	2	2	2	2	4		
51	032 005 00	—	—	—	2	2		
52	007 785 00	—	—	—	2	2		
53	005 627 00	—	—	—	2	2		
54	030 148 00	—	—	—	2	—		
54	030 182 00	—	—	—	—	2		
55	035 062 00	—	—	—	2	2		

TABLO NO. 13 YAKIT FİLTRESİ



	PARÇA NO.	MİKTAR					AÇIKLAMALAR
		E 71	E 75	E 79	E 780	E 786	
1	006 211 00	1	1	1	-	-	
1	004 202 00	-	-	-	1	-	
1	004 203 00	-	-	-	-	1	
2	500 028 00	1	1	1	1	-	8 DIN 128
2	500 029 00	-	-	-	-	1	10 DIN 128
3	500 519 00	1	1	1	1	1	M 8 x 20 DIN 912 - 8.8
3	500 291 00	-	-	-	-	1	M 10 x 20 DIN 933 - 8.8
4	500 029 00	1	1	1	1	1	10 DIN 128
5	500 536 00	-	-	-	-	1	M 10 x 20 DIN 912 - 8.8
5	500 291 00	1	1	1	1	1	M 10 x 20 DIN 933 - 8.8
6	400 674 00	1	1	1	1	1	
7	500 293 00	2	2	2	2	2	M 10 x 30 DIN 933 - 8.8
8	500 029 00	2	2	2	2	2	10 DIN 128
9	500 235 00	2	2	2	2	2	M 10 DIN 934 - 8
10	500 012 00	2	2	2	2	2	A 14 x 18 DIN 7603-Cu
11	500 159 00	1	1	1	1	1	
12	500 064 00	1	1	1	1	1	A 8 DIN 7623
13	500 012 00	4	4	4	4	4	A 14 x 18 DIN 7603-Cu
14	036 732 00	1	1	1	-	-	7,0 x 2,5 - 470 mm
14	036 742 00	-	-	-	1	1	7,0 x 2,5 - 550 mm
15	032 807 00	1	1	1	1	1	
16	500 009 00	2	2	2	2	2	A 8 x 11,5 DIN 7603-Cu
17	036 637 00	1	1	1	-	-	4,5 x 2,5 - 50 mm
17	036 731 00	-	-	-	1	1	4,5 x 2,5 - 65 mm
18	500 061 00	1	1	1	1	1	A 2/3 DIN 7623
19	034 977 00	1	1	1	1	1	
20	400 073 00	1	1	1	1	1	
21	501 517 00	1	1	1	1	1	
22	500 157 00	1	1	1	1	1	
23	500 159 00	1	1	1	1	1	

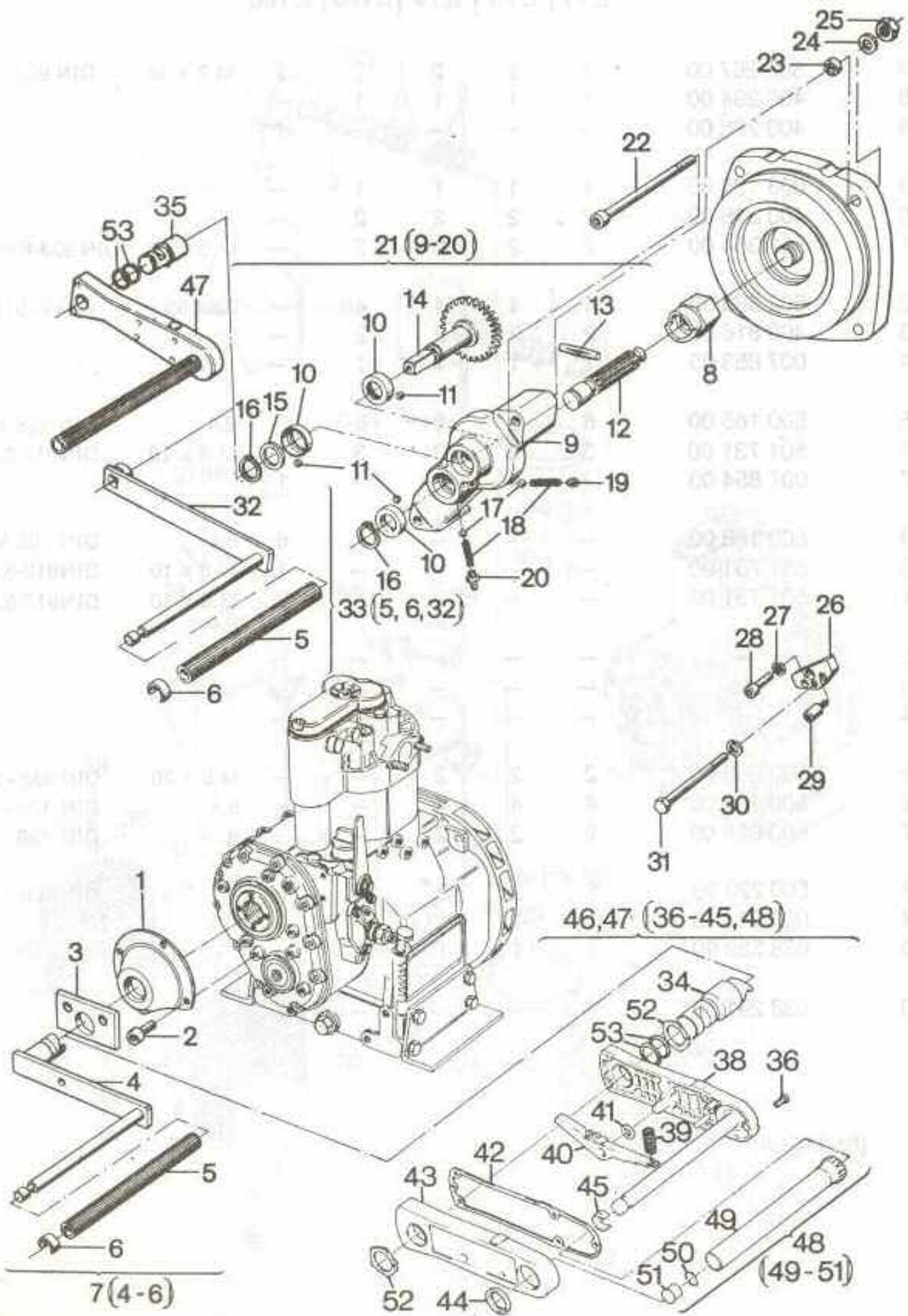


E 71 | E 75 | E 79 | E 780 | E 786

		E 71	E 75	E 79	E 780	E 786		
1	039 157 00	2	2	2	2	—		
1	500 023 00	—	—	—	—	1		
2	502 868 00	2	2	2	2	—	32 x 53	DIN 71511
3	—	—	—	—	—	—		
4	008 599 00	1	1	1	—	—		
5	500 230 00	2	2	2	2	—	M 8	Ms DIN 934
5	500 237 00	—	—	—	—	2	M 10	DIN 934-Ms
6	008 600 00	1	1	1	—	—		
7	400 816 00	2	2	2	—	—	M 8	Ms
8	030 783 00	1	1	1	—	—		
9	500 028 00	2	2	2	—	—	8	DIN 128
10	500 267 00	2	2	2	—	—	M 8 x 16	DIN 933 - 8.8
11	400 290 00	1	1	1	—	—		
12	008 722 00	1	1	1	1	1		
13	—	—	—	—	—	—		
14	037 271 00	1	1	1	1	1		
15	037 272 00	1	1	1	1	—		
15	037 407 00	—	—	—	—	1		
16	008 593 00	1	1	1	1	—		
16	008 579 00	—	—	—	—	1		
17	400 816 00	2	2	2	2	—		
17	500 237 00	—	—	—	—	2	M 10 Ms	DIN 934 Ms
18	—	—	—	—	—	—		
19	037 271 00	1	1	1	1	1		
20	037 272 00	1	1	1	1	—		
20	037 407 00	—	—	—	—	1		
21	008 622 00	1	1	1	1	—		
21	008 578 00	—	—	—	—	1		
22	400 816 00	2	2	2	2	—		
22	500 237 00	—	—	—	—	2	M 10 Ms	DIN 934 Ms
23	030 051 01	1	1	1	—	—		
23	030 156 00	—	—	—	1	—		
23	030 668 00	—	—	—	—	1		

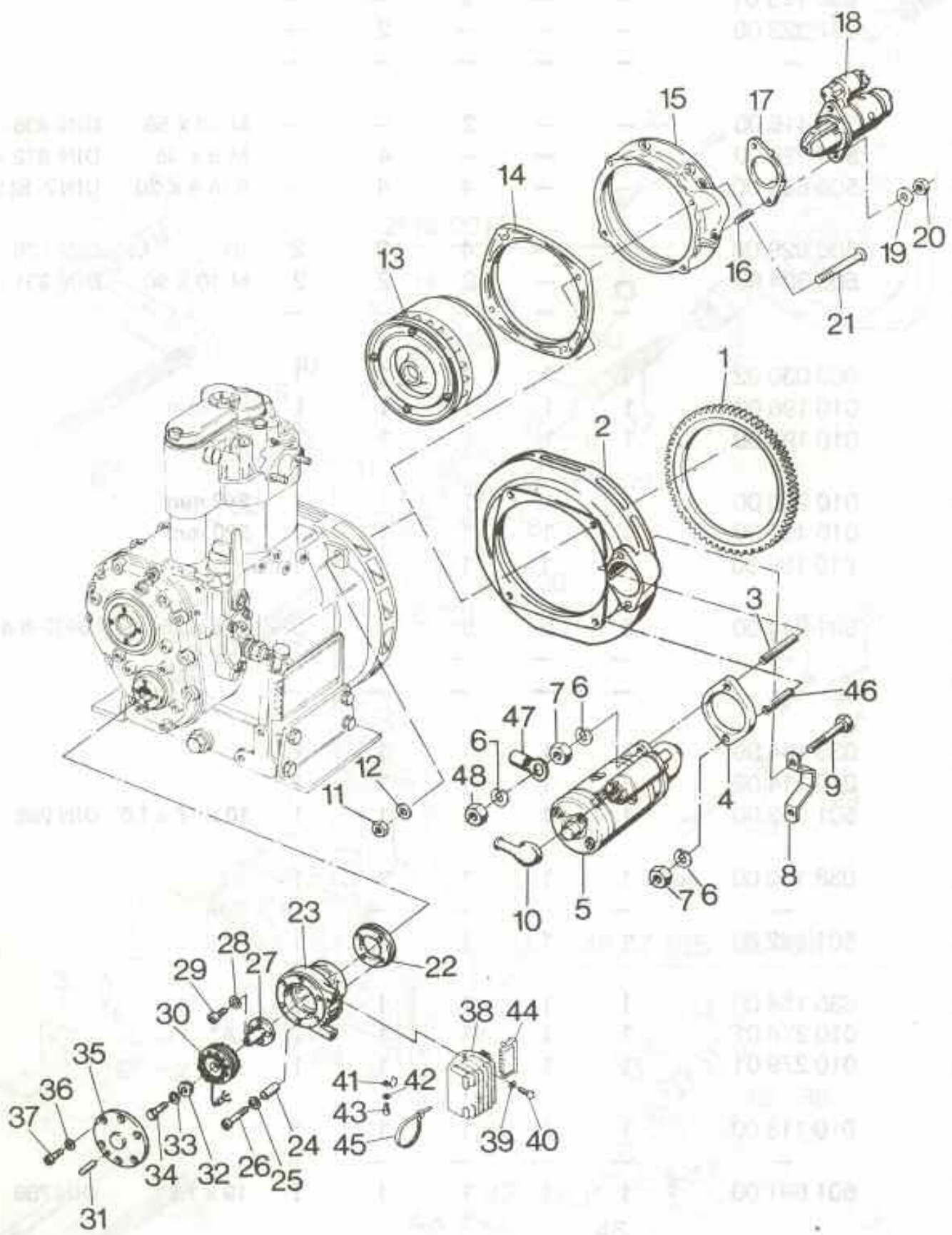
E 71 | E 75 | E 79 | E 780 | E 786

		E 71	E 75	E 79	E 780	E 786		
24	500 267 00	2	2	2	2	2	M 8 x 16	DIN 933 - 8.8
28	400 294 00	1	1	1	1	—		
28	400 296 00	—	—	—	—	1		
29	003 125 00	1	1	1	1	—		
30	400 816 00	2	2	2	2	—		
31	501 354 00	2	2	2	2	—	M 8 x 20	DIN 933-8.8 A3C
32	502 868 00	4	4	4	4	—	32 x 53	DIN 71511
33	400 816 00	2	2	2	2	—		
34	007 853 00	1	1	1	1	—		
35	500 168 00	6	6	6	6	—	8,4	DIN 125 Ms
36	501 731 00	3	3	3	3	—	M 8 x 10	DIN912-8.8Zn
37	007 854 00	—	—	—	—	1		
39	500 168 00	—	—	—	—	6	8,4	DIN 125 Ms
40	501 731 00	—	—	—	—	1	M 8 x 10	DIN912-8.8Zn
41	501 731 00	—	—	—	—	2	M 8 x 10	DIN912-8.8Zn
42	—	—	—	—	—	—		
43	—	—	—	—	—	—		
44	—	—	—	—	—	—		
45	500 268 00	2	2	2	—	—	M 8 x 20	DIN 933 - 8.8
46	500 167 00	4	4	4	—	—	8,4	DIN 125 - St
47	500 028 00	2	2	2	—	—	8	DIN 128
48	500 229 00	2	2	2	—	—	8	DIN 934 - 8
49	003 144 10	1	1	1	—	—		
50	038 289 00	1	1	1	1	—		
50	038 291 00	—	—	—	—	1		



	PARÇA NO.	MİKTAR					AÇIKLAMALAR	
		E 71	E 75	E 79	E 780	E 786		
1	033 827 00	1	1	1	1	1		
2	501 654 00	4	4	4	4	4	M 8 x 16	DIN 912-A3C
3	030 107 00	1	1	1	1	1		
4	-	-	-	-	-	-		
5	035 224 00	1	1	1	1	1		
6	035 154 00	1	1	1	1	1		
7	003 019 02	1	1	1	1	1	50 mm	
7	003 033 02	1	1	1	1	1	77 mm	
7	003 032 02	1	1	1	1	1	122 mm	
7	003 015 00	1	1	1	1	1	177 mm	
7	003 031 02	1	1	1	1	1	242 mm	
7	008 637 00	1	1	1	1	1	320 mm	
8	030 074 01	1	1	1	-	-		
8	037 324 00	-	-	-	1	-		
8	030 669 00	-	-	-	-	1		
9	-	-	-	-	-	-		
10	031 753 01	3	3	3	3	3		
11	500 098 00	45	45	45	45	45		
12	030 085 00	1	1	1	1	1		
13	500 095 00	1	1	1	1	1	8 x 45	DIN 1475
14	030 113 00	1	1	1	1	1		
15	030 124 01	1	1	1	1	1		
16	500 204 00	2	2	2	2	2	24 x 1,2	DIN 471
17	500 098 00	2	2	2	2	2		
18	031 591 00	2	2	2	2	2		
19	030 794 00	1	1	1	1	1		
20	500 078 00	1	1	1	1	1	AM 8 x 1	DIN 71412
21	003 419 03	1	1	-	-	-		
21	003 356 02	-	-	1	1	1		
22	500 559 00	2	2	-	-	-	M 10 x 120	DIN 912 - 8.8
23	031 754 00	2	2	2	-	-		
24	500 169 00	2	2	4	-	-	B 10,5	DIN 125 - St
25	500 235 00	2	2	2	-	-	M 10	DIN 934 - 8

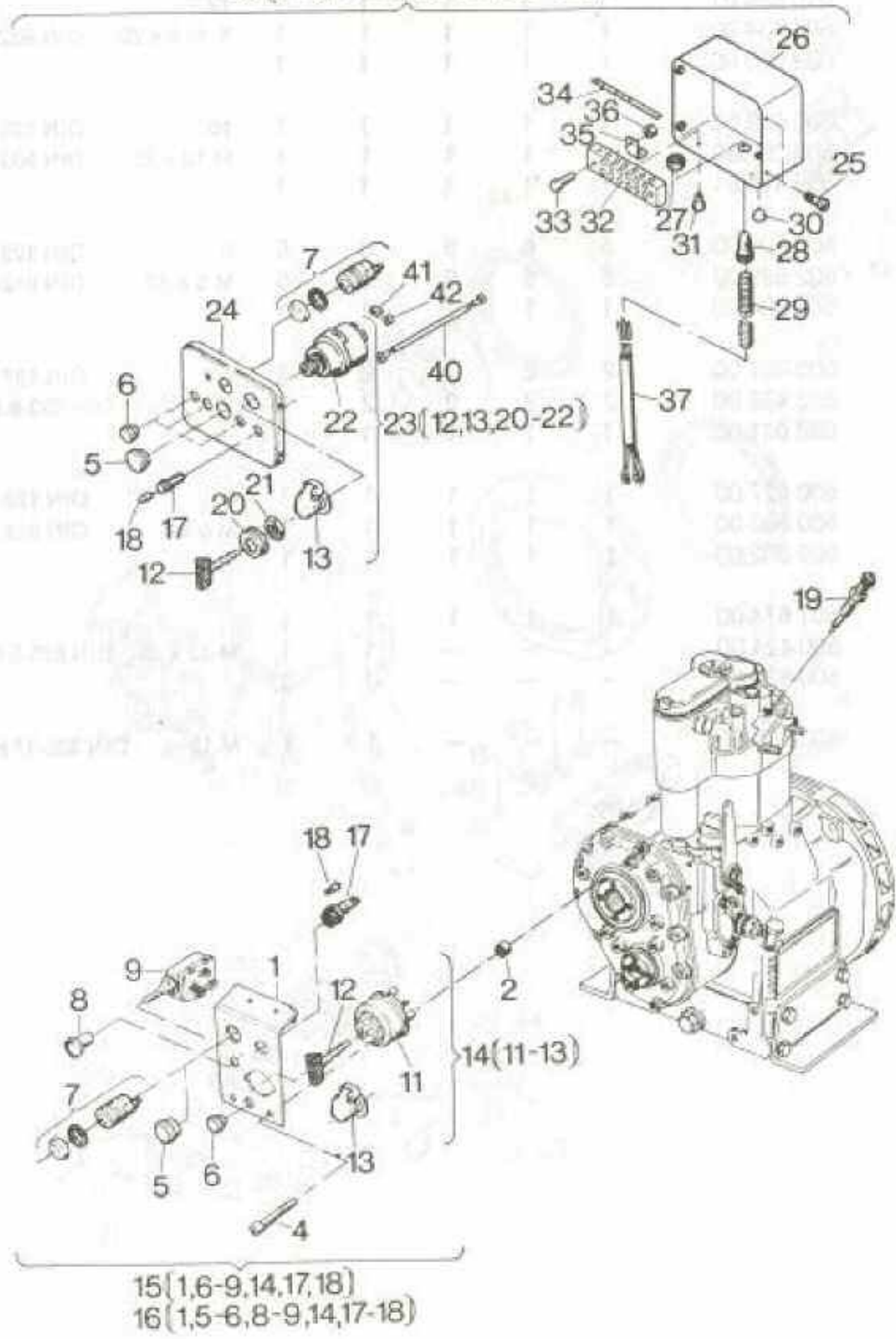
16	PARÇA NO.	MİKTAR					AÇIKLAMALAR	
		E 71	E 75	E 79	E 780	E 786		
26	030 123 01	—	—	2	—	—		
26	037 323 00	—	—	—	2	—		
27	—	—	—	—	—	—		
28	500 416 00	—	—	2	—	—	M 10 x 55	DIN 938 - 5.6
28	500 526 00	—	—	—	4	—	M 8 x 45	DIN 912 - 8.8
29	500 832 00	—	—	4	4	—	8 m 6 x 30	DIN7-St50k
30	500 029 00	—	—	4	2	2	10	DIN 128
31	500 304 00	—	—	2	2	2	M 10 x 90	DIN 931 - 8.8
32	—	—	—	—	—	—		
33	003 030 02	1	1	1	1	1		
34	010 196 00	1	1	1	1	1	77 mm	
34	010 197 00	1	1	1	1	1	122 mm	
34	010 200 00	1	1	1	1	1	242 mm	
34	010 487 00	1	1	1	1	1	320 mm	
35	010 189 00	1	1	1	1	1		
36	501 944 00	5	5	5	5	5	M 6 x 25	DIN 6912-8.8 A3C
37	—	—	—	—	—	—		
38	—	—	—	—	—	—		
39	038 184 00	1	1	1	1	1		
40	010 114 02	1	1	1	1	1		
41	501 958 00	1	1	1	1	1	10 x 16 x 1,0	DIN 988
42	038 130 00	1	1	1	1	1		
43	—	—	—	—	—	—		
44	501 942 00	1	1	1	1	1		
45	035 154 00	1	1	1	1	1		
46	010 278 01	1	1	1	1	1	„A“	
47	010 279 01	1	1	1	1	1	„B“	
48	010 113 00	1	1	1	1	1		
49	—	—	—	—	—	—		
50	501 691 00	1	1	1	1	1	19 x 1,8	DIN 769
51	501 992 00	1	1	1	1	1		
52	501 943 00	2	2	2	2	2	A 30 x 1,5 K	DIN 983
53	502 585 00	2	2	2	2	2		



E 71 | E 75 | E 79 | E 780 | E 786

		E 71	E 75	E 79	E 780	E 786		
1	032 044 10	—	—	—	1	1		
1	038 095 01	1	1	1	—	—		
2	003 115 00	—	—	—	—	1		
3	502 897 00	—	—	—	1	1	M 12 x 45	DIN 835-8.8 A3C
4	030 200 00	—	—	—	1	1		
5	400 005 00	—	—	—	1	1	12 V	
6	500 632 00	—	—	—	3	3	12	DIN 128 A3C
7	500 936 00	—	—	—	2	2	M 12	DIN 934-8 A3C
8	036 842 00	—	—	—	1	—		
9	500 318 00	—	—	—	2	—	M 12 x 70	DIN 931-8.8
10	400 266 00	—	—	—	1	1		
11	400 286 00	4	4	4	—	—	M 10	SSN 440-8Cu
12	501 459 00	4	4	4	—	—	10,5	DIN 125-St A3C
13	038 092 01	—	—	1	—	—		
14	030 141 00	—	—	1	—	—		
15	038 039 00	1	1	1	—	—		
16	501 453 00	2	2	2	—	—	M 10 x 65	DIN 835-8.8 A3C
17	038 090 00	1	1	1	—	—		
18	501 930 00	1	1	1	—	—	12 V	
19	500 617 00	2	2	2	—	—	A 10	DIN 137
20	500 235 00	2	2	2	—	—	M 10	DIN 934-8
21	400 270 00	4	4	—	—	—	M 10 x 65	
21	502 687 00	—	—	4	—	—	M 10 x 90	DIN 7991-8.8
22	038 484 01	—	—	—	1	1	„U“	
23	038 475 01	1	1	1	1	1		
24	502 620 00	2	2	2	—	—	10 x 10	DIN 7346
24	502 695 00	—	—	—	2	2	10 x 20	DIN 7346
25	500 028 00	4	4	4	4	4	8	DIN 128
26	500 521 00	4	4	4	4	4	M 8 x 35	DIN 912-8.8
26	500 523 00	4	4	4	4	4	M 8 x 35	DIN 912-8.8 „U“
27	038 562 01	1	1	1	1	1		
28	500 617 00	4	4	4	4	4	A 10	DIN 137
29	500 535 00	4	4	4	4	4	M 10x16	DIN 6912-8.8

38 (5-7,17-18,23-28,30-36)
 39 (5-6,17-18,23-28,30-36)



	PARÇA NO.	MİKTAR					AÇIKLAMALAR	
		E 71	E 75	E 79	E 780	E 786		
1	035 086 00	1	1	1	1	1		
2	032 004 00	2	2	2	2	2		
3	—	—	—	—	—	—		
4	502 488 00	2	2	2	2	2	M 8x60	DIN 912-8.8 A3C
4	501 209 00	—	—	—	2	2	„U“ M 8x85	DIN 912-8.8 A3C
5	400 914 00	1	1	1	1	1	24	
6	400 960 00	3	3	3	3	3	17	
7	400 109 00	1	1	1	1	—		
8	400 154 00	1	1	1	1	1		
9	400 095 00	1	1	1	1	1		
10	—	—	—	—	—	—		
11	—	—	—	—	—	—		
12	501 664 00	1	1	1	1	1		
13	490 509 00	1	1	1	1	1		
14	501 661 00	1	1	1	1	1		
15	007 100 01	1	1	1	1	—		
16	010 593 00	—	—	—	—	1		
17	501 765 00	1	1	1	1	1	BATT	
18	400 097 00	1	1	1	1	1	12 V	2 W
19	400 312 00	1	1	1	1	—		
20	—	—	—	—	—	—		
21	—	—	—	—	—	—		
22	—	—	—	—	—	—		
23	502 765 00	1	1	1	1	1		
24	035 092 11	1	1	1	1	1		
25	501 383 00	4	4	4	4	4	M 6 x 10	DIN 7985-8.8 Zn
26	007 163 10	1	1	1	1	1		
27	501 591 00	1	1	1	1	1		
28	501 590 10	1	1	1	1	1		
29	—	—	—	—	—	—		
30	501 608 00	2	2	2	2	2		
31	500 493 00	2	2	2	2	2	M 5 x 10	DIN 7985-4.8
32	501 607 00	1	1	1	1	1		

18

PARÇA NO.

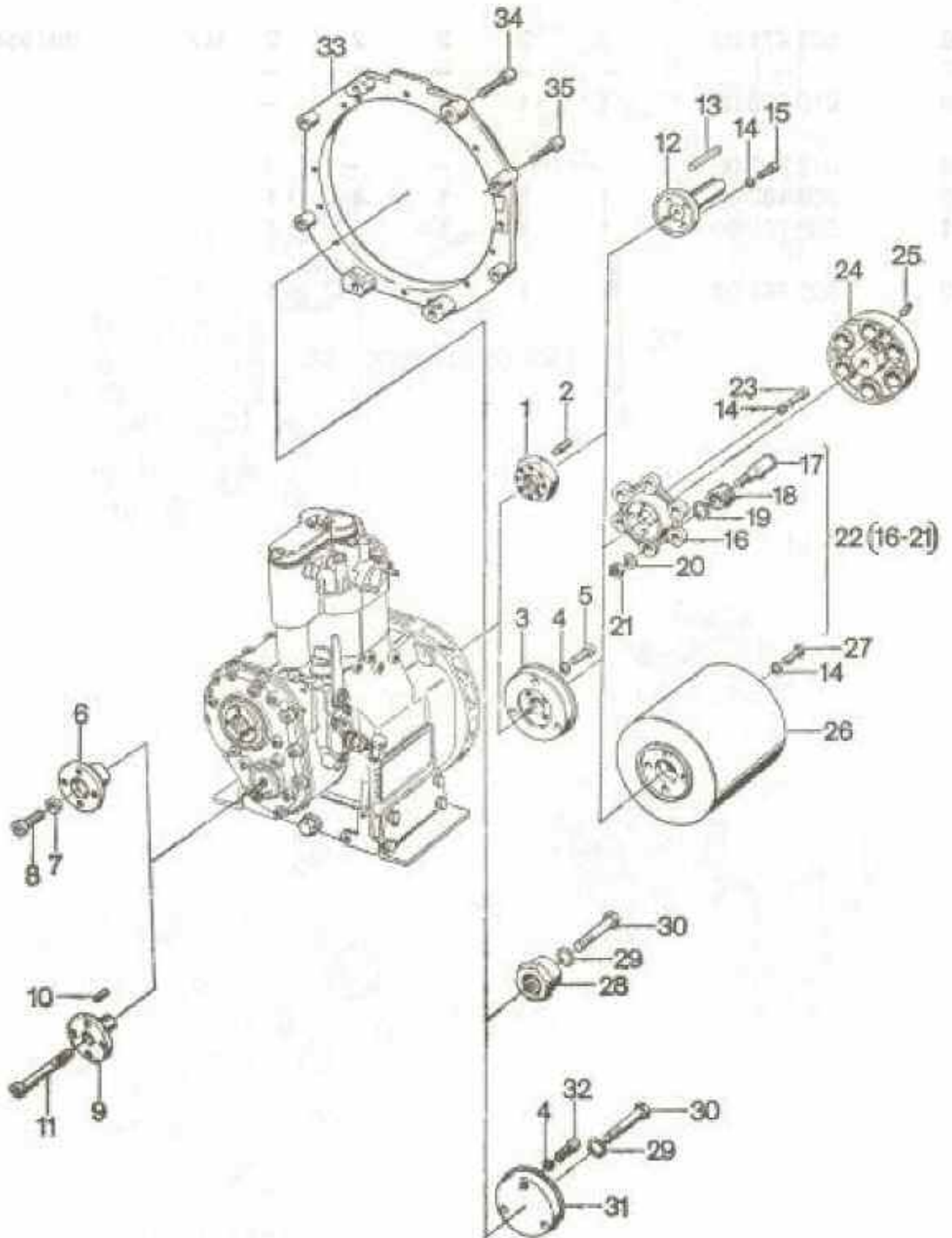
MİKTAR

AÇIKLAMALAR

E 71 | E 75 | E 79 | E 780 | E 786

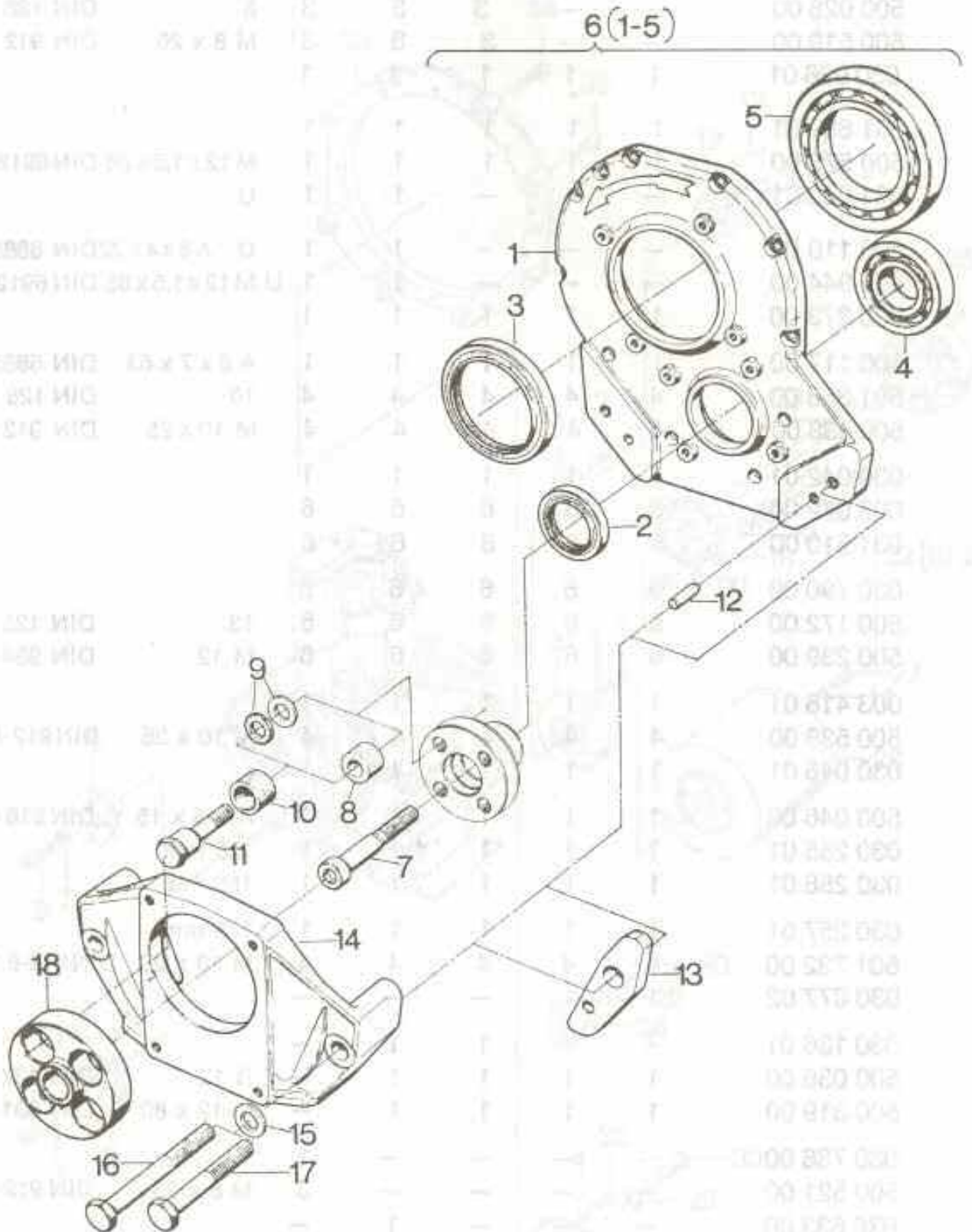
33	501 588 00	2	2	2	2	2	M 4 x 20	DIN 84-4.8 A3C
34	038 862 00	1	1	1	1	1		
35	036 667 00	2	2	2	2	2		
36	501 471 00	2	2	2	2	2	M 4	DIN 934-8 A3C
37	-	-	-	-	-	-		
38	010 920 00	1	1	1	1	-		
39	010 961 00	-	-	-	-	1		
40	008 182 02	1	1	1	1	1		
41	502 766 00	1	1	1	1	1		
42	502 767 00	1	1	1	1	1		

TABLO NO. 19 ELASTİK KAPLIN, GÜÇ ÇIKIŞ MILİ



E 71 | E 75 | E 79 | E780 | E.786

	PARÇA NO.	E 71	E 75	E 79	E780	E.786		
1	030 114 00	1	1	—	—	—		
2	500 051 00	1	1	—	—	—	AM 10 x 25	DIN 915-45 H
3	030 175 00	—	—	1	1	1		
4	500 028 00	—	—	3	3	3	8	DIN 128
5	500 519 00	—	—	3	3	3	M 8 x 20	DIN 912 - 8.8
6	030 026 01	1	1	1	1	1		
7	031 699 01	1	1	1	1	1		
8	500 576 00	1	1	1	1	1	M12x1,5x28	DIN 6912-10.9
9	031 003 01	—	—	—	1	1	U	
10	500 110 00	—	—	—	1	1	U A6x4x22	DIN 6885
11	400 944 00	—	—	—	1	1	U M12x1,5x65	DIN 6912-10.9
12	030 273 00	1	1	1	1	1		
13	500 117 00	1	1	1	1	1	A 8 x 7 x 63	DIN 6885
14	501 356 00	4	4	4	4	4	10	DIN 128 A3C
15	500 538 00	4	4	4	4	4	M 10 x 25	DIN 912 - 8.8
16	030 042 01	1	1	1	1	1		
17	003 072 00	6	6	6	6	6		
18	031 510 00	6	6	6	6	6		
19	030 790 00	6	6	6	6	6		
20	500 172 00	6	6	6	6	6	13	DIN 125 - St
21	500 239 00	6	6	6	6	6	M 12	DIN 934 - 8
22	003 418 01	1	1	1	1	1		
23	500 538 00	4	4	4	4	4	M 10 x 25	DIN 912-8.8 Zn
24	030 046 01	1	1	1	1	1		
25	500 046 00	1	1	1	1	1	AM 8 x 15	DIN 916-45 H
26	030 255 01	1	1	1	1	1	125 mm	
26	030 256 01	1	1	1	1	1	150 mm	
26	030 257 01	1	1	1	1	1	175 mm	
27	501 732 00	4	4	4	4	4	M 10 x 20	DIN 912-8.8 A3C
28	030 077 02	1	1	—	—	—		
28	030 136 01	—	—	1	1	—		
29	500 036 00	1	1	1	1	—	B 12	DIN 137
30	500 319 00	1	1	1	1	—	M 12 x 80	DIN 931-8.8
31	030 786 00	—	—	—	—	1		
32	500 521 00	—	—	—	—	3	M 8 x 25	DIN 912-8.8
33	036 633 00	—	—	—	1	—		
34	500 546 00	—	—	—	4	—	M 10 x 40	DIN 912-8.8
35	500 525 00	—	—	—	4	—	M 8 x 40	DIN 912-8.8



Part No.	Part Name	Material	Quantity
1	Housing	Cast Steel	1
2	Cover Cap	Cast Steel	1
3	Gasket	Steel	1
4	Bearing Assembly	Steel	1
5	Inner Bearing	Steel	1
6	Outer Bearing	Steel	1
7	Shaft	Steel	1
8	Support Bracket	Steel	1
9	Support Pin	Steel	1
10	Drive Pulley	Steel	1
11	Driven Pulley	Steel	1
12	Drive Pulley	Steel	1
13	Drive Pulley	Steel	1
14	Drive Pulley	Steel	1
15	Drive Pulley	Steel	1
16	Drive Pulley	Steel	1
17	Drive Pulley	Steel	1
18	Drive Pulley	Steel	1

	PARÇA NO.	MİKTAR					AÇIKLAMALAR
		E 71	E 75	E 79	E 780	E 786	
1	—	—	—	—	—	—	
2	400 338 00	1	1	1	1	1	
3	400 347 00	1	1	1	1	1	
4	500 130 00	1	1	1	1	1	
5	500 155 00	1	1	1	1	1	
6	004 463 00	1	1	1	1	1	
7	400 944 00	—	—	—	1	1	U M12x1,5x65 DIN6912-10.9
8	031 053 00	4	4	4	4	4	
9	500 169 00	8	8	8	8	8	B 10,5 DIN 125 - St
9	500 169 00	4	4	4	4	4	B 10,5 DIN 125 - St
9	500 170 00	12	12	12	12	12	10,5 DIN 433 - St
10	031 773 00	4	4	4	4	4	
11	030 072 00	4	4	4	4	4	
12	031 693 00	2	2	2	2	2	
12	500 585 00	—	—	—	2	2	U 8 M 6 x 36 DIN7-9S20 k
13	031 012 00	—	—	—	2	2	U
14	030 031 00	1	1	1	1	1	
15	500 172 00	2	2	2	2	2	13 DIN 125 - St
16	500 319 00	—	—	—	2	2	U M 12x80 DIN 931 - 8.8
17	500 318 00	2	2	2	2	2	M 12 x 70 DIN 931 - 8.8
18	030 067 00	1	1	1	1	1	



PANCAR MOTOR SANAYİ ve TİCARET A.Ş.

Eski Edirne asfaltı, Kartaltepe Mah. No: 33 Bayrampaşa/İSTANBUL

Tel. (1) 545 46 50 (10 Hat) Tlx. 30067 Pamo tr.

Fax. (1) 578 03 41 Tlg. PANCAR MOTOR