


**M M T I E**  
**M O B I L E**  
**B O A T H O I S T S**  
**C A P A C I T I E S**  
**F R O M 1 5 T O N**  
**T O 5 0 0 T O N .**  
**M A R I N E**  
**M  E**  
**T R A V E L I F T**



**\*MODEL 15BFM —**

**To handle boats to 45' with beams to 15'**

Maximum lifting capacity	30,000 lbs.	13,608kg
Inside turning radius (wheel at 90°)	0°	0m
Outside turning radius	26°0"	7.92m
Overall height	18°0"	5.48m
Inside clear height (under front beam)	16°0"	4.87m
Overall width	20°0"	6.09m
Inside clear width	15°0"	4.57m

**\*MODEL 25BFM —**

**To handle boats to 52' with beams to 16'**

Maximum lifting capacity	50,000 lbs.	22,680kg
Inside turning radius (wheel at 90°)	0°	0m
Outside turning radius	28°0"	8.53m
Overall height	20°0"	6.09m
Inside clear height (under front beam)	18°0"	5.48m
Overall width	22°0"	6.70m
Inside clear width	17°0"	5.18m

\*4-Wheel Drive Available



### \*MODEL 35BFM —

To handle boats to 57' with beams to 16'

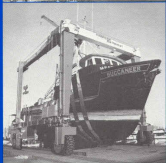
Maximum lifting capacity	70,000 lbs.	31,752kg
Inside turning radius (wheel at 90°)	0'	0m
Outside turning radius	30'0"	9.14m
Overall height	20'0"	6.09m
Inside clear height (under front beam)	18'0"	5.48m
Overall width	22'0"	6.70m
Inside clear width	17'0"	5.18m

\* 4-Wheel Drive Available.

### MODEL 60BFM —

To handle boats to 70' with beams to 20'

Maximum lifting capacity	120,000 lbs.	54,432kg
Inside turning radius (wheel at 90°)	0'	0m
Outside turning radius	30'0"	9.14m
Overall height	23'6"	7.16m
Inside clear height (under front beam)	21'0"	6.40m
Overall width	25'0"	7.62m
Inside clear width	20'0"	6.09m



### MODEL 70BFM —

To handle boats to 70' with beams to 20'

Maximum lifting capacity	140,000 lbs.	63,504kg
Inside turning radius (wheel at 90°)	0"	0m
Outside turning radius	34'0"	10.36m
Overall height	24'6"	7.47m
Inside clear height (under front beam)	22'0"	6.7m
Overall width	26'4"	8.03m
Inside clear width	21'0"	6.4m

### MODEL 100BFM —

To handle boats to 105' with beams to 25'

Maximum lifting capacity	200,000 lbs.	90,720kg
Inside turning radius (wheel at 90°)	0"	0m
Outside turning radius	50'0"	15.24m
Overall height	30'11"	9.42m
Inside clear height (under front beam)	28'0"	8.53m
Overall width	33'6"	10.21m
Inside clear width	25'0"	7.62m



### MODEL 150AMO —

To handle boats to 105' with beams to 30'

Maximum lifting capacity	300,000 lbs.	136,080kg
Inside turning radius (wheel at 90°)	0'	0m
Outside turning radius	52'0"	18.85m
Overall height	33'0"	10.06m
Inside clear height (under front beam)	30'0"	9.14m
Overall width	38'0"	11.58m
Inside clear width	28'0"	8.53m

### MODEL 250AMO —

To handle boats to 150' with beams to 30'

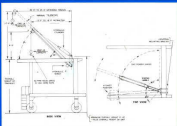
Maximum lifting capacity	500,000 lbs.	226,800kg
Inside turning radius (wheel at 90°)	0'	0m
Outside turning radius	65'0"	19.81m
Overall height	39'0"	11.88m
Inside clear height (under front beam)	34'0"	10.36m
Overall width	45'0"	13.71m
Inside clear width	32'0"	9.75m



### MODEL 500BFM —

To handle boats to 170' with beams to 38'

Maximum lifting capacity	1,000,000 lbs.	453,600kg
Inside turning radius (wheel at 90°)	30'0"	9.14m
Outside turning radius	91'0"	27.74m
Overall height	48'0"	14.63m
Inside clear height (under front beam)	40'0"	12.19m
Inside clear width	38'0"	11.58m



### JIB CRANE ATTACHMENT

Marine Travelift Jib Crane Attachment provides auxiliary hoisting capability for in-place handling of masts, engines and other heavyweight components. Facilitates service and repair work. For installation on top cross-beam member of all open end Marine Travelift hoists.

3 Models available (all 2500 lb. capacity)

325 — Manual telescope

335 — Hydraulic telescope

350 — Hydraulic telescope with special electric motoring valve

### BOAT YARD TRAILERS

15 ton capacity Model 300 shown. 12 ton capacity Model 240 also available. Special heavy duty design reduces overhead clearance storage problems, speeds handling, conserves storage space.

	MODEL 240	MODEL 300
Rated Capacity	12 tons-10,890kg	15 tons-13,614kg
Overall height	31"-788mm	31"-788mm
Overall length	29'0"-8.84m	31'0"-9.44m
Overall width	13'8"-4.16m	14'8"-4.47m
Tires (Main — New recap)	31x11.50-16	31x11.50-16
Doily — 14" dia. dual steel wheels with 5" molded on, solid rubber face.		

Note: Model 240 has single set of main wheels —  
Model 300 has tandem wheel arrangement



Marine Travelift  
Boat Handling Specialists

**AKPULAT TİCARET**

35. Sokak No. 44/1 Bahçelievler - ANKARA  
Tel : 222 16 06 - 213 75 34 Tlx : 43474 Akpa Tr.

**MARINE**  **TRAVELIFT** inc.

49 E. Yew St., Sturgeon Bay, WI 54235  
• 414-743-6202 • Telex: TRAVELIFT STGB  
260056 • FAX: 414-743-1522.